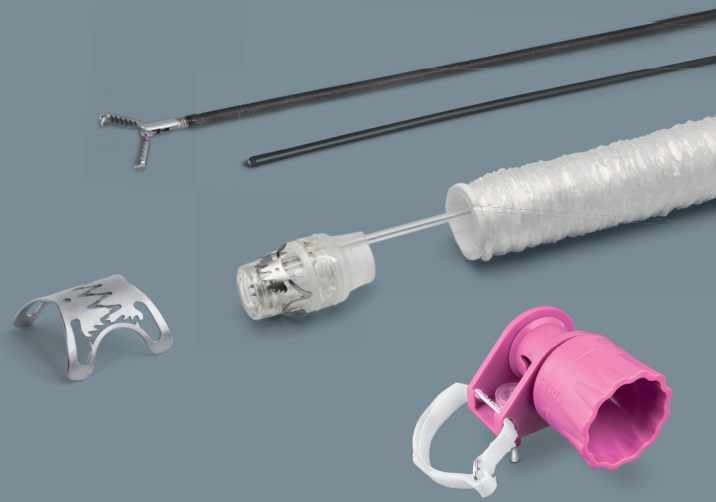




ovesco
innovation in scope



FTRD[®] System.....

Full-Thickness Resection Device for flexible endoscopy



The FTRD® System enables endoscopic full-thickness resection (EFTR) of lesions and diagnostic tissue acquisition in the colon and rectum (colonic FTRD®/diagnostic FTRD®) respectively in the stomach and duodenum (gastroduodenal FTRD®). It offers:

- Transluminal and minimally invasive technique
- Enhancing the spectrum of resection techniques¹
- Improving histological diagnosis²
- Complete set for endoscopic full-thickness resection procedure

..... FTRD® System

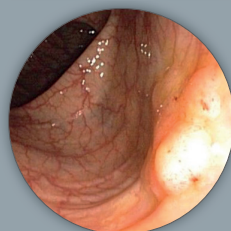
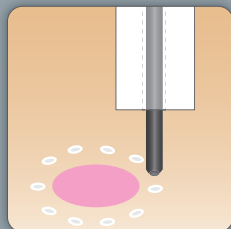
Full-Thickness Resection Device for flexible endoscopy

It is based on the well-established OTSC® System and enables the removal of suitable lesions with all layers of the wall including the serosa. The design of the FTRD® System ensures that the transection of the organ wall occurs only after the target site has been safely closed. The organ lumen is therefore never opened during the procedure.

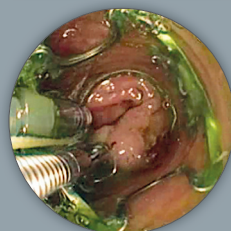
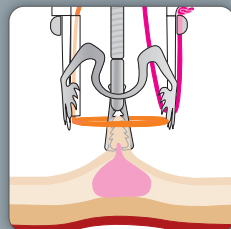
The FTRD® application cap is mounted on the tip of the endoscope with the snare running along the outside of the endoscope protected by the endoscope sleeve. By turning the hand wheel the thread is tensioned and the clip released. Subsequently, the tissue above the clip is resected with the integrated HF snare.

..... Application

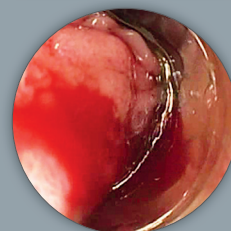
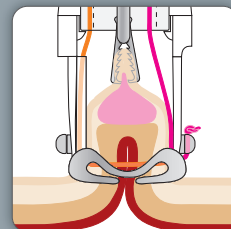
Endoscopic full-thickness resection



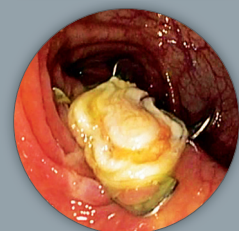
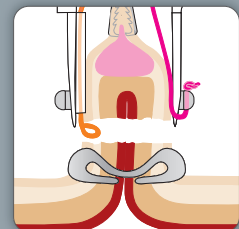
Marking the lesion with the FTRD® Marking Probe.



Grasping and mobilizing the lesion with the FTRD® Grasper.



Ensuring that the tissue is completely within the FTRD® application cap – releasing clip with hand wheel.



Closing snare and resecting tissue, retrieving specimen and inspecting resection site.

Broad-based recurrent adenoma (non-lifting) in the descending colon, source: Prof. K. Caca, Klinikum Ludwigsburg, Germany

¹ Schmidt A, Beyna T, Schumacher B, Meining A, Richter-Schrag HJ, Messmann H, et al. Colonoscopic full-thickness resection using an over-the-scope device: a prospective multicentre study in various indications. *Gut* 2018 Jul;67(7):1280-1289.

² Meier B, Stritzke B, Kuellmer A, et al. Efficacy and safety of endoscopic full-thickness resection in the colorectum: Results from the German colonic FTRD® registry. *Am J Gastroenterol* 2020; 115(12):1998-2006.



FTRD®

GASTRODUODENAL

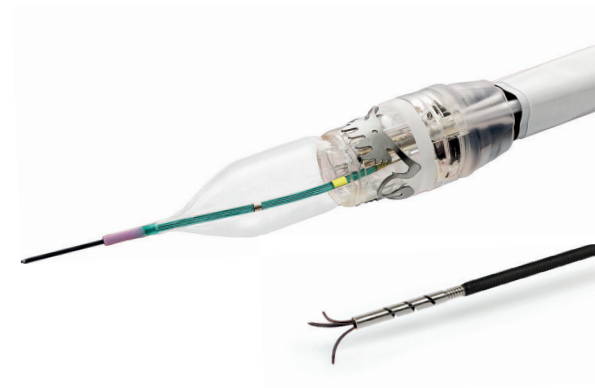
The gastroduodenal FTRD® is a smaller FTRD® System for endoscopic full-thickness respectively deep partial-wall resection (especially in the stomach) and diagnostic tissue acquisition in the stomach and duodenum.

For an easier and safer insertion of the system into the upper GI tract (esophageal/pyloric passage) the gastroduodenal FTRD® Set is delivered with an insertion balloon and guide wire. The clip of the gastroduodenal FTRD® has been modified especially for the application in the duodenum and stomach.

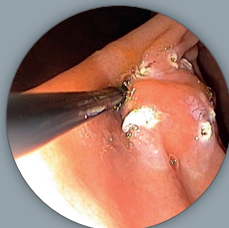
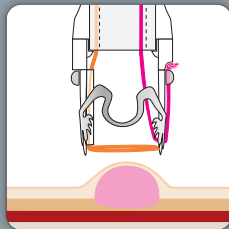
The gastroduodenal FTRD® can find application in:

- not pretreated non-lifting adenoma
- non-lifting recurrent adenoma
- small subepithelial tumors
- early carcinoma

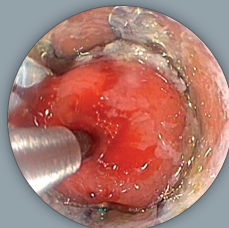
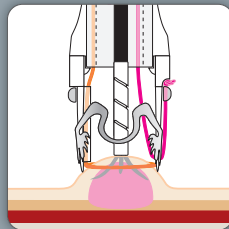
For submucosal lesions (especially for GIST indications) the utilization of the Anchor instead of the Grasper can represent a good alternative.



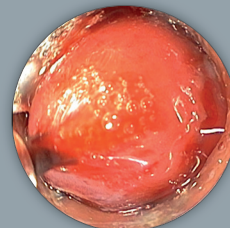
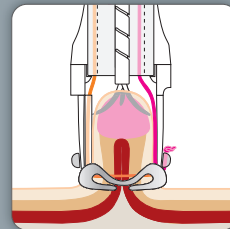
Endoscopic full-thickness resection in the stomach



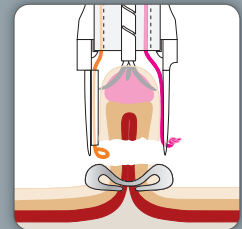
Marking and targeting the lesion with the FTRD®.



Grasping and mobilizing the lesion with the Anchor.



Clip application and subsequent resection of the tissue.



2 cm full-thickness specimen from the stomach.

The diagnostic FTRD® is a smaller FTRD® System for full-thickness biopsy in the colon and rectum e.g. for diagnostic purposes.

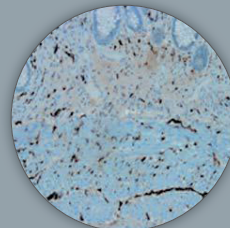
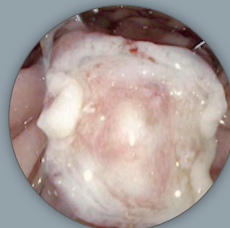
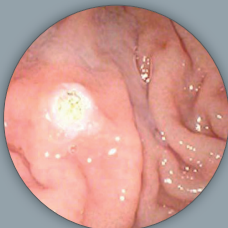
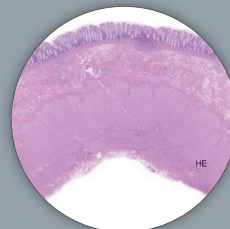
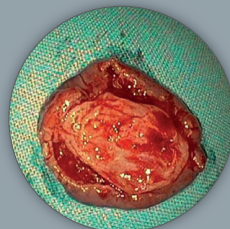
It enables histology in functional diseases in the colonic wall e.g. for neuro-gastroenterological examination. Full-thickness biopsies allow accurate histological presentation of enteric neurons and can provide important insights into the diagnosis of motility disorders.

Full-thickness biopsy finds application in:

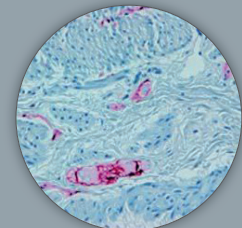
- Hypo- and aganglionosis (e.g. Hirschsprung's disease)
- Enteric ganglionitis
- Visceral neuro- and myopathy (e.g. in chronic constipation)
- Gastrointestinal amyloidosis
- Enteric manifestation or neurological diseases (e.g. Parkinson's disease)



Diagnostic full-thickness biopsy in the colon



Calretinin



S100

Upper row: Diagnostic EFTR to exclude a primary neurodegenerative motility disorder.¹

Lower row: EFTR for diagnosis of Hirschsprung's disease.²

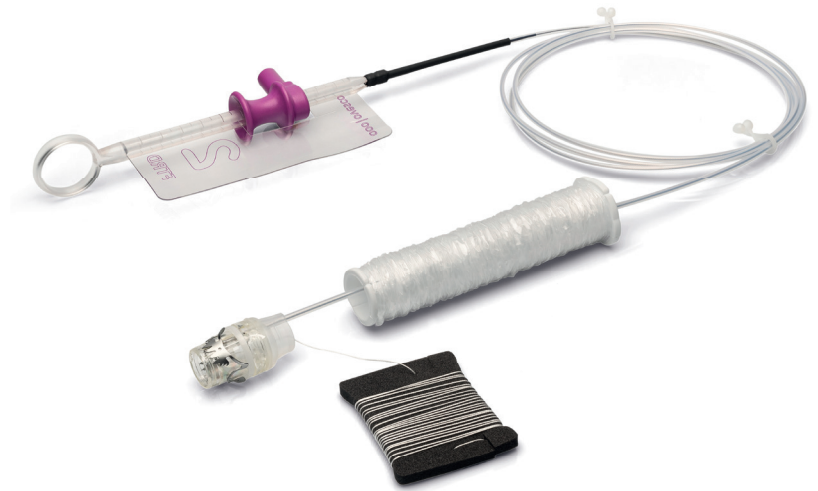
1 Source: Prof. P. Bauerfeind, Stadtspital Triemli, Zürich, Switzerland

2 Source: Dr. A. Martínez-Alcalá, Centro de Innovaciones Digestivas Martínez-Alcalá, Sevilla, Spain

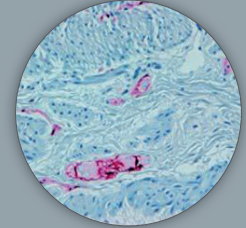
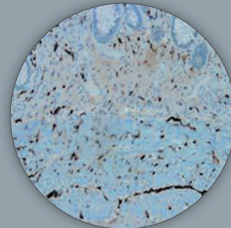
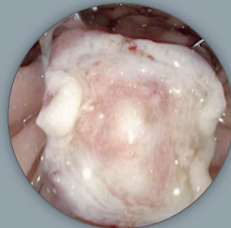
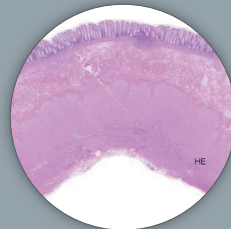
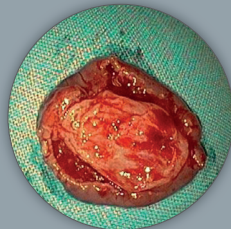
The colonic FTRD® is an instrument for flexible endoscopy for full-thickness resection and diagnostic tissue acquisition through resection of suitable lesions in the colon and rectum.

The colonic FTRD® can find application in:

- not pretreated non-lifting adenoma
- non-lifting recurrent adenoma
- adenoma at the base of the appendix
- adenoma at/in diverticula
- small subepithelial tumors
- early carcinoma



Endoscopic full-thickness resection in the colon



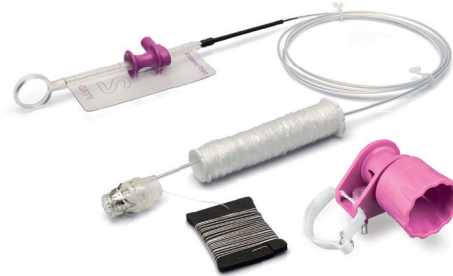
Upper row: De novo resection after incomplete polypectomy in the descending colon (early carcinoma).
Lower row: Resection of a recurrent adenoma (HGIEN) in the descending colon (non-lifting sign).

FTRD® System

Details and components

The respective FTRD® Sets (colonic, diagnostic, gastroduodenal) are delivered as procedural set and consist of the following products:

- FTRD® cap with preloaded clip and thread
- snare integrated into the distal end of the cap
- FTRD® hand wheel
- thread retriever
- endoscope sleeve with fixation tapes
- FTRD® Marking Probe
- FTRD® Grasper
- insertion balloon (only gastroduodenal FTRD®)
- guide wire (only gastroduodenal FTRD®)



FTRD® MARKING PROBE



HF coagulation probe for marking the target lesion before using the FTRD® System. Marking will facilitate both finding the lesion and verify complete resection of the target tissue.

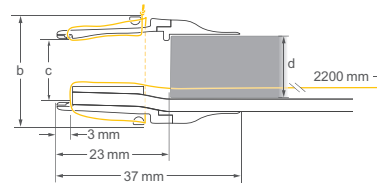
FTRD® GRASPER



Grasping forceps for proper grip on the target tissue and precise retrieval of the sample into the FTRD® application cap. The FTRD® Grasper is also available separately (5 items per package, ref. no. 200.73).

FTRD® versions

FTRD® versions	colonic	diagnostic	gastroduodenal
Ref. no.	200.70	200.76	200.72
Endoscope Ø (c) [mm]	11.5 – 13.2	10.5 – 12.0	10.5 – 12.0
Cap outer Ø (a) [mm]	21	19.5	19.5
Cap inner Ø (b) [mm]	13	12.1	12.1
Required working channel Ø [mm]	3.2	3.2	3.7



Application aid

FTRD® prOVE CAP



The FTRD® prOVE Cap is a cap with the same dimensions as the cap of the respective FTRD Set in order to test the possible application of the FTRD® Set in advance. The FTRD® prOVE Cap is not included in the respective FTRD® Set. (2 items/package; colonic FTRD® prOVE Cap ref.no. 200.71; gastroduodenal FTRD® prOVE Cap ref.no. 200.77).

OTSC® ANCHOR



For a better mobilization of tissue in submucosal findings (especially in the stomach) the OTSC® Anchor 220tt can offer an alternative (not included in the FTRD® Set).

Ovesco Endoscopy AG
Friedrich-Miescher-Strasse 9
72076 Tuebingen
Germany

Phone +49(0)7071 96528-160
Fax +49(0)7071 96528-260
E-Mail service@ovesco.com

Ovesco Endoscopy USA Inc.
15300 Weston Parkway
Suite 101
Cary, NC 27513,
USA

Phone +1 919 651 9449
Fax +1 408 608 2077
customerservice@ovesco-usa.com

Scan here for more product information.



Ovesco Endoscopy AG is a medical device company specialising in the fields of flexible endoscopy, endoluminal surgery and telemetric diagnostics. The company develops, manufactures and markets innovative products for the detection and treatment of gastrointestinal disease. Ovesco products are synonymous with efficacy and efficient application.

www.ovesco.com

USA version 9 | 2022-09-21