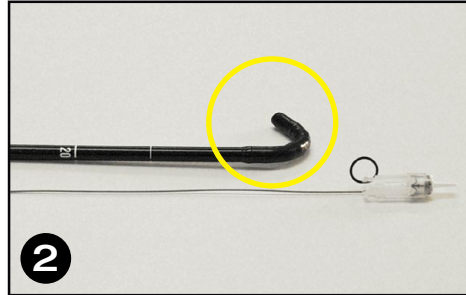


**C910001, C913131**

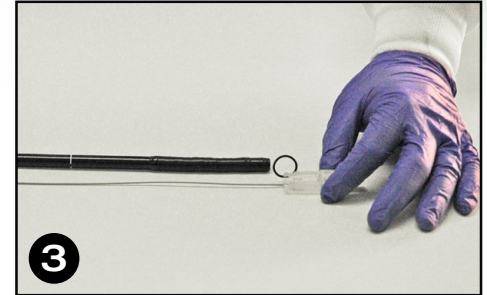
# Padlock Clip™ defect closure system



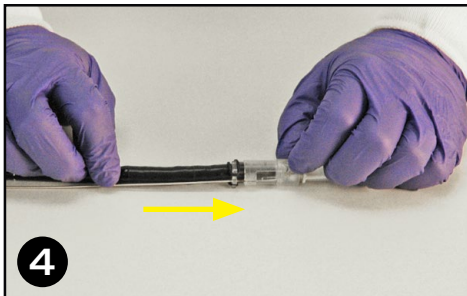
**1**  
Lay endoscope flat on surface and place Padlock Clip™ system housing next to distal end of scope.



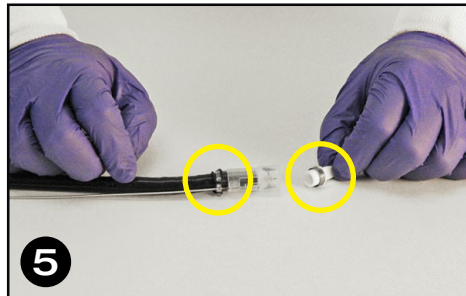
**2**  
Identify the full retroflexion direction of the endoscope. Position the curve as shown.



**3**  
Position cable along the OUTSIDE of the retroflexion curve.



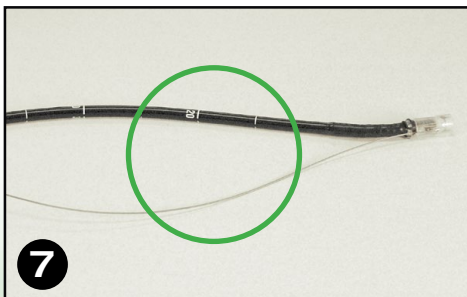
**4**  
Gently slide the endoscope into the housing until it stops. DO NOT push or twist the scope into the housing beyond a gentle stop.



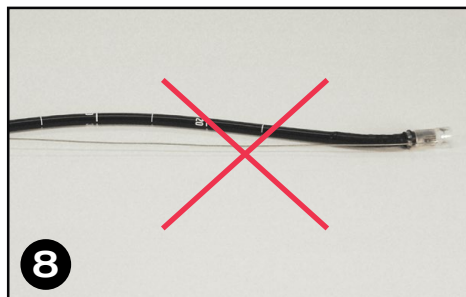
**5**  
Grasp the black O-ring and stretch and wrap across the opening. Secure it on the open hook. Grasp the safety cap. Twist and pull to remove.



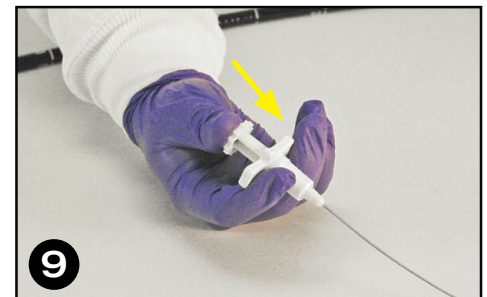
**6**  
Apply lubricant liberally to the outside of the clip housing.



**7**  
Allow the cable to advance loosely without tension as the endoscope is inserted.



**8**  
An example of the cable being held TOO tense and tight.



**9**  
The Padlock Clip™ system is deployed by a FIRM RAPID thumb push on the handle.

**This information is to be used as a reference guide only. Review the instructions for use prior to using the device.**

US Endoscopy is a subsidiary of STERIS Corporation.

Listening...and delivering solutions®, the US Endoscopy listening...and delivering solutions design, and all marks denoted with ® or ™ are registered with the U.S. Patent and Trademark Office, or trademarks owned by US Endoscopy

Copyright© 2017 US Endoscopy and affiliates. All rights reserved.