

**2024**

# **New and Featured Products**



From diagnosis and treatment to infection prevention, we partner with our Clinicians to advance patient care throughout the GI Endoscopy procedure.

Our devices and equipment offer evidence-based options to address various GI conditions, and disposable products to support infection prevention – we provide trusted offerings to improve clinical outcomes and procedural efficiencies..

**Check out our latest offerings...**





SCAN to  
Learn More

# ADDRESSING CLINICAL CHALLENGES

## SMARTBAND™ Multi-Band Ligation System

The **SMARTBAND Multi-Band Ligation System** is used to endoscopically ligate esophageal varices at or above the gastroesophageal junction and to ligate internal hemorrhoids.

- » “Tire tread” band design enables maximum tissue compression and gripping force<sup>1</sup>
- » Two options: the SLK6 made with latex, and the SLK6LF, which is not made with natural rubber latex
- » Manufactured and packaged for 24-month shelf life<sup>1</sup>



Bands deployed in live porcine model

Features a universal connector that attaches the handle to the endoscope and is compatible with multiple endoscope styles

Offers a 10FR inner diameter handle stem that enhances suction capabilities

Includes 6 backloaded bands on a clear, smooth barrel for visualization



1. Testing data is on file

# ACHIEVE HEMOSTASIS



SCAN to  
Learn More

## CARR-LOCKE Injection Needle

Designed to operate in tortuous conditions, the **CARR-LOCKE Needle** is intended for injection therapy of esophageal/gastric strictures, varices, and for endoscopic mucosal resection.

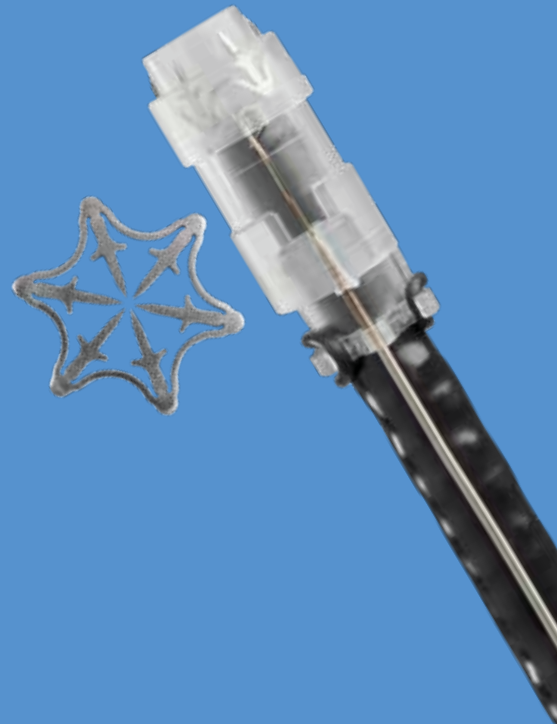
- » Stainless steel, spring sheath to help minimize kinking
- » Ultra smooth distal hub is gentle on friable tissue, aids in tamponade and reduces the risk of sheath perforations
- » Spring-loaded handle automatically retracts the needle



## PADLOCK CLIP™ Defect Closure System

The over-the-scope **PADLOCK CLIP Defect Closure System** is effective in “difficult” scenarios<sup>1</sup> – 6 prongs gather, lift, and approximate tissue offering full circumferential closure.

- » Full circumferential design for applications including hemostasis and closure of polyp resection sites <1.5cm and GI tract luminal perforations <2cm
- » Provides an open and free instrument channel for unhindered endoscope suction
- » Allows for “push of the thumb” deployment



# CONSISTENT PERFORMANCE



SCAN to  
Learn More

## ROTH NET™ Retriever – Select

The **ROTH NET Retriever - Select** offers the trusted security of a net that fully encompasses foreign bodies or tissue specimens from the gastrointestinal tract.

- » Reinforced net weave design provides durability and strength
- » Netting allows for visibility throughout the procedure

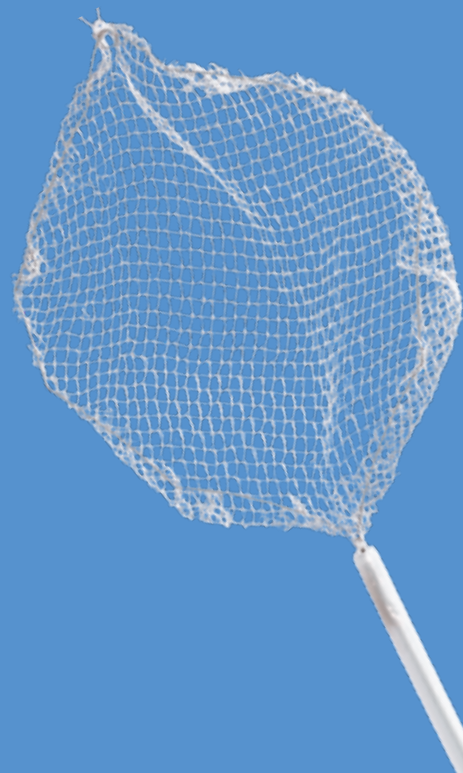
Offers consistent performance even in retroflexed or torturous positions



## ROTH NET™ Platinum™ Retriever – Universal

The **Roth Net Platinum Retriever - Universal** is a large capacity net with a stiff octagonal snare that can address a variety of retrieval needs such as retrieving heavy coins or large polyps and food impactions.

- » Ergonomic retrieval net with a flat wire design opens to maximum capacity while maintaining its form within the lumen
- » Monofilament stiff wire helps to get around food boluses in the esophagus or to collect blunt foreign bodies in the stomach



# RESECT AND COLLECT



SCAN to  
Learn More

## COINTIP™ Snare

Not all snares offer the same recruitment, resection, and performance. The innovative **COINTIP Snare** supports hot and cold resection with design features and leverages the benefits of different snare sizes to support precise cutting capabilities.

- » Distal tip flattened to 0.25mm which is achieved by the manufacturing process of “coining”
- » Double catheter that includes an internal strain relief for added support to reduce the chance of buckling during resection



Clean resection site with  
the COINTIP™ Snare\*

## ETRAP™ Polyp Trap

Inspired by input from nurses, the **ETRAP Polyp Trap** allows for retrieval of multiple specimens, while safeguarding clinicians from unnecessary exposure to biomaterial.

- » Removable specimen strainers provide little or no biomaterial exposure
- » Collect multiple polyps with uninterrupted suction
- » Simple transport and preservation of specimen



SCAN to  
Learn More



# COMPLETE RESECTION

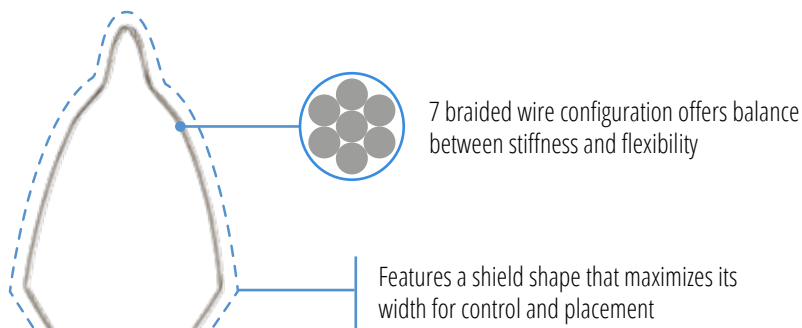


SCAN to  
Learn More

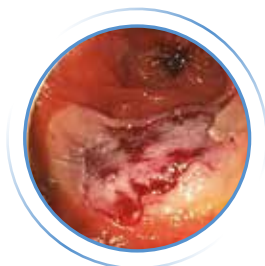
## EXACTO™ Cold Snare

As a dedicated cold snare, the **EXACTO Cold Snare** is clinically proven to achieve a significantly higher rate of complete resection when using the cold snare polypectomy technique.<sup>1,2</sup> The design offers control and placement for a precise, clean cut when compared to traditional braided snares.

- » 9mm mini snare size that facilitates polyp tissue resection without use of cautery
- » Enables a clean cut with a thin wire design (0.012"/0.30mm) while maintaining its shape and stiffness
- » Offers a thin, stiff catheter that decreases buckling while aiding in placement



Resection of peri-appendiceal lateral spreading tumor showing tubular adenoma



Clean margins after resection of 40x20mm tumor showing tubulovillous adenoma with focal high grade dysplasia



1. Horiuchi A, Hosoi K. "Perspective, randomized comparison of 2 methods of cold snare polypectomy for small colorectal polyps." *Gastrointestinal Endoscopy* (2015): 1-7  
2. Din S, Ball A. "Cold snare polypectomy: Does snare type influence outcomes?" *Digestive Endoscopy* (2015): 1-6



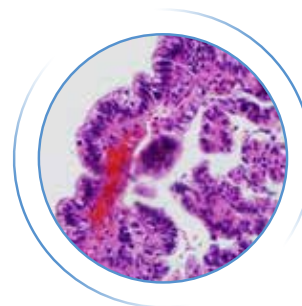
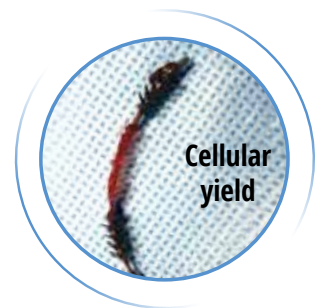
SCAN to  
Learn More

## MULTI-MODALITY SAMPLING

### **HISTOGUIDE™ Wire-Guided Forceps and INFINITY™ ERCP Sampling Device**

Multi-modality sampling approach may lead to increased sensitivity during ERCP procedures to aid in more accurate diagnosis.<sup>1</sup>

- » The HISTOGUIDE Wire-Guided Forceps' provides access and control, in acquiring a substantial amount of tissue
- » The INFINITY ERCP Sampling Device is purpose-built for collecting substantial samples from strictures in the biliary duct and has been proven to increase a diagnostic sensitivity up to 85%<sup>2</sup>



1. Korc, P and Sherman, S. "ERCP tissue sampling." GIE Journal 2016; 84 (4):L557-571.

2. T.Barrioz, M Wangermex, P. Levillain, M. Beauchant. The INFINITY™ brush improves the results of brush cytology for malignant biliary strictures. Societe Nationale Francaise de Gastro-Energie (SNFGE). [25-4-2013 10:13:01]



# RELIABLE SAMPLING



SCAN to  
Learn More

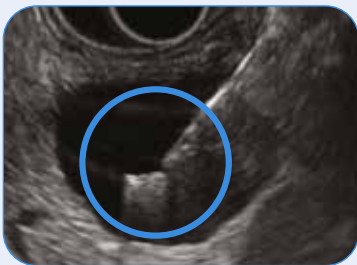
## MORAY™ Micro Forceps

The **Moray Micro Forceps** is designed to acquire reliable tissue samples from pancreatic cysts. <sup>1</sup>

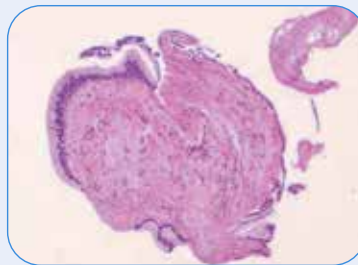
- » Fits through most 19G FNA needles
- » Serrated jaws with a 4.3mm opening allows tissue recruitment
- » Flexible stainless-steel coiled spring sheath

### Helping to lead to a more definitive diagnosis:

Samples collected with the MORAY Micro Forceps provided a diagnosis in 75% of patients vs. cytology, which provided a diagnosis in 15.9% of patients. <sup>1</sup>



EUS view of MORAY™ Micro Forceps tissue acquisition<sup>3</sup>



Microscopic view of mucinous epithelium<sup>3</sup>

1. Study data on file at STERIS  
2. DiMaio, Christopher, MD, et al. Impact of EUS-guided micro forceps biopsy sampling and needle-based confocal laser endomicroscopy on the diagnostic yield and clinical management of pancreatic cystic lesions. *Gastrointestinal Endoscopy*. Volume 91, No. 5 : 2020.  
3. Pham, Khanh Do-Cong. Case Report Series 4 – Moray micro forceps. Data on file at STERIS Endoscopy.

# STRENGTH AND PRECISION



SCAN to  
Learn More

## RAPTOR™ Grasping Devices

The **RAPTOR Grasping Devices** offer versatility for retrieving stents and a variety of foreign bodies including safety pins, needles etc.

### RAPTOR Disposable Grasping Forceps

- » Offers full 360-degree rotation to aid in grasping tissue, stone, stents or foreign bodies within the GI tract
- » No external arm mechanisms providing ability to pull jaws closer to the endoscope upon extubation

### RAPTOR Grasping Device

- » Combines alligator and rat tooth grasper capabilities into one device, increasing gripping ability
- » Flexible distal catheter operates in a retroflexed position and in side-viewing endoscopes

### RAPTOR Grasping Device - Mini:

- » Features a smaller hybrid jaw and catheter option for tight or torqued positions
- » Specifically designed for procedures requiring an ultra-slim endoscope





SCAN to  
Learn More



INNOVATION  
FOCUSED

## DEFENDO™ Single-Use Valves

**DEFENDO Single-Use Valves** are compatible with leading GI endoscopes, including Olympus™, Pentax™ 90 and i10 series, and FujiFilm™ 500, 600 and 700 series.

- » DEFENDO Single-use Valves for Olympus™ Endoscopes



- » DEFENDO Single-use Valves for Pentax™ 90 and i10 series Endoscopes



- » DEFENDO Single-use Valves for Fujifilm™ 500 and 600 series Endoscopes



- » DEFENDO Single-use Valves for Fujifilm™ 700 series Endoscopes \*



# PRODUCT CHART

Product Number	Description	Units/Box
BX00711110	COINTIP™ Snare	10
BX00711176	RAPTOR™ Disposable Grasping Forceps	5
BX00711177	RAPTOR™ Grasping Device	5
BX00711178	RAPTOR™ Grasping Device - Mini	5
BX00711169	ROTH NET™ Retriever - Select (sterile)	10
BX00711170	ROTH NET™ Retriever - Select	5
C910001	PADLOCK CLIP™ Defect Closure System	1
C913131	PADLOCK CLIP™ PRO-SELECT™ Defect Closure System	1
BX00711115	EXACTO™ Cold Snare	10
BX00711094	EXACTO™ Cold Snare	20
BX00711095	EXACTO™ Cold snare	50
BX00711099	ETRAP™ Polyp Trap	25
BX00711660	HISTOGUIDE™ Wire-Guided Forceps	5
BX00711652	INFINITY™ ERCP Sampling Device	5
BX00711653	INFINITY™ ERCP Sampling Device	5
BX00711811	CARR-LOCKE Injection Needle 25GA	5
BX00711812	CARR LOCKE Injection Needle 23GA	5
BX00711813	CARR LOCKE Injection Needle 25GA	5
BX00711814	CARR-LOCKE Injection Needle 23GA	5
BX00711822	CARR-LOCKE Injection Needle 25GA	5
BX00711823	CARR-LOCKE Injection Needle 25GA	10
BX00711824	CARR-LOCKE Injection Needle 23GA	10
BX00711889	MORAY™ Micro Forceps	3
BX00715050	ROTH NET™ Platinum™ Retriever- Universal	5
SLK6*	SMARTBAND™ Multi-Band Ligation Kit	EA
SLK6LF**	SMARTBAND™ SAFEGRIP™ Multi-Band Ligation Kit	EA
SLP6*	SMARTBAND™ Multi-Band Ligation Pack	EA
SLP6LF**	SMARTBAND™ SAFEGRIP™ Multi-Band Ligation Pack	EA

\* manufactured with natural rubber latex

\*\* not manufactured with natural rubber latex

Product Number	Description	Units/Box
<b>OLYMPUS™ GI Endoscopes</b>		
100301	DEFENDO™ Single-Use Biopsy Valve	50
100303	DEFENDO™ Single-Use Y-OPSY™ Valve	50
100322	DEFENDO™ Single-Use Valves – 5-PC Kit	50
100323	DEFENDO™ Single-Use Valves – 4-PC Kit	50
100310	DEFENDO™ Single-Use Valves – 4-PC Kit	50
100311	DEFENDO™ Single-Use Valves – 3-PC Kit	50
100305	DEFENDO™ Single-Use Valves – 3-PC Kit	50
100306	DEFENDO™ Single-Use Valves – 2-PC Kit	50
4000096	DEFENDO™ Single-Use Cleaning Adapter (Single Pack, STERILE)	50
4003269	DEFENDO™ Single-Use Valves – 3-PC Kit	50
4003280	DEFENDO™ Single-Use Valves – 4-PC Kit	50
<b>PENTAX™ GI Endoscopes</b>		
100302	DEFENDO™ Single-Use Biopsy Valve	50
<b>PENTAX™ 90 and i10 Series GI Endoscopes</b>		
100315	DEFENDO™ Single-Use Valves – 4-PC Kit	50
100316	DEFENDO™ Single-Use Valves – 3-PC Kit	50
100317	DEFENDO™ Single-Use Valves – 2-PC Kit	50
<b>FUJIFILM™ GI Endoscopes</b>		
100301	DEFENDO™ Single-Use Biopsy Valve	50
100303	DEFENDO™ Single-Use Y-OPSY™ Valve	50
<b>FUJIFILM™ 500 and 600 Series GI Endoscopes</b>		
100312	DEFENDO™ Single-Use Valves – 4-PC Kit	50
100313	DEFENDO™ Single-Use Valves – 3-PC Kit	50
100314	DEFENDO™ Single-Use Valves – 2-PC Kit	50
<b>FUJIFILM™ 700 Series GI Endoscopes</b>		
100325	DEFENDO™ Single-Use Valves – 5-PC Kit	50
100328	DEFENDO™ Single-Use Valves – 4-PC Kit	50
100330	DEFENDO™ Single-Use Valves – 3-PC Kit	50
100331	DEFENDO™ Single-Use Valves – 4-PC Kit	50
100333	DEFENDO™ Single Use Valves – 4-PC KIT	50
100335	DEFENDO™ Single Use Valves – 3-PC KIT	50
100336	DEFENDO™ Single Use Valves – 2-PC KIT	50



STERIS  
5960 Heisley Road  
Mentor, OH 44060-1834 - USA  
Customer Service: +1 800-548-4873  
Fax: 440-639-4450  
[www.steris.com](http://www.steris.com)

[www.steris.com](http://www.steris.com)

©2024 STERIS. All rights reserved.  
All company and product names are trademarks of STERIS,  
its affiliates or related companies, unless otherwise noted.

Follow us:    