

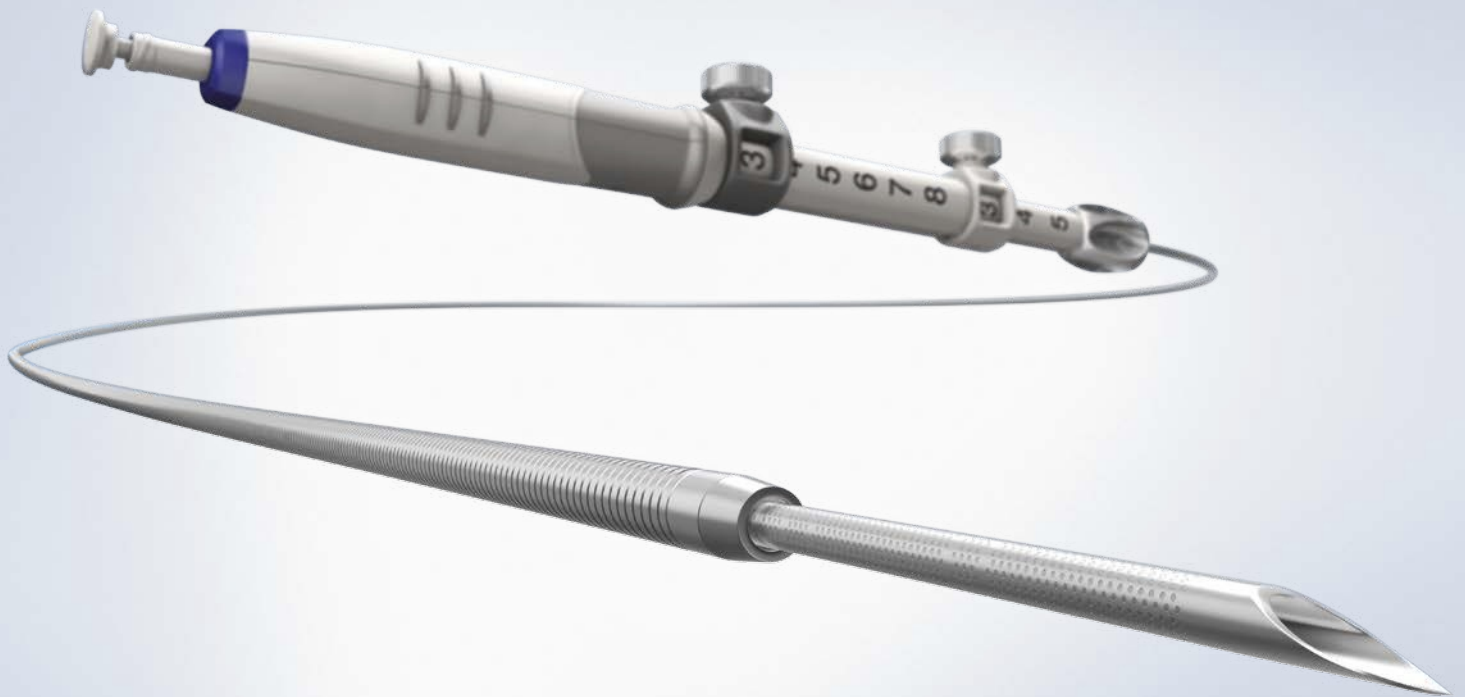
OLYMPUS

Your Vision, Our Future

Endo**Therapy**

EZSHOT 3 PLUS

Access Difficult Locations with Ease and Confidence



UNCOMPROMISED ACCESS TO THE PANCREATIC HEAD

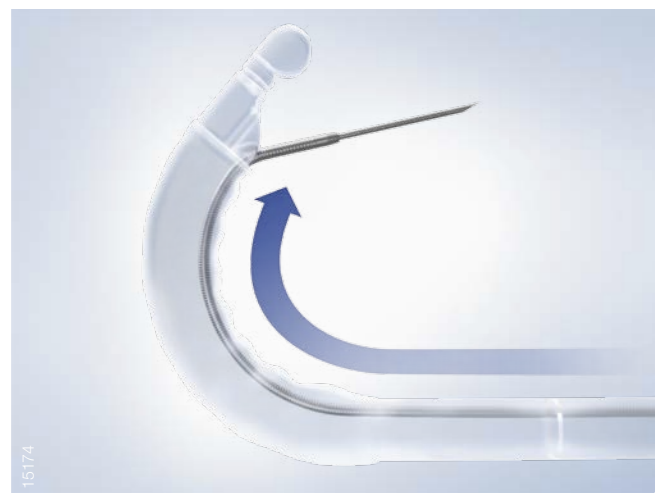
Needle Flexibility Provides Unparalleled Access

- Reduced insertion force even when scope is angulated
- No need for scope position adjustments to compensate for larger diameter needle
- Improved access to lesions in difficult locations



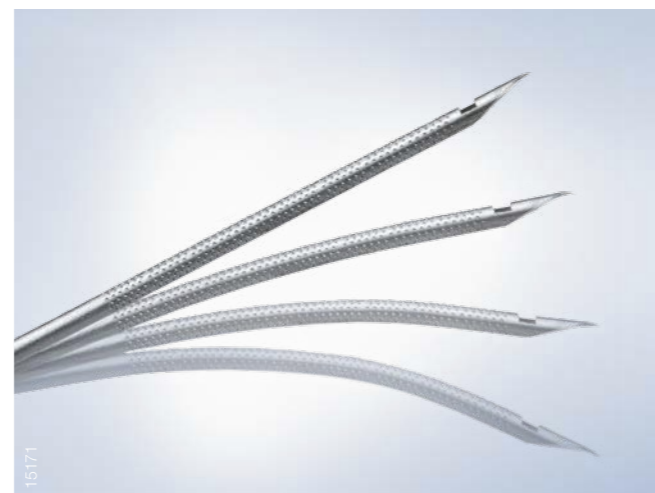
Access from Wider Angles

Deep tissue can be punctured regardless of scope angle.



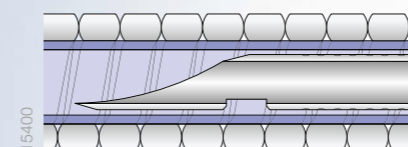
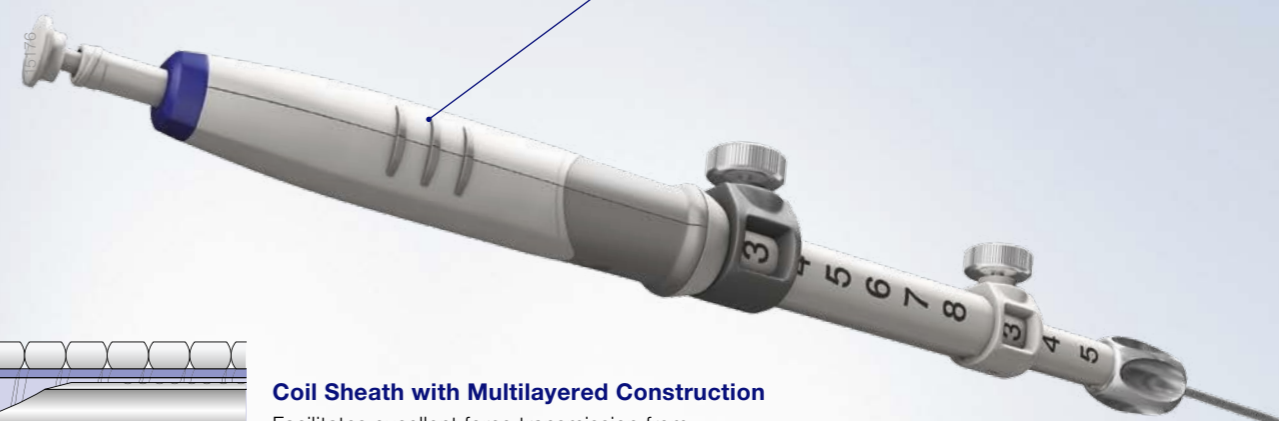
Resilient Needle Shape

Nitinol retains its shape without any deformation even after multiple passes. This helps ensure the needle follows a predictable and consistent trajectory.



Improved Handle Maneuverability

Convenient and controlled handling

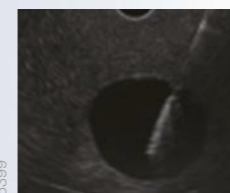
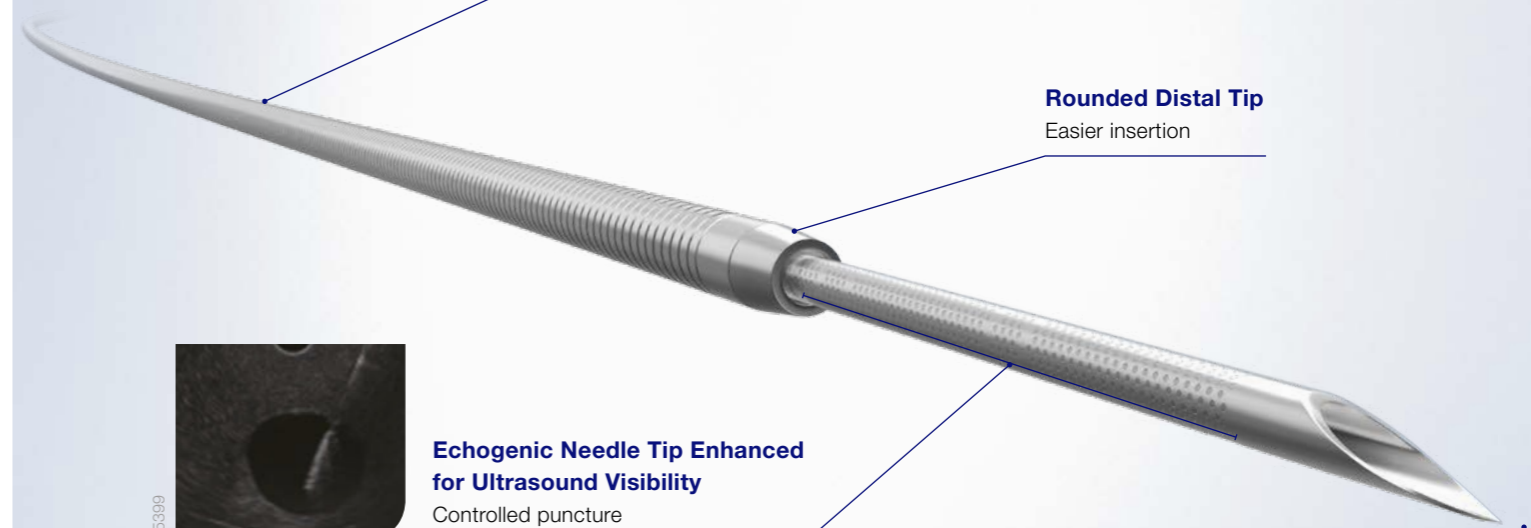


Coil Sheath with Multilayered Construction

Facilitates excellent force transmission from the handle to the needle tip.

Rounded Distal Tip

Easier insertion



Echogenic Needle Tip Enhanced for Ultrasound Visibility

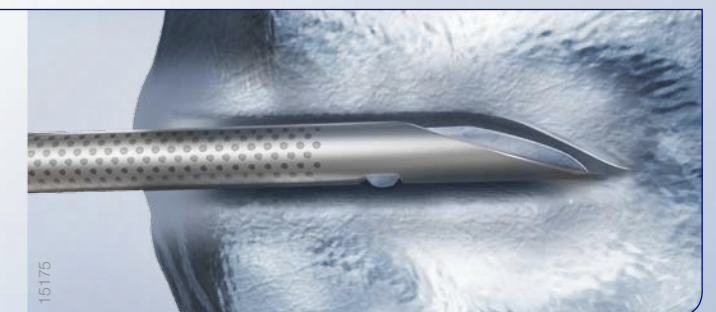
Controlled puncture

Sharp Needle Tip

Menghini-type tip with sharp edges supports smooth puncture even at an oblique angle.

Side Hole Option

Both models are also available with a side hole which helps to collect the sample within the needle.



EZSHOT 3 PLUS

Specifications

Article Name	Order Number	Quantity	Min. Working Channel Ø	Working Length	Max. Needle Length	Needle Ø	Stylet Tip Shape
NA-U200H-8019	N5409330	5	2.8 mm	1400 mm	80 mm	19G	Rounded
NA-U200H-8019S	N5409530	5	2.8 mm	1400 mm	80 mm	19G with side hole	Rounded
NA-U200H-8022	N5409730	5	2.8 mm	1400 mm	80 mm	22G	Rounded
NA-U200H-8022S	N5409930	5	2.8 mm	1400 mm	80 mm	22G with side hole	Rounded

Standard Set Contents

A set: 5 pcs/box



Specifications, design, and accessories are subject to change without any notice or obligation on the part of the manufacturer.

OLYMPUS

OLYMPUS EUROPA SE & CO. KG

Postbox 10 49 08, 20034 Hamburg, Germany
Wendenstrasse 14-18, 20097 Hamburg, Germany
Phone: +49 40 23773-0, Fax: +49 40 233765
www.olympus-europa.com