



LOCKADO™ G-TYPE

QUALITY IN A NEW SIZE

With the LOCKADO™ G-Type, MICRO-TECH sets the standard in clip hemostasis. Its span of 20mm encloses a particularly large amount of tissue, so that even larger lesions, defects and tumors can be treated with just a few clips. In order to position the LOCKADO™ precisely, it is possible to open and close it several times before placement. Reliable gripping of the tissue is ensured with the ten teeth, six of which are arranged laterally. The increased

compression pressure further strengthens the hold and ensures reliable closure. Like every LOCKADO™, the G-Type is characterized by a very short clip segment. This protrudes only a few millimeters into the lumen, so that surrounding tissue is not affected. For smaller lesions, the LOCKADO™ range includes clips with openings of 8, 11 and 16mm. This means that the ideal hemostasis solution is always available, depending on the application and area of use.

SPECIFIC CHARACTERISTICS

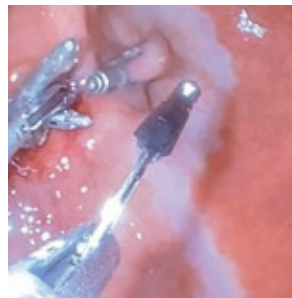
- Maximum span of up to 20mm
- Stop bleeding quickly and safely
- Increased compression pressure
- Ten teeth ensure ideal hold
- Repeated opening and closing before fixation
- Good fixation due to better adaptation of tissue
- Short clip segment for minimized tissue damage
- Precise control even in angled areas
- Reliable 360° bidirectional rotation
- 1:1 Transfer
- MRI ready



Ergonomic handle for precise control and clip rotations



Other span widths:
8, 11 and 16mm



SAMPLE APPLICATIONS

- Closure after POEM therapy
- Closure after Zenker's diverticulotomy
- Adaptation of wound edges according to ESD

SPECIFICATIONS

REF	Clip max. span width mm	Length mm	Clip angle	Instrument Ø mm	Grip color	Covering
LOCKADO™ G-Type						
LOCK-G-26-195-C	20	1950	135°	2.6	Grey	Grey
LOCK-G-26-230-C	20	2300	135°	2.6	Grey	Grey
LOCKADO™						
LOCK-C-26-195-C	8	1950	135°	2.6	Pink	Pink
LOCK-C-26-230-C	8	2300	135°	2.6	Pink	Pink
LOCK-D-26-195-C	11	1950	135°	2.6	Blue	Blue
LOCK-D-26-230-C	11	2300	135°	2.6	Blue	Blue
LOCK-F-26-195-C	16	1950	135°	2.6	Yellow	Yellow
LOCK-F-26-230-C	16	2300	135°	2.6	Yellow	Yellow

Packing unit: 10 pcs.