



## RESECTION

SNARES, ESD-KNIFE, COAGULATION FORCEPS,  
INJECTION NEEDLES, POLYP TRAP AND NETS



# DAILYSNARE

## MORE COMFORT AND RELIABILITY IN EVERYDAY HOSPITAL ROUTINE

In order to make the removal of polyps in everyday hospital routine as efficient as possible, MICRO-TECH has developed a program of disposable polypectomy snares which perfectly combines quality with cost effectiveness. Each

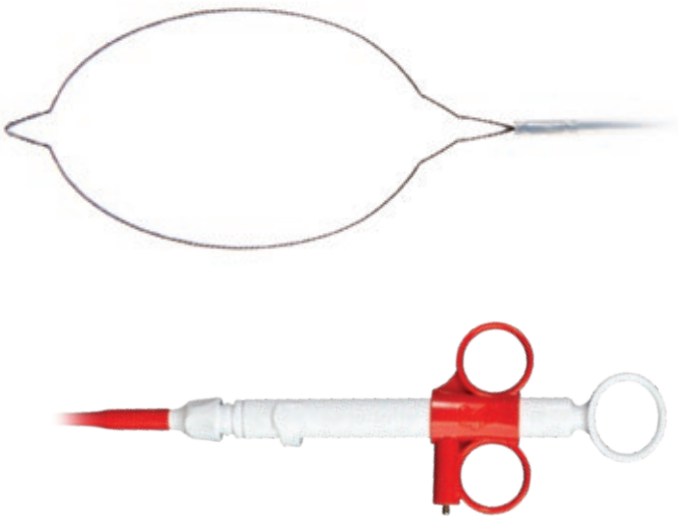
oval snare is made of a specially stranded wire, with enduring radial force, high dimensional stability and precise cutting properties. The 3-ring handle offers a secure hold and transmits every movement reliably to the snare.

### SPECIFIC CHARACTERISTICS

- Very comfortable to use
- Reliable and safe
- Innovative HF-connection
- Ergonomic 3-ring handle
- Excellent cutting properties
- High strength of shape

### SUCCESSFUL IN PRACTICAL USE

The special stranded wire of DailySnare endows the snare with the radial force it needs to open and be controlled in any position, easily and reliably. DailySnare has proved its worth as a reliable solution in daily routine work owing to its enormous dimensional stability and good cutting properties. Thanks to the new handle the snare can easily be opened and closed even if connected to the HF-cable.



### SPECIFICATIONS

| REF                | Catheter Ø mm | Length mm | Snare Ø mm | Snare type   |
|--------------------|---------------|-----------|------------|--------------|
| POLYPECTOMY SNARES |               |           |            |              |
| PFS01-01023230     | 2.3           | 2300      | 10         | Oval         |
| PFS01-01523230     | 2.3           | 2300      | 15         | Oval         |
| PFS01-02023230     | 2.3           | 2300      | 20         | Oval         |
| PFS01-02423230     | 2.3           | 2300      | 24         | Oval         |
| PFS01-03623230     | 2.3           | 2300      | 36         | Oval         |
| PFS01-12423230     | 2.3           | 2300      | 24         | Hexagonal    |
| PFS01-22423230     | 2.3           | 2300      | 24         | Crescent     |
| PFS01-33023230     | 2.3           | 2300      | 10/ 20/ 30 | 3 in 1 vario |

Packaging unit: 10 pieces



# POLYPECTOMY SNARES FROM BAUER MEDICAL

## PRECISE POLYPECTOMIES MADE EASY

Combination snares from bauer medical - always a good choice for polypectomies. Polyps can be removed easily and reliably, thanks to the continuous single-handed rotary adjustment feature. Just a slight turn of the wrist is enough to precisely convey the movement to the snare.

The variable snare head can be adjusted from 25 mm to 15 mm during the examination, and also has an atraumatic rounded catheter tip. The excellent expansion capacity of the snare combines with well-balanced coagulation and cutting features for first-class polypectomy results.

### SPECIFIC CHARACTERISTICS

- Ergonomic 3-ring handle
- Continuous, 360° adjustability
- For combination snares: variably adjustable snare sizes
- Optimal adaptation to the most difficult polyp locations
- Good expansion capacity
- Precise coagulation and cutting features



Snare partially and fully extended



Handle with HF connection for precise cutting

### SPECIFICATIONS

| REF                      | Catheter Ø mm | Length mm | Snare Ø mm | Snare type        | Features                 |
|--------------------------|---------------|-----------|------------|-------------------|--------------------------|
| BAUER SNARES POLYPECTOMY |               |           |            |                   |                          |
| PS1-A11-10-23-220-OL     | 2.3           | 2200      | 10         | Oval              | multifil; rotating       |
| PS1-A11-15-23-220-OL     | 2.3           | 2200      | 15         | Oval              | multifil; rotating       |
| PS1-A11-25-23-220-OL     | 2.3           | 2200      | 25         | Oval              | multifil; rotating       |
| PS1-A20-10-23-220-OL     | 2.3           | 2200      | 10         | Oval              | monofil                  |
| PS1-A20-15-23-220-OL     | 2.3           | 2200      | 15         | Oval              | monofil                  |
| PS1-A20-25-23-220-OL     | 2.3           | 2200      | 25         | Oval              | monofil                  |
| PS1-A22-25-23-220-OL     | 2.3           | 2200      | 15/25      | Oval              | monofil-combi            |
| PS1-A23-25-23-220-OL     | 2.3           | 2200      | 15/25      | Oval              | monofil-combi; rotating  |
| PS1-A30-30-23-220-OL     | 2.3           | 2200      | 15/30      | Oval              | multifil-combi           |
| PS1-A31-30-23-220-OL     | 2.3           | 2200      | 15/30      | Oval              | multifil-combi; rotating |
| PS1-A30-20-23-220-OL     | 2.3           | 2200      | 10/20      | Oval              | multifil-combi           |
| PS1-A31-20-23-220-OL     | 2.3           | 2200      | 10/20      | Oval              | multifil-combi; rotating |
| PS1-A50-25-23-220-OL     | 2.3           | 2200      | 15/25      | Asymmetric        | multifil-combi           |
| BAUER SNARES EMR         |               |           |            |                   |                          |
| PS1-A61-10-23-220-OL     | 2.3           | 2200      | 10         | Type Erlangen-EMR | flat wire; rotating      |
| PS1-A61-15-23-220-OL     | 2.3           | 2200      | 15         | Type Erlangen-EMR | flat wire; rotating      |
| PS1-A61-25-23-220-OL     | 2.3           | 2200      | 25         | Type Erlangen-EMR | flat wire; rotating      |
| PS1-A61-30-23-220-OL     | 2.3           | 2200      | 30         | Type Erlangen-EMR | flat wire; rotating      |

Packaging unit: 10 pieces



# ENDOnx POLYPECTOME

## PRECISE REMOVAL WITHOUT ORGAN DAMAGE

The ENDOnx Polypectomy Snare is characterized mainly by a cutting wire insulated on one side and the insulated nose. This makes it possible to reduce the use of HF-current by half. The system ensures reliable removal of polyps lying close to the organ wall and makes the initial

incision and cutting phases particularly efficient. Thermal damage of the muscularis propria and serosa are prevented, as are thermal artifacts on the resectate. The ergonomic 3-ring handle with tactile handling ensures controlled cutting.

### SPECIFIC CHARACTERISTICS

- Minimization of initial incision delay
- Minimum perforation risk
- Endoscopic control
- Precise snare-guiding
- Ergonomic handle
- Connection for the HF-cable



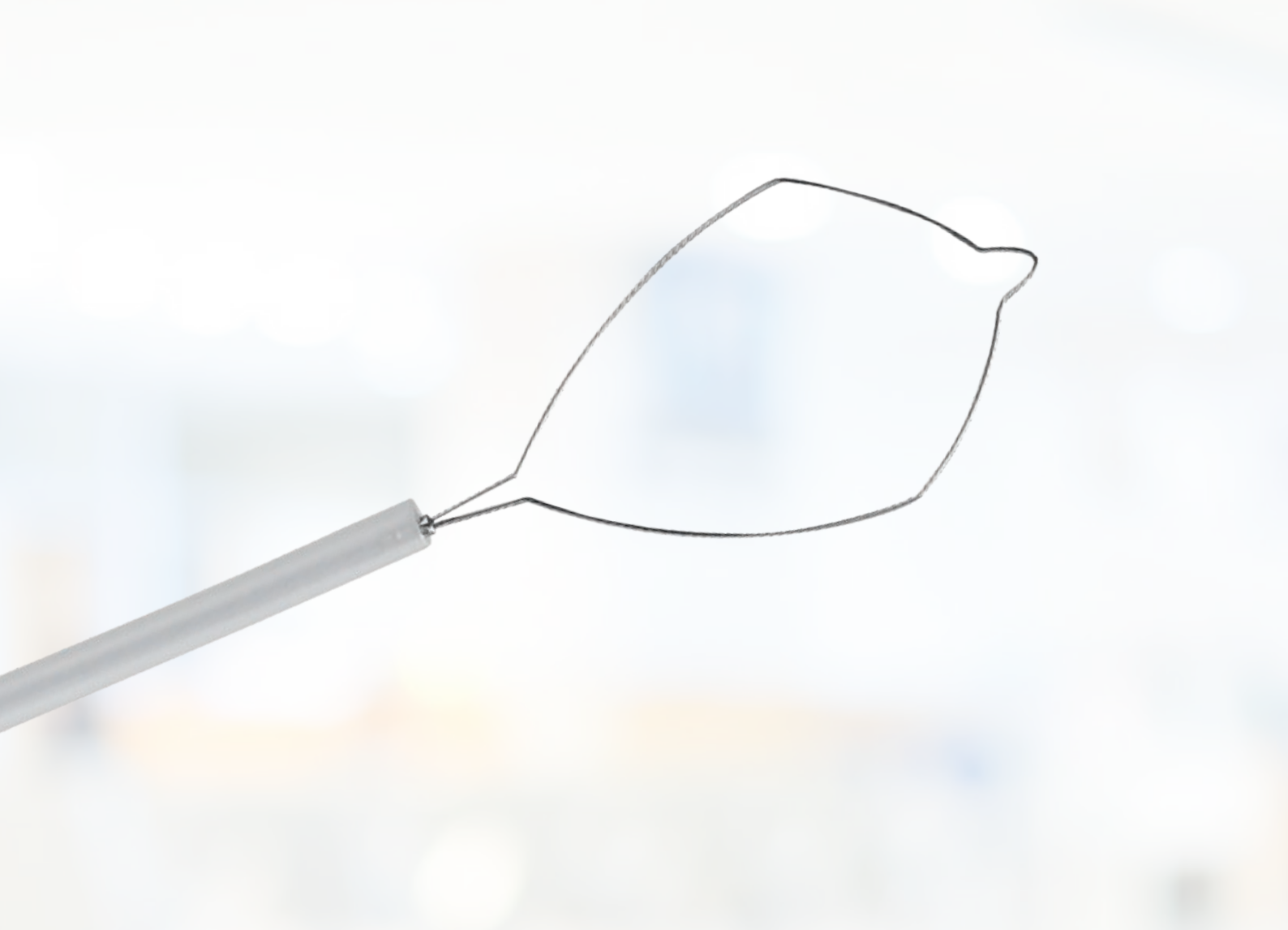
Ergonomical 3-ring handle with connection for Olympus HF-cable

### SPECIFICATIONS

| REF                | Snare type | Snare Ø mm | Length mm | Catheter Ø mm |
|--------------------|------------|------------|-----------|---------------|
| ENDOnx POLYPECTOME |            |            |           |               |
| 901193             | Oval       | 20         | 2160      | 2.3           |
| 901107             | Oval       | 30         | 2160      | 2.3           |

Packaging unit: 2 pieces





# COLDSNARE

## RELIABLE RESECTION OF POLYPS <10 MM

The Coldsnares from MICRO-TECH is an instrument that is suitable above all for cold resection of polyps < 10 mm. This thin, braided cutting wire was specially developed for cold resection and makes for a highly precise, clean cut in

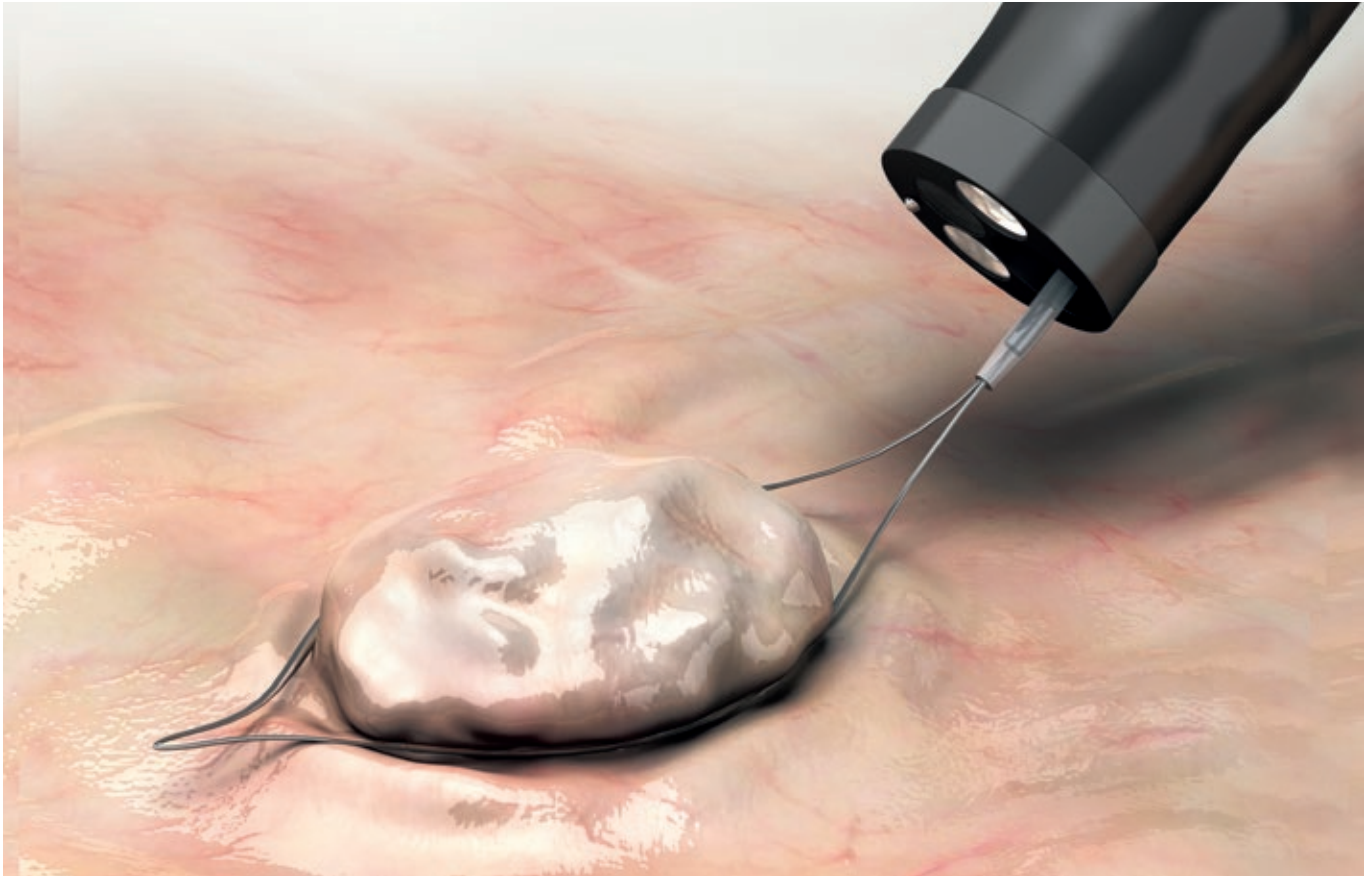
combination with the snare design optimized for excision of small polyps. The excised polyp is free of thermal defects and ensures that the histological assessment will provide valuable information.

### SPECIFIC CHARACTERISTICS

- Developed for polyps < 10 mm
- Special cutting wire
- Optimized snare design
- Precise, uniform cut
- High level of control
- Ergonomic grip



Precision grip with ergonomic design



### SPECIFICATIONS

| REF          | Tube Ø mm | Length mm | Snare Ø mm | Snare type | Wire Ø mm |
|--------------|-----------|-----------|------------|------------|-----------|
| COLDSNARE    |           |           |            |            |           |
| CS3-11023230 | 2.3       | 2300      | 10         | Rhombus    | 0.23      |
| CS3-11523230 | 2.3       | 2300      | 15         | Rhombus    | 0.23      |

Packaging unit: 10 pieces



# GOLDKNIFE

## ONE INSTRUMENT, FOUR OPERATION STEPS

The GOLDKNIFE from MICRO-TECH allows for effective and reliable endoscopic submucosal dissections. Thanks to the combination of water-jet and electro-surgery, all working steps - marking, injection, dissection and coagulation - can be performed without switching instruments. The high-pressure water jet function creates a submuco-

sal pillow of water that allows replenishment at any time to protect against thermal and mechanical injuries. The handle facilitates a smooth and seamless extension of the knife. The balanced rigidity of the tube also enables precise knife guidance. Choose from three different needle tips with different cutting and coagulation properties.

### SPECIFIC CHARACTERISTICS

- Water-jet and electro-surgery in one
- Independent marking, injection, dissection and coagulation without switching instruments
- Replenishing the water pillow (optional) while dissecting and resecting
- 3 different knife types



Handle with rotatable coagulation connection



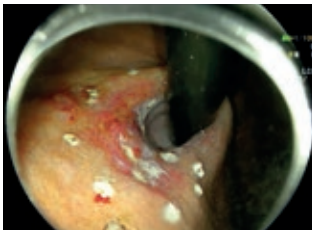
Type I: Great freedom of movement, versatile, higher level of difficulty



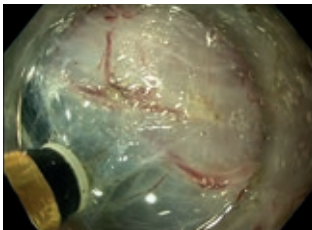
Type T: Ideal for removing under tension. Better coagulation options and optimized cutting direction while dissecting



Type O: Crescent-shaped tip maximizes coagulation effect



Marking



Injection water cushion



Dissection



Findings after removal

### SPECIFICATIONS

| REF              | Shape of the knife tip | Length of the knife tip mm | Working length mm | Working channel Ø mm |
|------------------|------------------------|----------------------------|-------------------|----------------------|
| GOLDKNIFE-I-TYPE |                        |                            |                   |                      |
| MK-I-1-165       | I                      | 1.5                        | 1650              | 2.8                  |
| MK-I-1-235       | I                      | 1.5                        | 2350              | 2.8                  |
| MK-I-2-165       | I                      | 2                          | 1650              | 2.8                  |
| MK-I-2-235       | I                      | 2                          | 2350              | 2.8                  |
| MK-I-4-165       | I                      | 4                          | 1650              | 2.8                  |
| MK-I-4-235       | I                      | 4                          | 2350              | 2.8                  |
| GOLDKNIFE-T-TYPE |                        |                            |                   |                      |
| MK-T-1-165       | T                      | 1.5                        | 1650              | 2.8                  |
| MK-T-1-235       | T                      | 1.5                        | 2350              | 2.8                  |
| MK-T-2-165       | T                      | 2                          | 1650              | 2.8                  |
| MK-T-2-235       | T                      | 2                          | 2350              | 2.8                  |
| MK-T-4-165       | T                      | 4                          | 1650              | 2.8                  |
| MK-T-4-235       | T                      | 4                          | 2350              | 2.8                  |
| GOLDKNIFE-O-TYPE |                        |                            |                   |                      |
| MK-O-1-165       | O                      | 1.5                        | 1650              | 2.8                  |
| MK-O-1-235       | O                      | 1.5                        | 2350              | 2.8                  |
| MK-O-2-165       | O                      | 2                          | 1650              | 2.8                  |
| MK-O-2-235       | O                      | 2                          | 2350              | 2.8                  |
| MK-O-4-165       | O                      | 4                          | 1650              | 2.8                  |
| MK-O-4-235       | O                      | 4                          | 2350              | 2.8                  |

Packaging unit: 1 piece

# ENSURE

## FORCEPS FOR SAFE COAGULATION

MICRO-TECH ENSURE Coagulation Forceps are designed to assist physicians in effectively coagulating bleeding sites during interventional endoscopic procedures. They allow the user to securely grasp vessels and cut or coagulate them using high-frequency current. Bleeding vessels can be reliably staunched during and after endoscopic submucosal dissection, without harming the surrounding tissue. This is ensured by the toothed cups of the forceps, which

are available in three different types. The serrated design of these forceps ensures a secure grip, preventing slip-page during coagulation. Thanks to the maximum opening width of up to 7.2 mm, these forceps can also be used reliably to treat bleedings in a variety of locations. Precise and comfortable operation is ensured by the ergonomic handle, whose connection port can be rotated bidirectionally through 360°.

### SPECIFIC CHARACTERISTICS

- For effective hemostasis during ESD and EMR
- Secure, non-slip hold
- Three different cup types
- Reliable, 360° bi-directional rotation
- Opening width 6.3 – 7.2 mm



Ergonomic 3-ring handle with soft grip and 360° coagulation connection



Type A: with tapered tip and teeth



Type B: with grooves for a broad contact surface



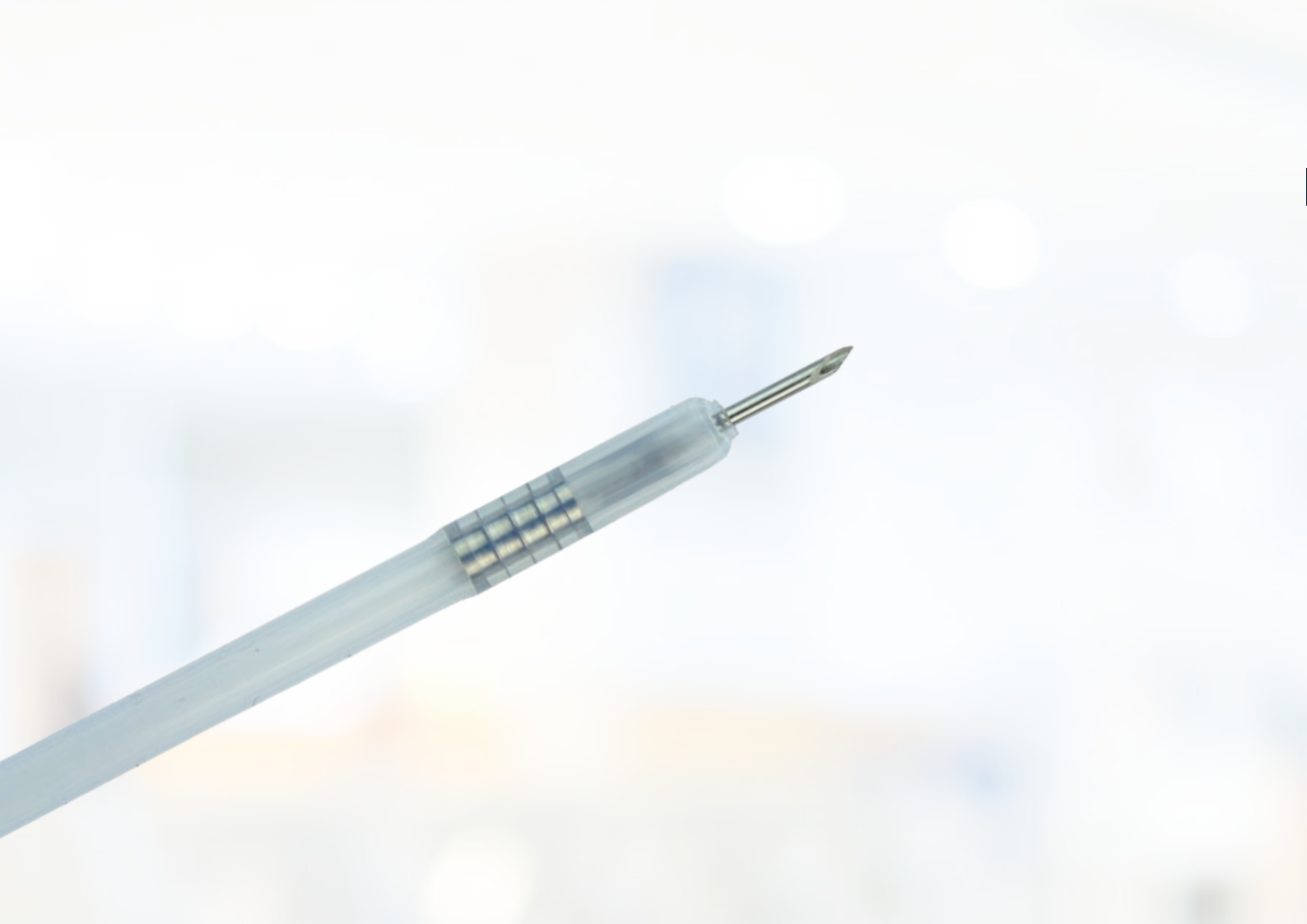
Type C: large branch with maximum opening width

### SPECIFICATIONS

| REF      | Opening width mm | Length mm | Branch  | Exterior diameter of distal tips mm | Working channel Ø mm |
|----------|------------------|-----------|---------|-------------------------------------|----------------------|
| TYPE A   |                  |           |         |                                     |                      |
| CF-165-A | 6.5              | 1650      | tapered | ≤ 2.7                               | ≥ 2.8                |
| CF-230-A | 6.5              | 2300      | tapered | ≤ 2.7                               | ≥ 2.8                |
| TYPE B   |                  |           |         |                                     |                      |
| CF-165-B | 6.3              | 1650      | grooved | ≤ 2.7                               | ≥ 2.8                |
| CF-230-B | 6.3              | 2300      | grooved | ≤ 2.7                               | ≥ 2.8                |
| TYPE C   |                  |           |         |                                     |                      |
| CF-165-C | 7.2              | 1650      | oval    | ≤ 2.7                               | ≥ 2.8                |
| CF-230-C | 7.2              | 2300      | oval    | ≤ 2.7                               | ≥ 2.8                |

Packaging unit: 10 pieces





# INJECTION NEEDLE

## RELIABLE AND SAFE TO THE TIP

MICRO-TECH’s disposable injection needle facilitates clinical practice due to its ergonomic handle and especially sharp needle. The anti-skid design guarantees convenient control with just one hand. For even more precise punc-

tures the handle can be locked in several stages. When the needle is released, it snaps back into the catheter to avoid damage to the working channel.

### SPECIFIC CHARACTERISTICS

- Ergonomic anti-slip handle
- Adjustable pressure pad
- Automatic needle-feed
- Soft, atraumatic silicone head
- Needle with extremely sharp, precision cut
- Different needle diameters
- LL needle connector



Needle completely retracted

Compact ergonomical design

### SPECIFICATIONS

| REF                                 | Needle stroke<br>mm | Needle Ø      | Working length<br>Ø mm | Length mm |
|-------------------------------------|---------------------|---------------|------------------------|-----------|
| INJECTION NEEDLE – POLYPECTOMY /EMR |                     |               |                        |           |
| IN12-195232302                      | 5                   | 19 G = 0.9 mm | 2.8                    | 2300      |
| IN12-225232302                      | 5                   | 22 G = 0.7 mm | 2.8                    | 2300      |
| IN12-255232302                      | 5                   | 25 G = 0.5 mm | 2.8                    | 2300      |
| INJECTION NEEDLE – ESD              |                     |               |                        |           |
| IN12-224232302                      | 4                   | 22 G = 0.7 mm | 2.8                    | 2300      |
| IN12-254232302                      | 4                   | 25 G = 0.5 mm | 2.8                    | 2300      |

Packaging unit: 10 pieces

Also available in other versions



# POLYP TRAP

## WITH FOUR CHAMBERS

### SPECIFIC CHARACTERISTICS

- Four separate numbered chambers in transparent transport container
- Flexible connecting hoses
- Accurate allocation of samples
- Safe connection to endoscope and suction system



### SPECIFICATIONS

| REF        | Description               |
|------------|---------------------------|
| POLYP TRAP |                           |
| BBP-50     | Polyp trap with 4-chamber |





# NETS

## SAFELY REMOVE FOREIGN BODIES AND POLYPS

The MT net has been developed for the removal of polyps and foreign bodies and enables the reliable recovery of tissue samples. The net itself consists of a reinforced thread

material, which offers additional safety during recovery. Thanks to its unique dimensional stability and large opening, it facilitates work over several passes

### SPECIFIC CHARACTERISTICS

- Large net
- High quality manufacture
- Comfortable 3-ring handle
- Easy and precise opening



Shape stable MT net

### SPECIFICATIONS

| REF           | Ø net mm | Snare | Working length mm | Ø working channel mm |
|---------------|----------|-------|-------------------|----------------------|
| RETRIEVAL NET |          |       |                   |                      |
| NT-E-30/23-P  | 30       | Oval  | 2300              | 2.8                  |
| NT-E-30/16-P  | 30       | Oval  | 1600              | 2.8                  |

Packaging unit: 2 pieces

Grid of dots for notes on page 18.

Grid of dots for notes on page 19.

