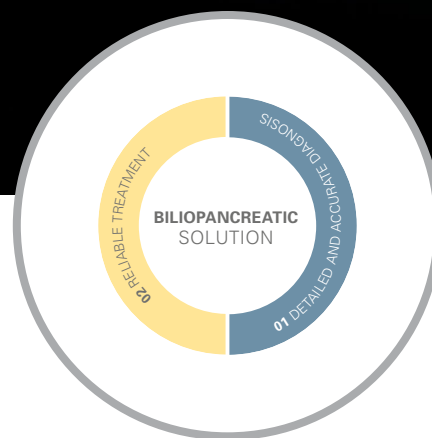


## BROADEN YOUR PERSPECTIVE

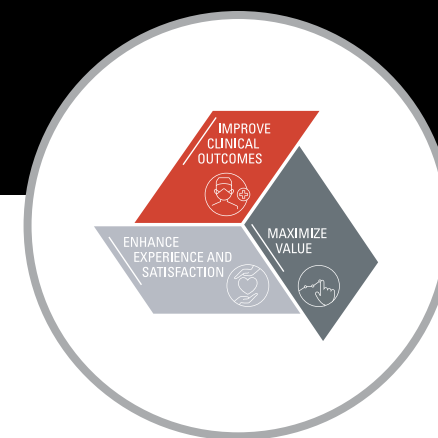
*The new way of doing. The new way of seeing.  
The new way of treating. Explore the EUS-J10 line-up.*



EUS-J10 line-up



Clinical Solution



Triple Aim

Broaden your perspective.  
**Explore the EUS-J10 line-up.**

**PENTAX**  
MEDICAL

**The new way of doing. The new way of seeing. The new way of treating.**  
The EUS-J10 line-up is **designed for optimized procedural efficiency** during diagnostic EUS, EUS-FNA/FNB, and therapy.



**EG36-J10UR**



**EG34-J10U**

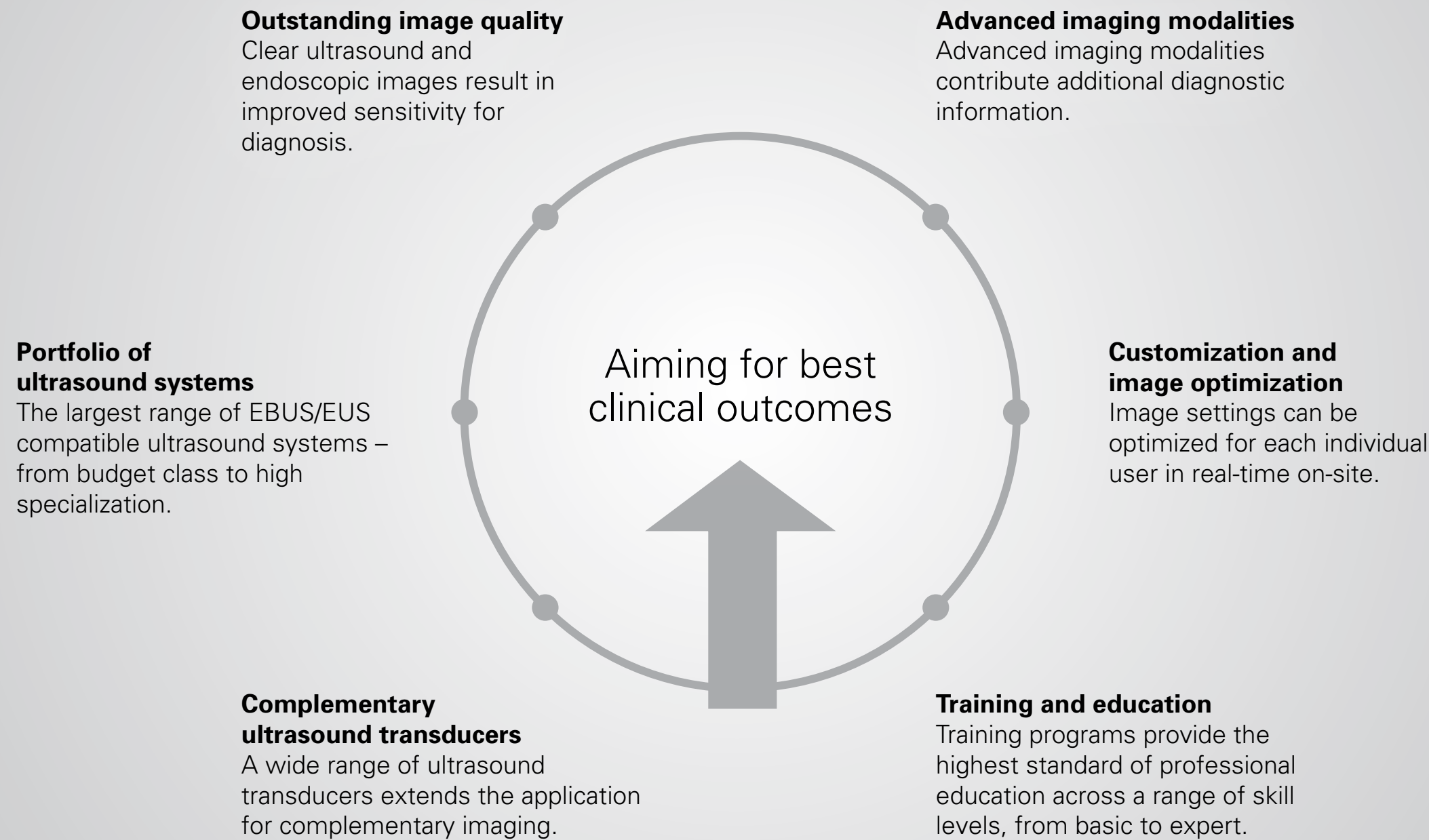


**EG38-J10UT**





# PENTAX Medical and Ultrasound Scanner: Leveraging strong synergies for the best clinical outcomes




Broaden your perspective.  
**Explore the EUS-J10 line-up.**



PENTAX Medical always has Triple Aim in mind when providing solutions to you, in order to support your goals of improving clinical outcomes, improving healthcare productivity and enhancing provider and patient experience.


**Optimize access**

Increased maneuverability and improved ergonomics contribute superb stability and ease of intubation to support higher procedural success rates, optimized working comfort, and better patient tolerance. *The new way of doing.*

Click for more information 


**Enrich diagnostic findings**

Greater detail, better delineation, and superior penetration: a proven PENTAX Medical image quality enhanced to provide improved diagnostic outcomes, and guidance on therapy. *The new way of seeing.*

Click for more information 

**Redefine therapy**

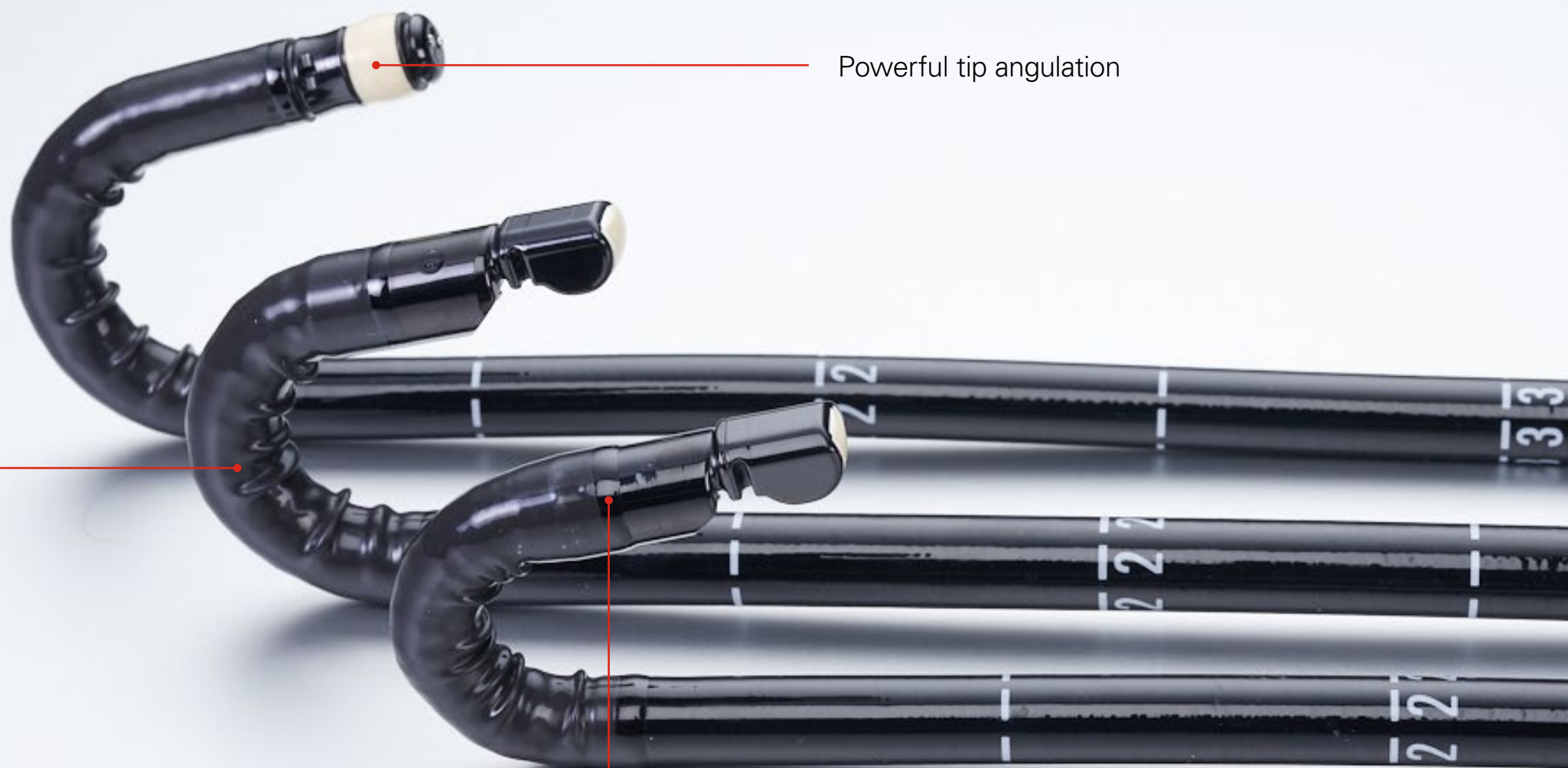
A unique, enlarged 4.0 mm working channel expands therapeutic capabilities to advance EUS-guided intervention while providing full control of the procedure. *The new way of treating patients.*

Click for more information 

# Optimize access. The new way of doing.

**PENTAX**  
MEDICAL

Supports higher procedural success rates, optimized working comfort, and better patient tolerance through increased maneuverability:



Powerful tip angulation

Smaller bending radius

Shorter rigid distal  
portion lengths





Optimize access.  
**The new way of doing.**

**PENTAX**  
MEDICAL

Supports higher procedural success rates, optimized working comfort, and better patient tolerance through improved ergonomics and lightweight control body:

Ergonomically designed control knobs

One umbilical cable to reduce stress injury and keep better balance

New braking mechanism for better device control

Air/water nozzle to maintain good endoscopic view

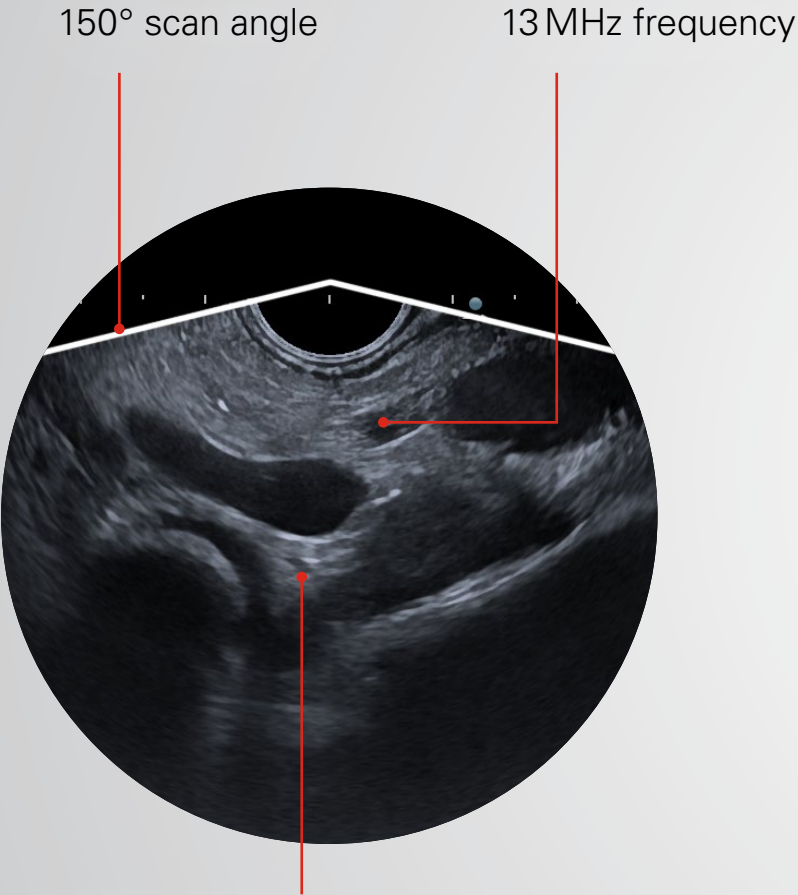
Newly designed for optimized handling:  
- Air/water/balloon feeding valve OF-B207  
- Suction/balloon suction control valve OF-B206



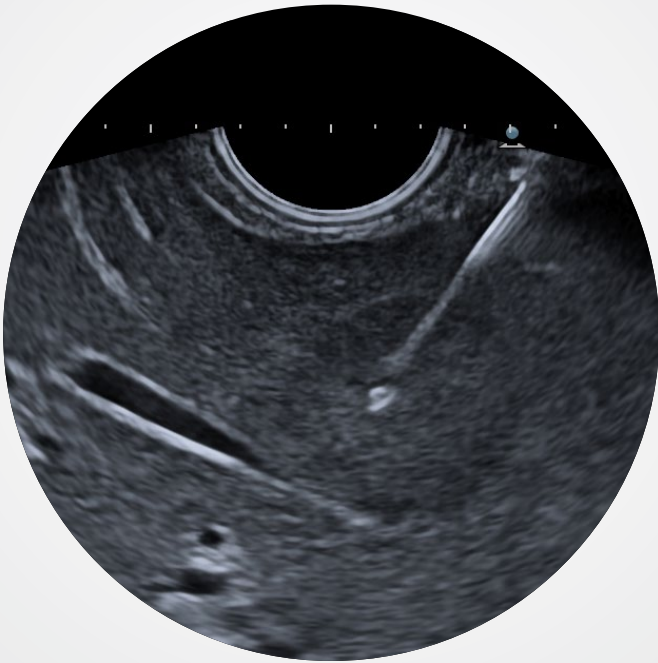
Enrich diagnostic findings.  
**The new way of seeing.**



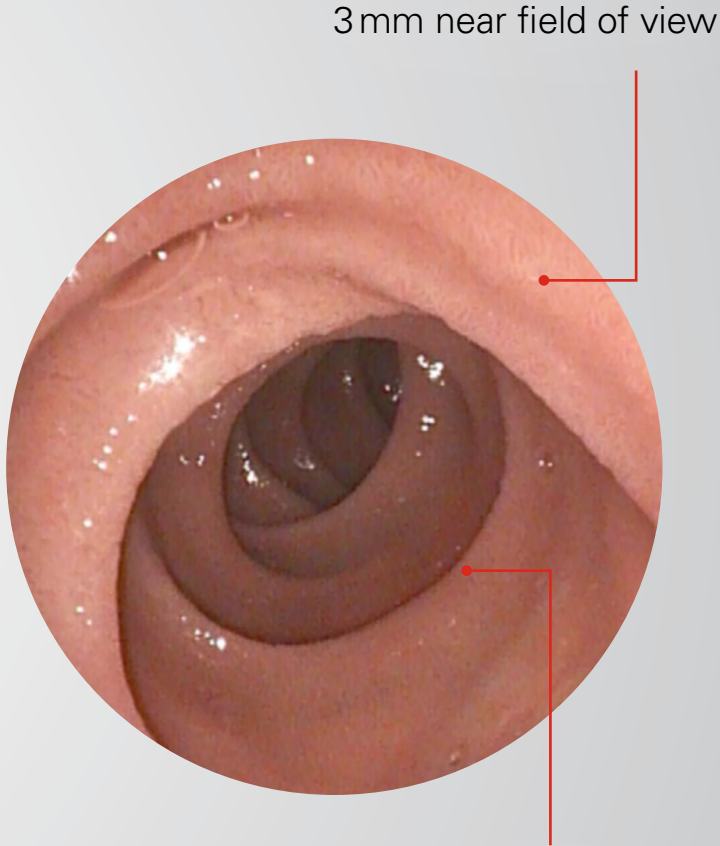
Improved diagnostic outcomes, and guidance on therapy thanks to greater detail, better delineation and superior penetration:



Improved spatial and contrast resolution together with depth penetration due to the the latest ultrasound probe crystal technology



EUS-FNA/FNB with clear needle visibility



Improved resolution due to new image sensor

# Enrich diagnostic findings. **The new way of seeing.**

**PENTAX**  
MEDICAL

Improved diagnostic outcomes and guidance on therapy thanks to greater detail, better delineation and superior penetration:



## **Broadband Harmonic Imaging**

*(High-Definition dynamic  
Tissue Harmonic Imaging)*

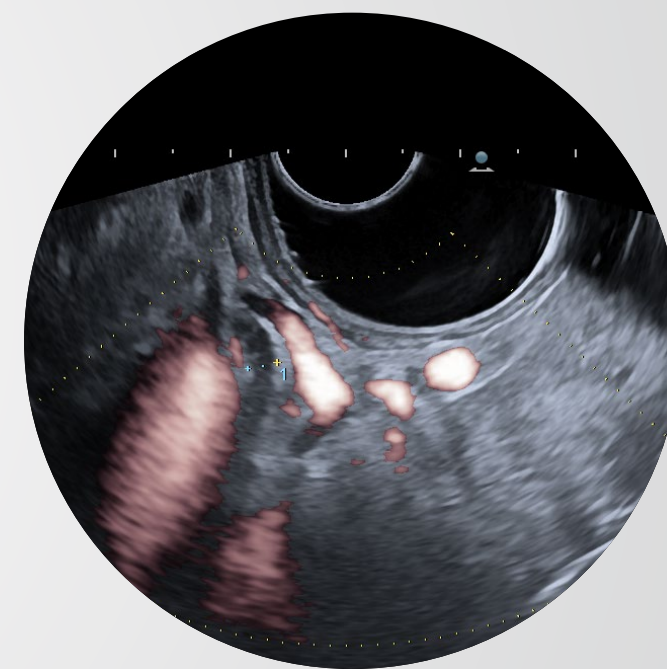
Optimal tissue differentiation  
with clear delineation of boundaries



## **Compound Imaging**

*(Real-time spatial and frequency image  
compounding)*

Improves image resolution with clear  
visualization of irregular borders, calcifi-  
cations and enhanced needle visibility



## **eFLOW/Fine Flow**

*(High-Resolution Flow  
Mapping Technology)*

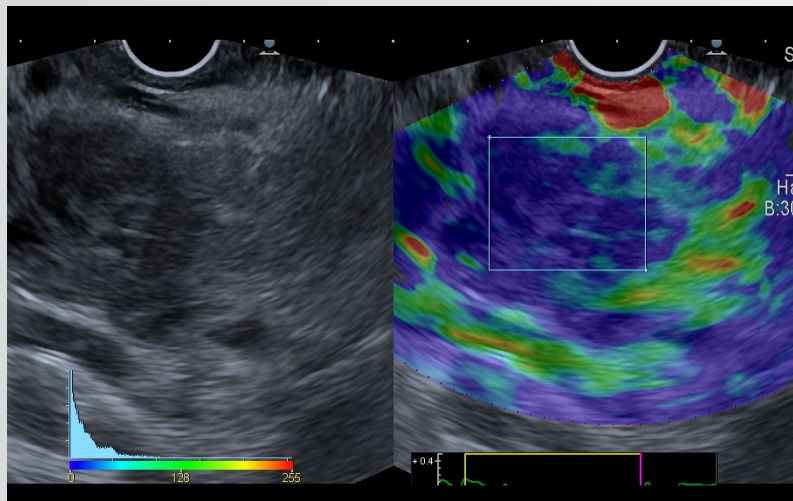
Accurately depicts blood flow  
dynamics, and helps vessel depiction  
during challenging EUS-FNA/FNB





# Enrich diagnostic findings. **The new way of seeing.**

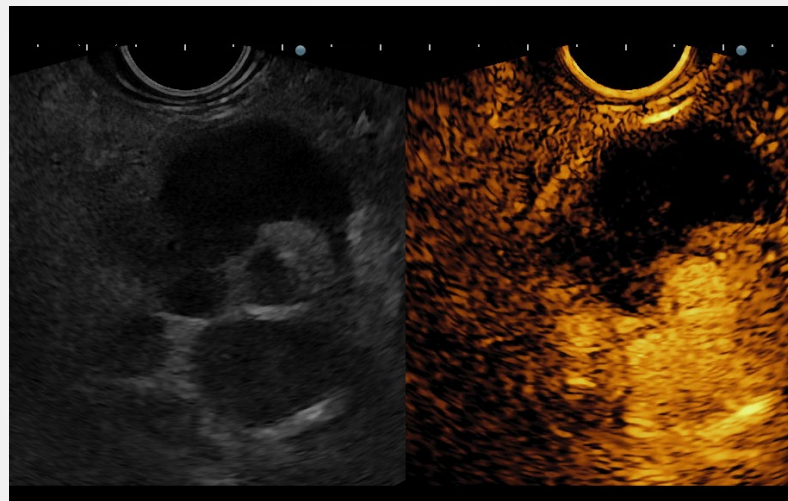
Improved diagnostic outcomes and guidance on therapy thanks to greater detail, better delineation and superior penetration:



## **Elastography (RTE)**

*(Real-Time Tissue Elastography)*

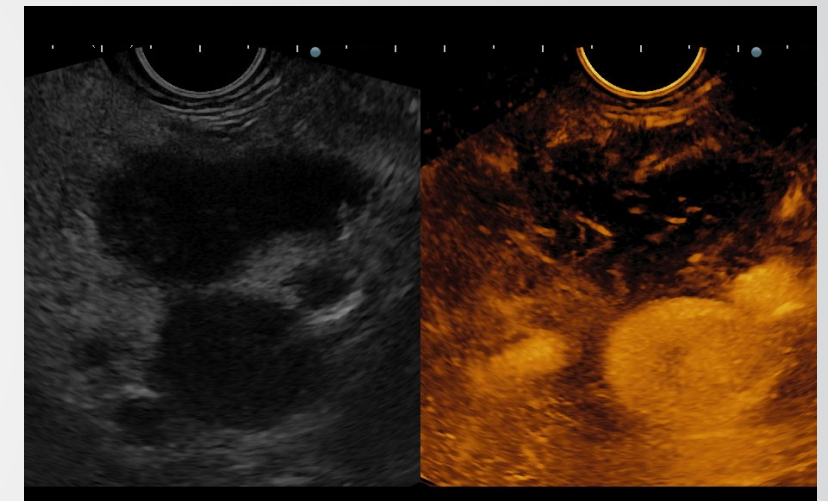
Aids characterization of focal lesions, lymph nodes, and improves targeting for EUS-FNA/FNB



## **Contrast Harmonic Imaging (CHI)**

*(Real-time display of Contrast Harmonic Imaging)*

CHI aids for differential diagnosis of focal lesions (cystic or solid lesions, particularly pancreatic) and monitoring of treatment response



## **Contrast Harmonic Imaging (CHI)**

*(Real-time display of Contrast Harmonic Imaging)*

Accumulation mode, within CHI, provides information of the target's vascular supply or parenchymal perfusion pattern and enables accurate lesion characterization



# Redefine therapy. The new way of treating.

**PENTAX**  
MEDICAL

Expanding therapeutic capabilities by enlarged 4.0 mm working channel to advance EUS-guided intervention while providing full control of the procedure:

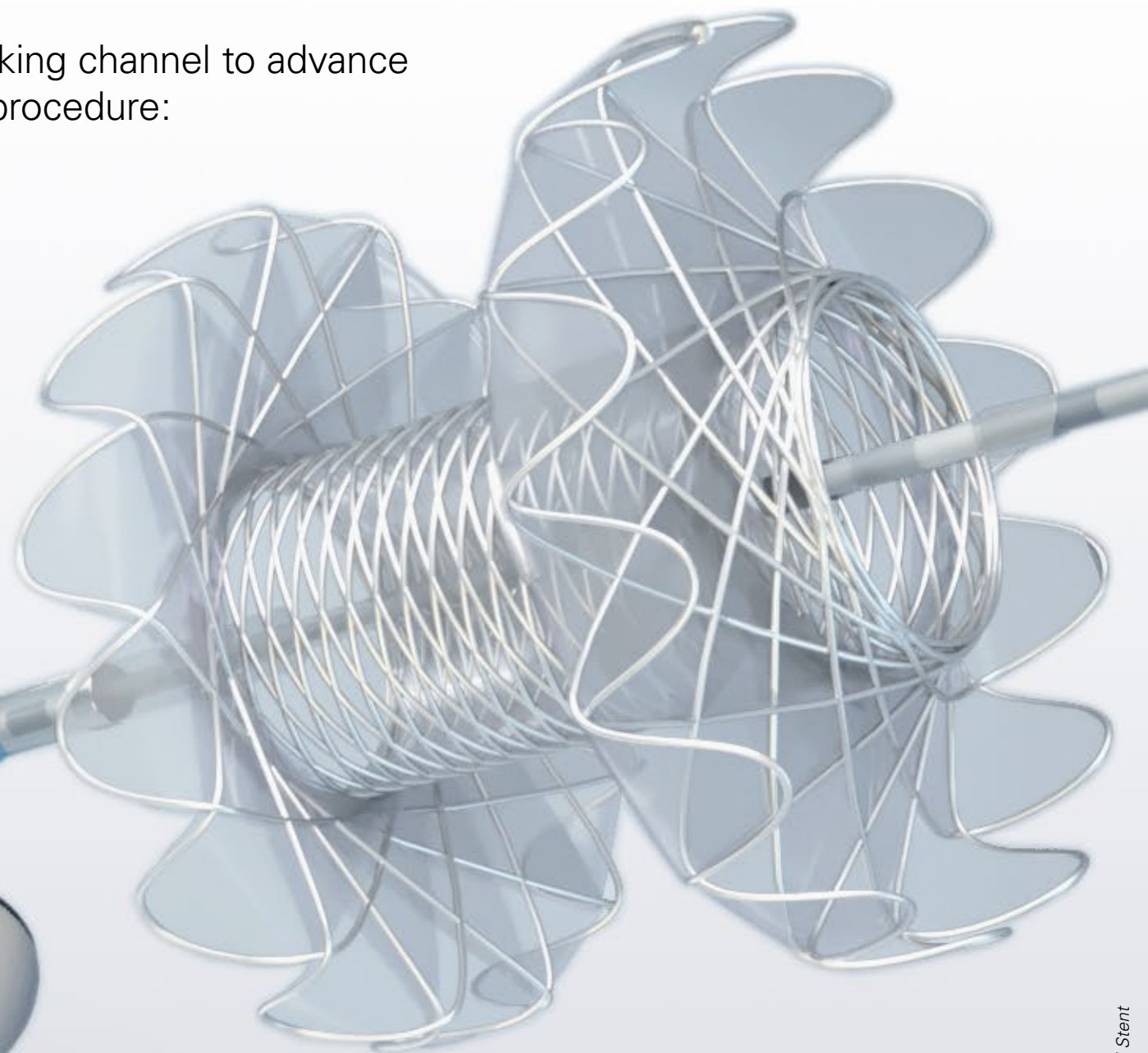


Optimized alignment of endoscopic view with ultrasound probe

A unique, enlarged 4.0 mm working channel



Redesigned elevator shape and optimal elevator movement





## PENTAX Medical hygiene commitment

PENTAX Medical is using innovative products, optimizing processes, and integrating feedback from the market to directly tackle patient safety and infection prevention. We work closely with experts for market insights to ensure that all products are directly based on this need.

The EUS-J10 line-up aims to reduce the risk of cross-contamination through endoscope design, validated consumables and optimized reprocessing:

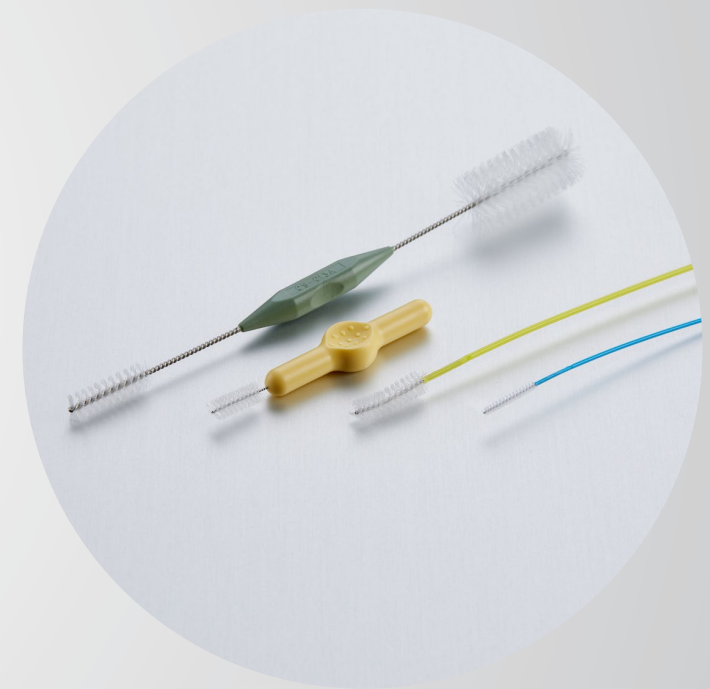


**Fewer reprocessing steps** due to:

- Sealed elevator wire channel
- Optimized elevator mechanism design



Newly designed **cleaning adapters** separating channels to ensure all channels are adequately reprocessed



- Dedicated **PROfile single-use cleaning brushes** designed and validated to meet PENTAX Medical's quality standards
- Brushable balloon suction channel



# Explore the EUS-J10 line-up: The complete solution.

**PENTAX**  
MEDICAL

**OPTIVISTA plus** –  
Further improved  
*in vivo* diagnosis for  
therapeutic guidance



OPTIVISTA plus+  
EPK-i7010

**Noblus** –  
Advanced versatile  
ultrasound system



Noblus

**ARIETTA V60** –  
The next generation of  
the compact mid-range  
systems



ARIETTA V60

**EPK-i5000**  
video processor –  
Operate i-scan quickly  
and comfortably



EPK-i5000

**DEFINA** system –  
Flexibility in a new light



DEFINA  
EPK-3000

**ARIETTA V70** –  
The next generation of  
high-end ultrasound  
systems



ARIETTA V70

**ARIETTA 850PX** –  
The next evolution in  
ultrasound, designed for  
high expectations



ARIETTA 850PX

Click for more information >

Click for more information >

For more details on the combinations allowed in your country, please check the IFU of the ultrasound endoscopes.

Noblus, ARIETTA V70, ARIETTA V60, ARIETTA 850PX, RTE are registered trademarks or trademarks of FUJIFILM Healthcare Corporation, Tokyo, Japan.





# Complementary ultrasound transducers

**PENTAX**  
MEDICAL

Wide range of ultrasound transducers extends  
the application for complementary imaging



## Ultrasound Transducers

A wide range of ultrasound transducers extends the application of gastro-intestinal ultrasound functionality, in particular:

- 360° Radial probe and biplane convex-linear endocavity probes for evaluation of anal sphincter complex, rectal wall tumor staging and pre-surgery planning
- Conventional abdominal and specialist biopsy probes for trans-abdominal ultrasound with possibility to perform complex interventional procedures (e.g. biopsies, drainage, ablation etc.)
- Linear probe for bowel wall assessment, and differential diagnosis in Crohn's disease
- Additional probes including intra-operative probes, complete the clinical application of the ultrasound platform even further



Overview details



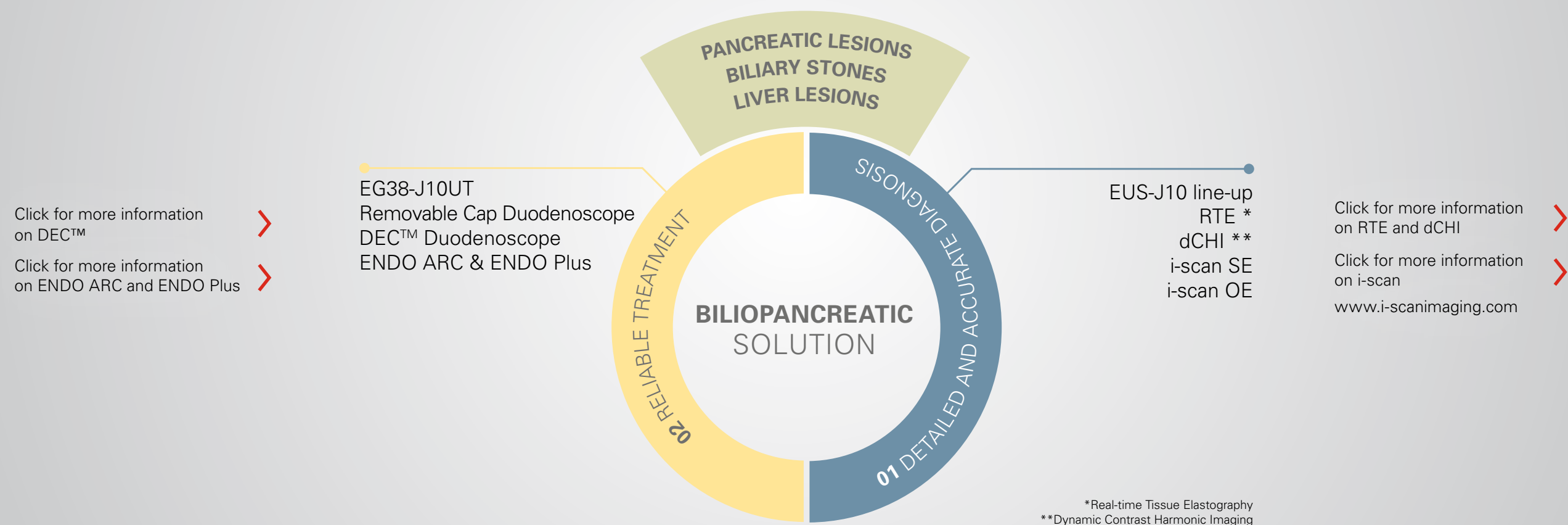
Ultrasound Video Gastrosopes	EG36-J10UR	EG34-J10U	EG38-J10UT
Direction of view	Forward	Forward oblique (45°)	Forward oblique (45°)
Field of view [°]	140	120	120
Depth of field [mm]	3–100	3–100	3–100
Tip angulation up/down [°]	150/70	160/130	160/130
Tip angulation right/left [°]	70/70	120/120	120/120
Distal end width [mm]	10.4	12.9	14.3
Insertion tube width [mm]	12.1	11.6	12.8
Minimum instrument channel width [mm]	2.4	2.8	4.0
Insertion portion working length [mm]	1,250	1,250	1,250
Total length [mm]	1,566	1,566	1,566
Frequency [MHz]	5–13	5–13	5–13
Scan method	Radial	Convex	Convex
Scan angle [°]	360	150	150

In the interest of technical progress, specifications may change without notice.



# Biliopancreatic solution

The PENTAX Medical Ultrasound Video Gastroscope EUS-J10 line-up in combination with ultrasound systems completes our biliopancreatic solution.

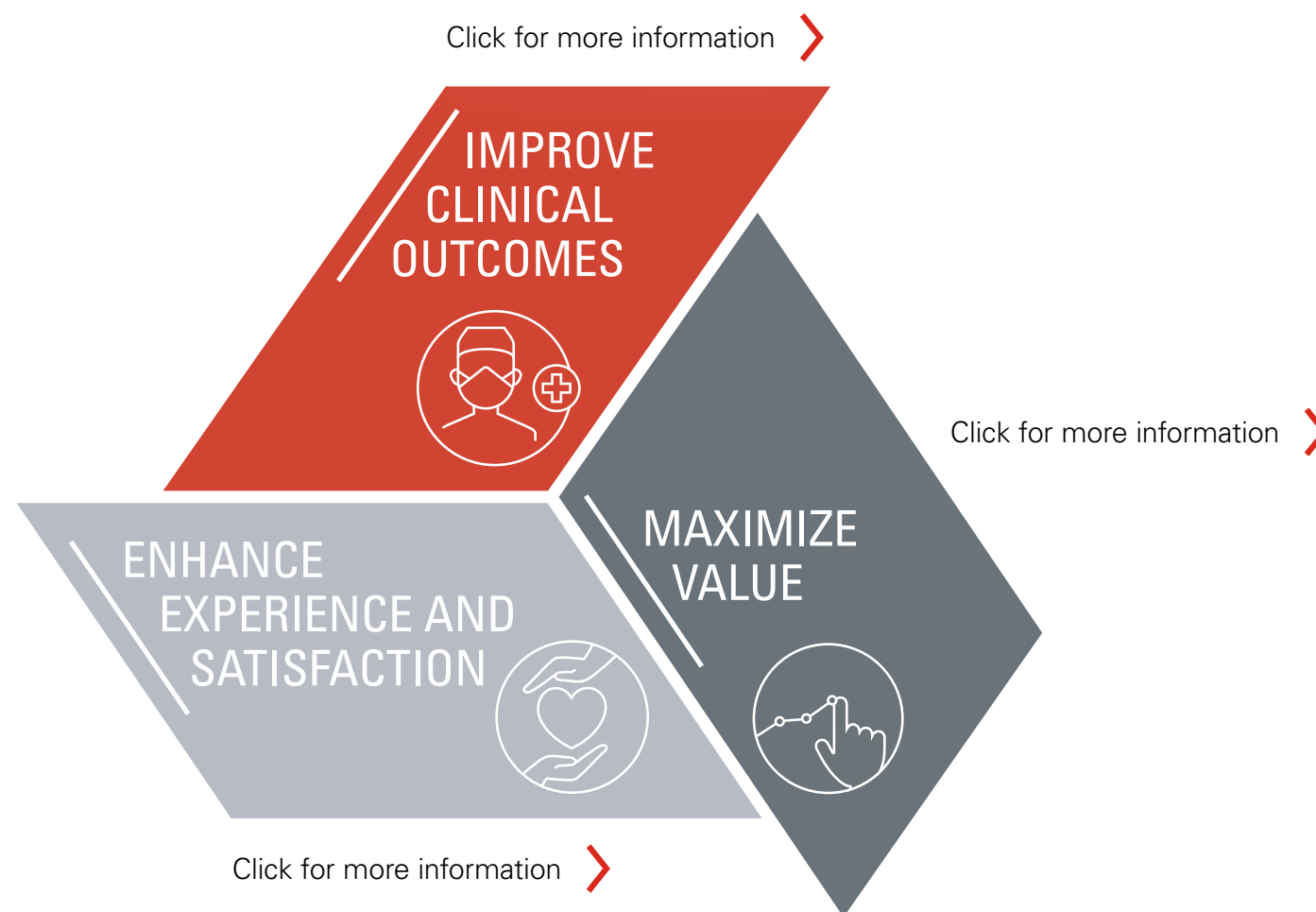


Find out more about our complete solutions offering



## PENTAX Medical's Triple Aim

Our **Triple Aim** program is designed to deliver on our commitment to support you and your healthcare organisation's wider objectives by providing programs, products and solutions to help you reach your goals.



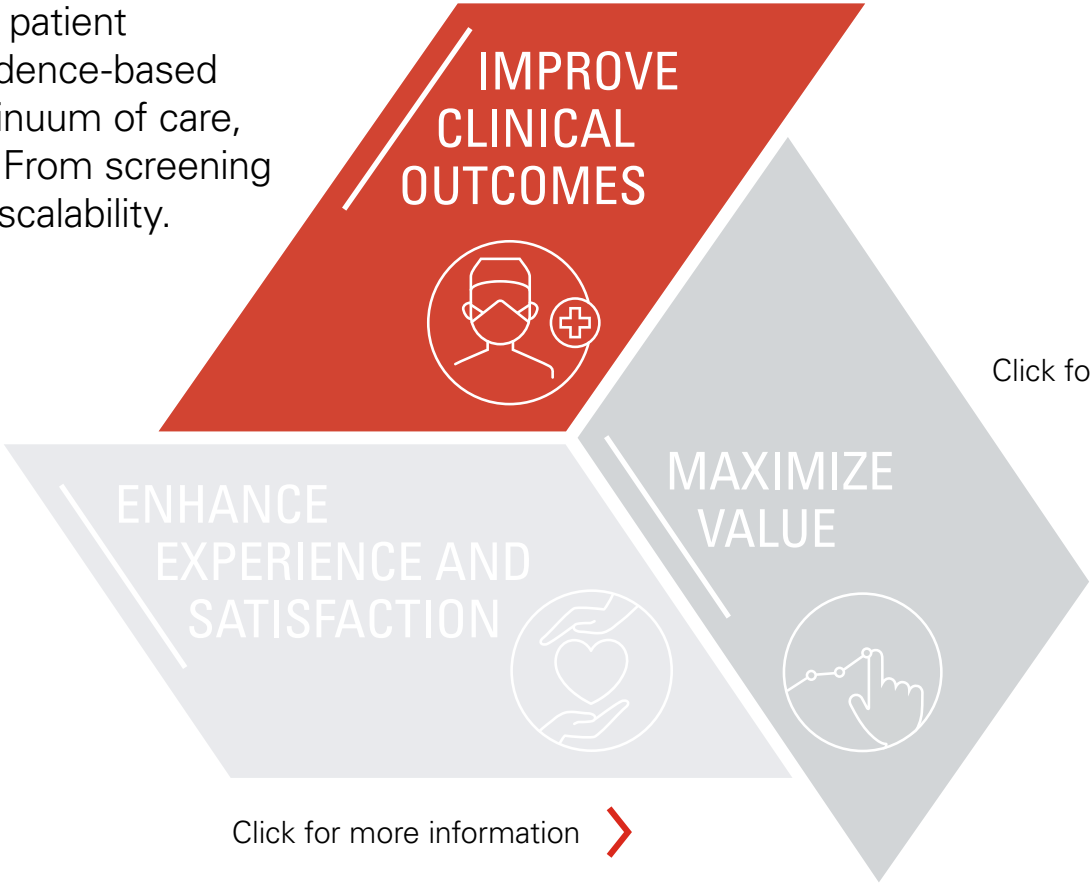
FIND OUT HOW  
**THE EUS-J10**  
LINE-UP  
SUPPORTS  
TRIPLE AIM





# PENTAX Medical's Triple Aim

**Enabling** you to improve patient outcomes by offering evidence-based solutions across the continuum of care, dedicated to your needs. From screening through therapy with full scalability.



Click for more information >

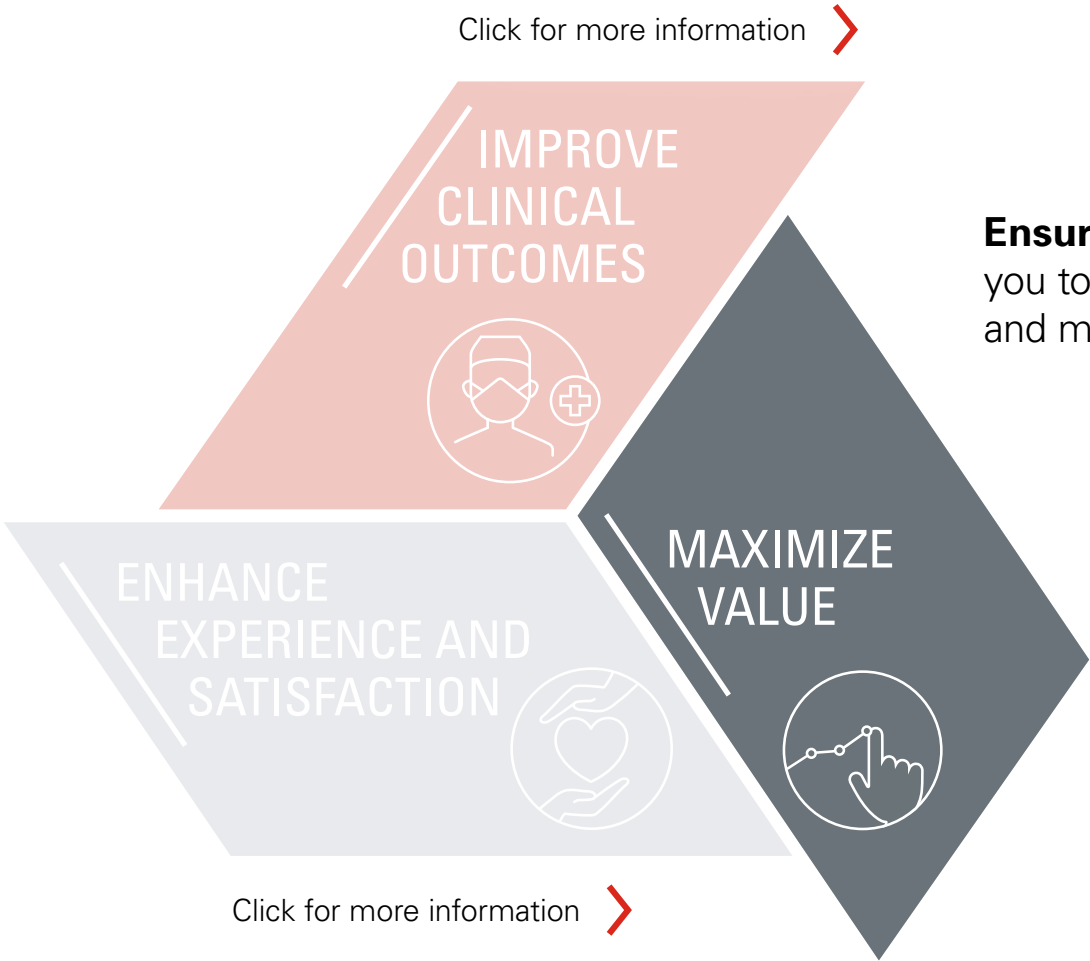
Click for more information >

FIND OUT HOW  
**THE EUS-J10**  
LINE-UP  
SUPPORTS  
TRIPLE AIM

# PENTAX Medical's Triple Aim



FIND OUT HOW  
**THE EUS-J10**  
LINE-UP  
SUPPORTS  
TRIPLE AIM



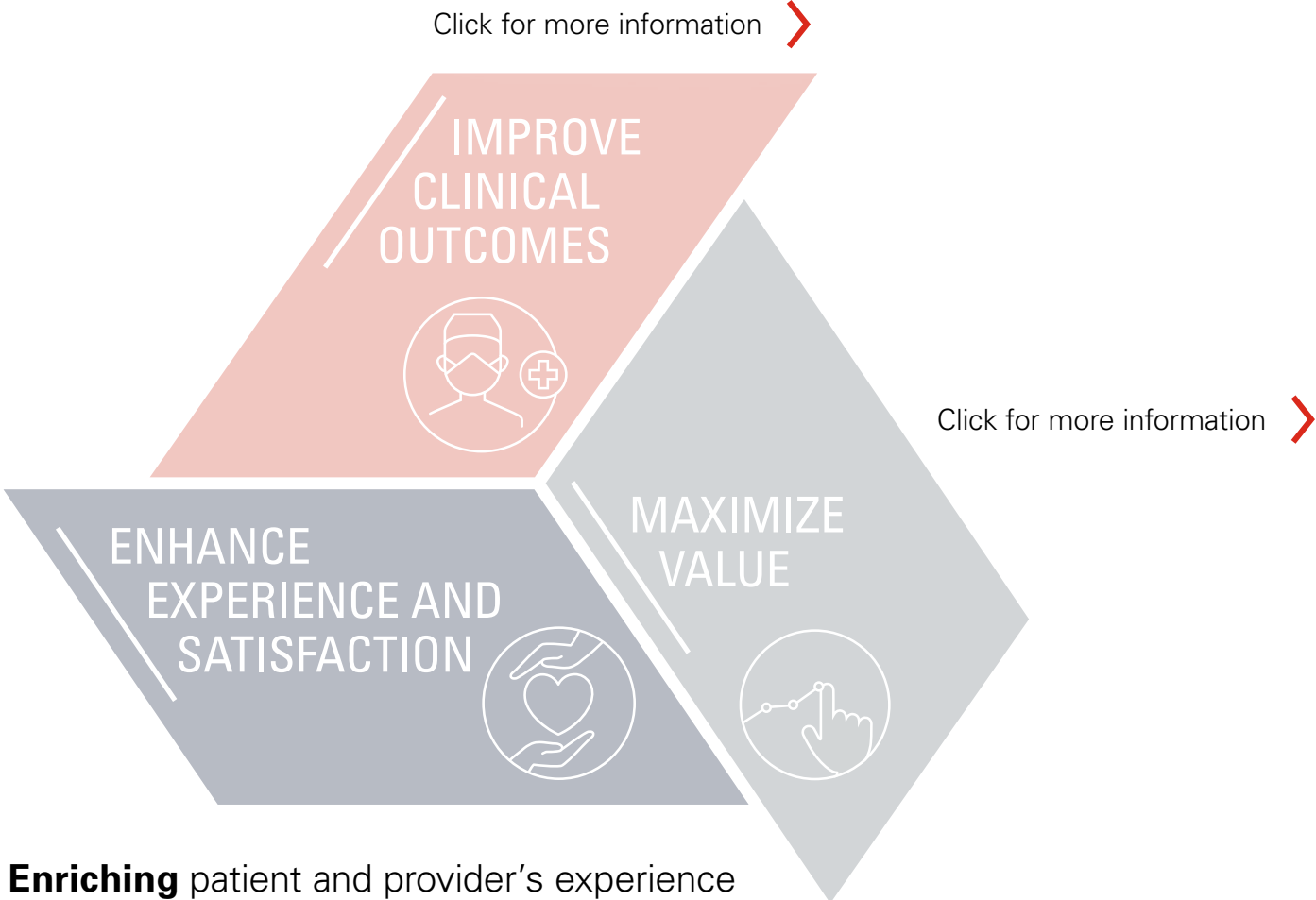
**Ensuring** value by enabling you to improve your efficiency and minimize healthcare costs.



# PENTAX Medical's Triple Aim

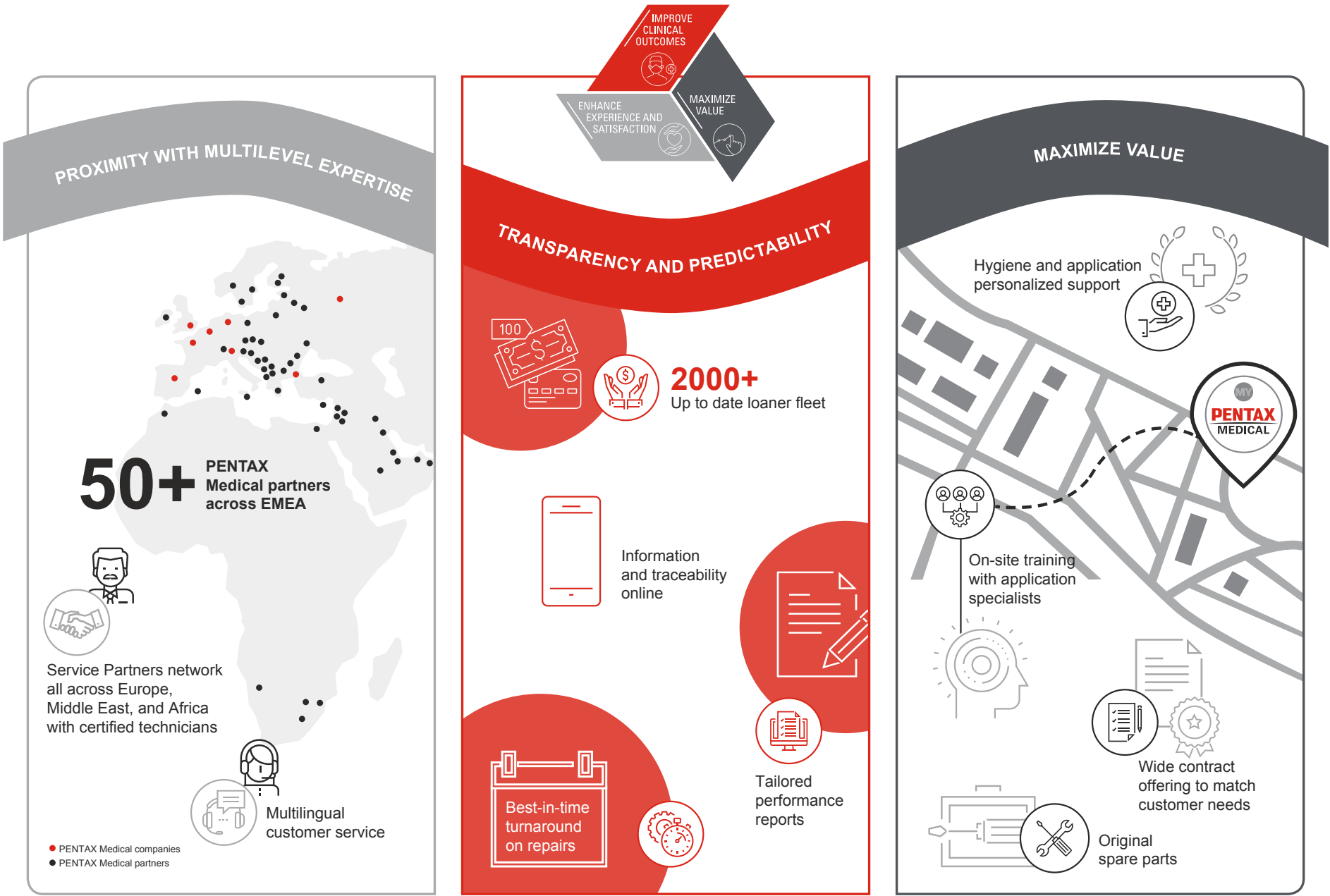


FIND OUT HOW  
**THE EUS-J10**  
LINE-UP  
SUPPORTS  
TRIPLE AIM



**Enriching** patient and provider's experience by empowering every member of your care team to achieve optimal outcomes through products, education and support.

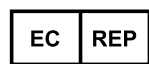
# Your needs shape our service



For PENTAX Medical Service, our partnership means your success.



6-10-1 Nishi-shinjuku  
Shinjuku-ku, Tokyo  
160-0023 Japan



**EMEA Headquarter  
Germany**

PENTAX Europe GmbH  
Julius-Vosseler-Straße 104 . 22527 Hamburg  
Tel.: +49 40 / 5 61 92 - 0 . Fax: +49 40 / 5 60 42 13  
E-mail: [info.emea@pentaxmedical.com](mailto:info.emea@pentaxmedical.com)  
[www.pentaxmedical.com](http://www.pentaxmedical.com)

TÜV Süd CE0123 • Medical device class: IIa • This product must be used only by healthcare professionals. Before use and for detailed product specifications, please refer to the instructions for use. In the interest of technical process, specifications may change without notice.

**PENTAX**  
**MEDICAL**  
*Excellence in Focus*