

HEMOSTASIS DEVICES



REDEFINING
endoscopic
hemostasis care

Table of Contents:

Product Name	Page Number
VIPER™ Hemoclip	1-2
RELIANCE™ Hemoclip	3
RELIANCE™ Reloadable Hemoclip	4
SMARTBAND™ Multi-Band Ligation System*	5-6
PADLOCK CLIP™ Defect Closure System	7-9
BIOVAC™ Direct Suction Device	10
Injection Therapy Portfolio	11-12

*FDA approved

HEMOSTASIS:

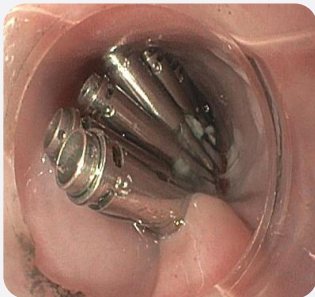
Through innovation and expansion of our therapeutic portfolio, we are proud to offer endoscopy devices to address a variety of **hemostasis situations and improve patient care.**

Offering the precision and retention required for endoscopic clipping

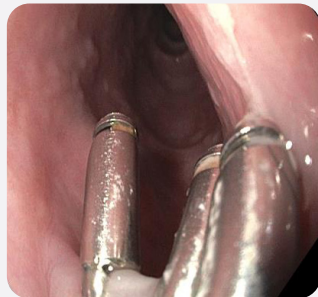
The **VIPER™ Hemoclip** is designed for endoscopic clip placement within the GI tract for the purpose of hemostasis, defect closure, endoscopic marking and anchoring.

KEY FEATURES & BENEFITS:

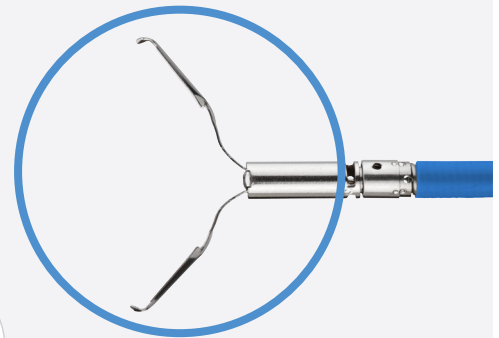
Available in 4 sizes, all offering a minimal tail length allowing for visualization and maneuverability when deploying multiple clips.



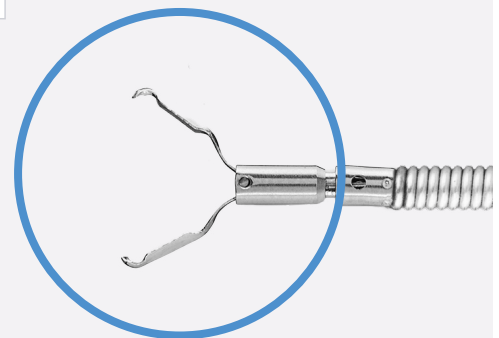
Six VIPER™ Hemoclips closing an esophageal POEM mucosal incision.



63 day follow up found majority of VIPER™ Hemoclips in place.



VIPER™ Hemoclip Coated



VIPER™ Hemoclip Uncoated



SCAN to view POEM closure performed by Dr. Torsten Beyna, Germany

MR conditional under static magnetic field of 1.5T/3.0T, maximum spatial field gradient of 2,000 gauss/cm and maximum MR system reported whole body averaged SAR of 2 W/kg. Reference instructions for Use for full details.

Providing 360-degree, one-to-one rotation



Features	Benefits	VIPER™ Hemoclip
Minimal tail length	Maneuverability when deploying additional clips	✓
Can be opened/closed multiple times	Facilitates positioning prior to deployment	✓
Design allows for smooth passage through the working channel	Aids in tortuous endoscope positions	✓
Provides audible and tactile feedback	Confirms deployment	✓
Available in coated and uncoated versions	Offering customers choice	✓

REMOVABLE:

Product Number	Description	Minimum Working Channel (mm)	Catheter Length (cm)	Deployed Length (mm)	Opening Width (mm)	Coated Sheath	Sterile	Units/Box
BX00711875	VIPER™ Hemoclip	2.8	230	12.5	11	Yes	Yes	10
BX00711877	VIPER™ Hemoclip	2.8	230	12.5	16	Yes	Yes	10
BX00711924	VIPER™ Hemoclip	2.8	230	12.5	9	Yes	Yes	10
BX00711925	VIPER™ Hemoclip	2.8	230	12.5	13	Yes	Yes	10

NON-REMOVABLE:

Product Number	Description	Minimum Working Channel (mm)	Catheter Length (cm)	Deployed Length (mm)	Opening Width (mm)	Coated Sheath	Sterile	Units/Box
BX00711922	VIPER™ Hemoclip	2.8	230	12.5	11	No	Yes	10
BX00711923	VIPER™ Hemoclip	2.8	230	12.5	16	No	Yes	10

RELIANCE™ Hemoclip

KEY FEATURES & BENEFITS:

- Offers ability to reposition the clip multiple times prior to deployment
- Features 360 degree, one to one rotation
- Provides tactile feedback on deployment
- Includes various jaw opening size
- Coated option offer removable capabilities



RELIANCE™ Hemoclip Uncoated 16mm

MR conditional under static magnetic field of 1.5T/3.0T, maximum spatial field gradient of 2,000 gauss/cm and maximum MR system reported whole body averaged SAR of 2 W/kg. Reference instructions for Use for full details.

Removable:

Product Number	Description	Minimum Working Channel (mm)	Catheter Length (cm)	Deployed Length (mm)	Opening Width (mm)	Coated Sheath	Handle Colour	Units/Box
EN10400	RELIANCE™ Hemoclip	2.8	230	12.5	11	Yes	Blue	5

Non-Removable:

Product Number	Description	Minimum Working Channel (mm)	Catheter Length (cm)	Deployed Length (mm)	Opening Width (mm)	Coated Sheath	Handle Colour	Units/Box
EN10400P	RELIANCE™ Hemoclip	2.8	230	12.5	11	No	Blue	10
EN10400P16	RELIANCE™ Hemoclip	2.8	230	12.5	16	No	Green	10

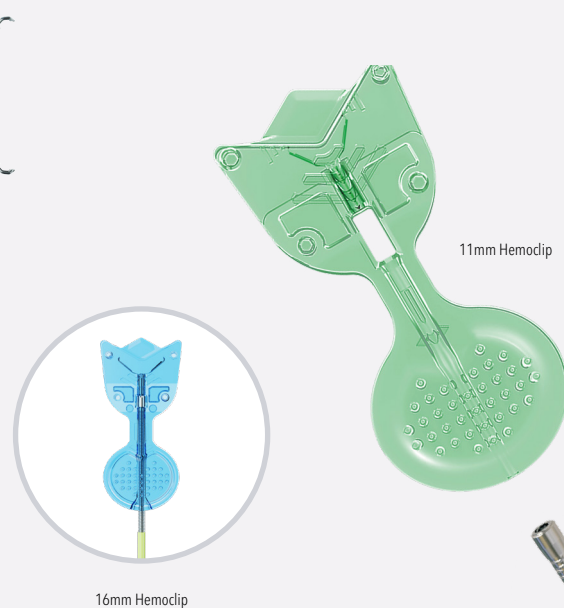
RELIANCE™ Reloadable Hemoclip

Precision clipping with the advantage of single-motion clip exchange. Reload fast and clip with confidence.

Reliable hemostasis, engineered for repeat deployment in single patient. Offered as preloaded clips with 25 cartridge packs in 11mm and 16mm interchangeably or as add on sets containing 1 or 4 clips in one size.

KEY FEATURES & BENEFITS:

- 1:1 Rotation for ideal positioning on target site
- Repositionable
- Easy and fast reloading technique
- Interchange between 11mm and 16mm clips
- One device - multiple deployments
- Decrease medical waste in procedures which require multiple clip placements



MR conditional under static magnetic field of 1.5T/3.0T, maximum spatial field gradient of 2,000 gauss/cm and maximum MR system reported whole body averaged SAR of 2 W/kg. Reference instructions for Use for full details.

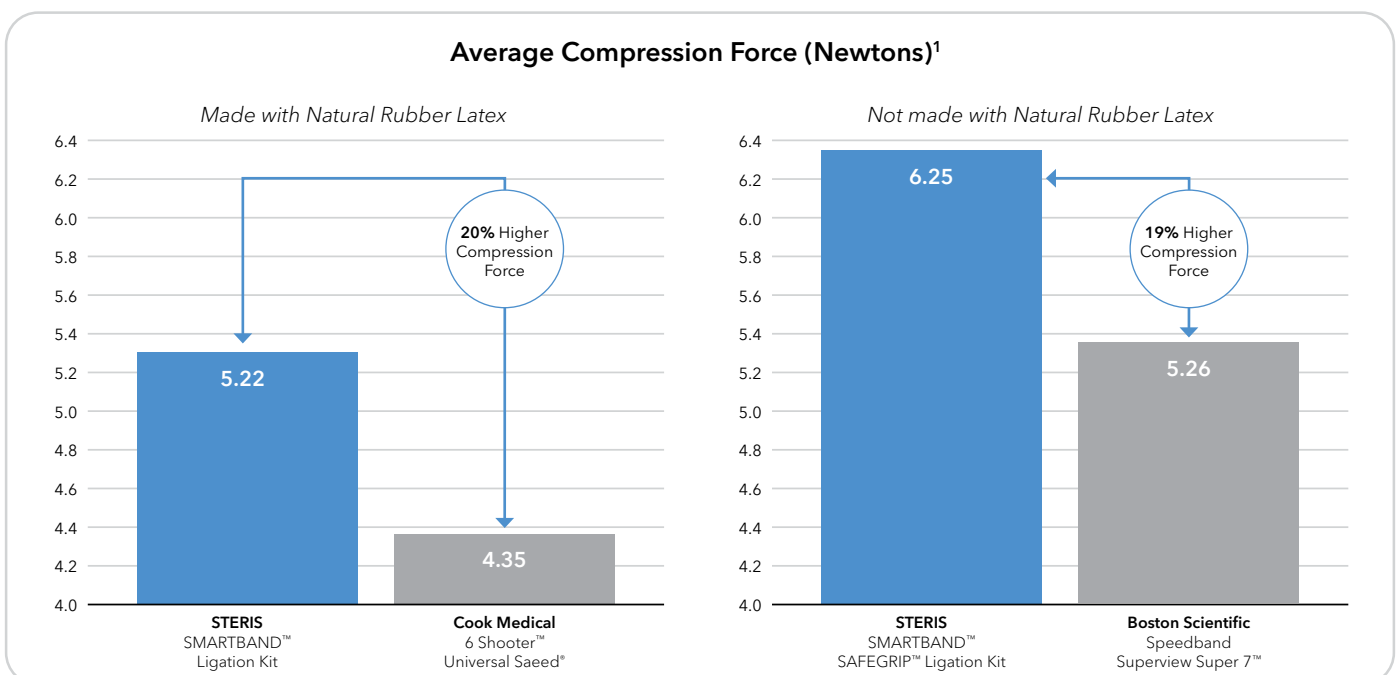
Reloadable Hemoclip

Product Number	Description	Min Working Channel (mm)	Catheter Length (cm)	Deployed Length (mm)	Opening Width (mm)	Units/Box
BX00711933	RELIANCE™ Preloaded Applicator	2.8	230	12.8	11	10
BX00711934	RELIANCE™ Preloaded Applicator	2.8	230	14.3	16	10
BX00711935	RELIANCE™ Cartridges (Green)	2.8	-	12.8	11	25
BX00711936	RELIANCE™ Cartridges (Blue)	2.8	-	14.3	16	25
BX00711937	RELIANCE™ Preloaded Applicator + 1 clip	2.8	230	12.8	11	10
BX00711938	RELIANCE™ Preloaded Applicator + 1 clip	2.8	230	14.3	16	10
BX00711939	RELIANCE™ Preloaded Applicator + 4 clips	2.8	230	12.8	11	10
BX00711940	RELIANCE™ Preloaded Applicator + 4 clips	2.8	230	14.3	16	10

SMARTBAND™ Multi-Band Ligation System

The **SMARTBAND Multi-Band Ligation System** is used to endoscopically ligate esophageal varices at or above the gastroesophageal junction and to ligate internal hemorrhoids.

THE LIGATION BANDS ARE DESIGNED TO DELIVER MAXIMUM TISSUE COMPRESSION.



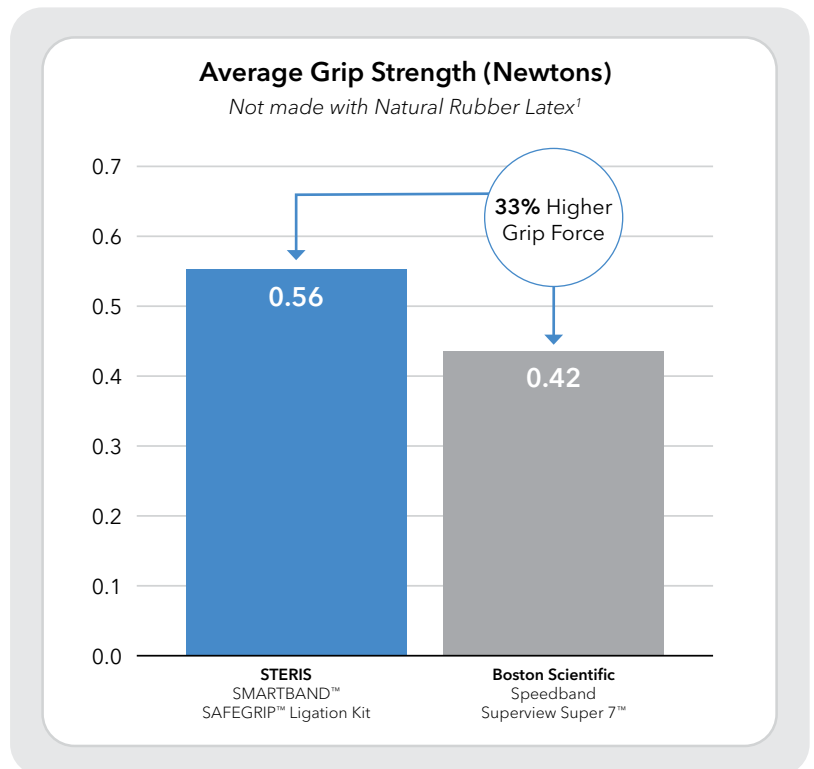
1. Third party testing data on file.

SMARTBAND™ Multi-Band Ligation System¹

The **SMARTBAND SAFEGRIP Bands** are designed with “tire treads” to deliver maximum tissue gripping strength.



“Tire tread” ridges



SMARTBAND™ Multi-Band Ligation System			
Product Number	Description	Endoscope Diameter Compatibility (mm)	Unit of Measure
SLK6*	SMARTBAND™ Multi-Band Ligation kit - Components: Ligation Handle with Universal Connector, Pentax Adaptor, and Barrel with 6 Bands	8.6 - 11.6	EA
SLK6LF**	SMARTBAND™ SAFEGRIP™ Multi-Band Ligation Kit - Components: Ligation Handle with Universal Connector, Pentax Adaptor, and Barrel with 6 Bands	8.6 - 11.6	EA
SLP6*	SMARTBAND™ Multi-Band Ligation pack - Components: Deployment Cord with Barrel of 6 Bands	8.6 - 11.6	EA
SLP6LF**	SMARTBAND™ SAFEGRIP™ Multi-Band Ligation Pack - Components: Deployment Cord with Barrel of 6 Bands	8.6 - 11.6	EA

*This product is made with natural rubber latex.

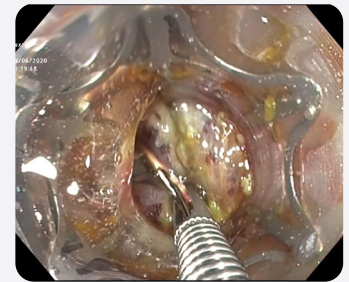
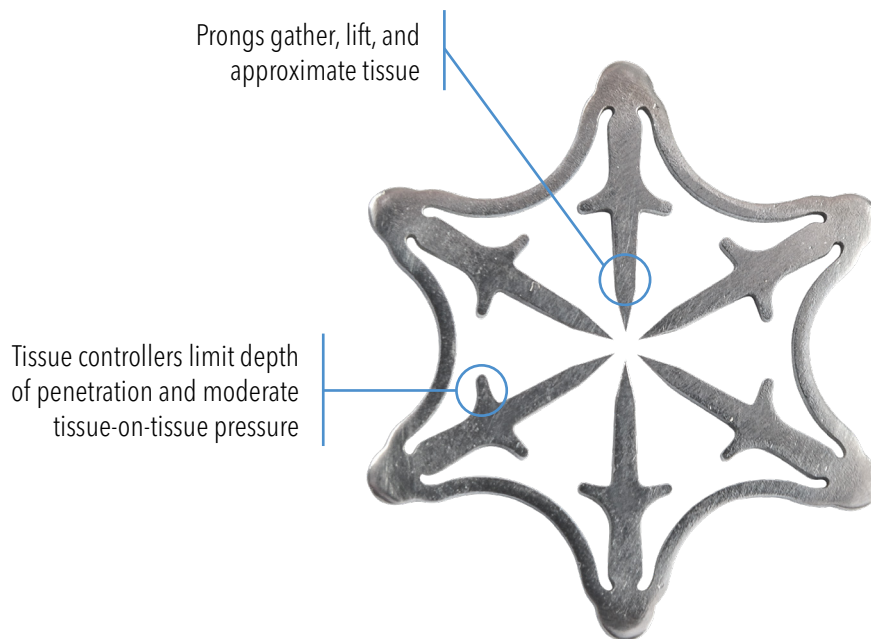
**This product is not made with natural rubber latex.

¹FDA approved

PADLOCK CLIP™ Defect Closure System

The **PADLOCK CLIP Defect Closure System** facilitates effective full circumferential tissue closure.

- *A pre-loaded, self-grasping clip designed to encircle, lift, close, and potentiate the healing of tissue defects*
- *Attachment to the outside of the endoscope*
- *Open and free instrument channel for endoscope suction*
- *“Push of the thumb” deployment*
- *May be used with the RAPTOR™ Grasping Device to aid tissue recruitment*



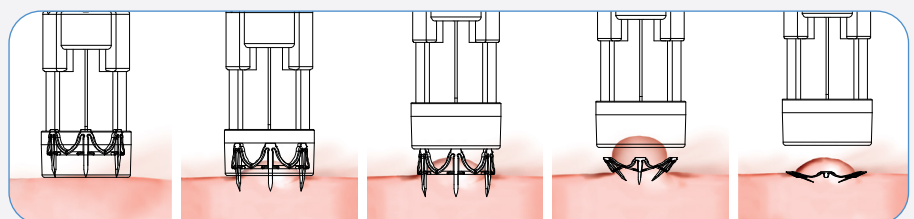
PADLOCK CLIP™ System used with RAPTOR™ Grasping Device to recruit tissue into tissue chamber.



PADLOCK CLIP™ System deployed on colonic EMR site.



The PADLOCK CLIP™ Defect Closure System is made of **nitinol alloy** and lays flat against the tissue, offering low profile radial compression.



INDICATIONS FOR USE

The **PADLOCK CLIP Defect Closure System** is indicated for clip placement within the gastrointestinal (GI) tract for the purpose of: Endoscopic marking of lesions, Closure of GI tract luminal perforations <20mm that can be treated conservatively, and Hemostasis for: Mucosal/Submucosal defects, Bleeding Ulcers, Arteries <2mm, Polyps <1.5cm in diameter, or Diverticula in the Colon.

HEMOSTASIS CASES:

- **Rebleeding gastric ulcer** previously treated with epinephrine injection and bipolar cautery. Treated with PADLOCK CLIP System with no further rebleeding.²
- **Bleeding EMR site** successfully treated by the PADLOCK CLIP System and showed persistence of the PADLOCK CLIP System at 3 months follow-up.¹
- **Bleeding rectal ulcer** treated by the PADLOCK CLIP System, resulting in durable hemostasis.¹ Previous unsuccessful treatments included endoclipping and injective therapy.

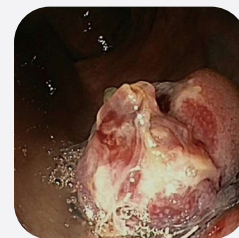
Rebleeding gastric ulcer



Bleeding EMR site



Bleeding rectal ulcer



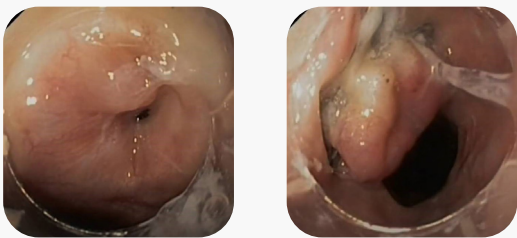
1. Armellini E, Crinò SF, Orsello M, Ballarè M, Tari R, Saettone S, Montino F, Occhipinti P. Novel endoscopic over-the-scope clip system. World J Gastroenterol 2015; 21(48): 13587-13592.

2. Dr. Mark Prince: "PADLOCK CLIP Defect Closure System - Closure of a large gastric ulcer." Case Study 761675A - STERIS.

3. Dr. David Diehl: "PADLOCK CLIP Defect Closure System - Endoscopic closure of an accidental esophageal perforation during an EMR procedure." Case Study 761685A - STERIS.

CASE EXAMPLES

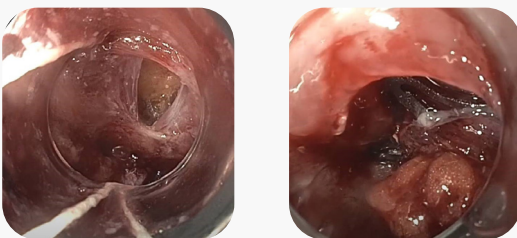
FISTULA AND LEAKS:



FISTULA AND LEAK CASES:

- **Tracheo-esophageal fistula** closure with the PADLOCK CLIP System. Previous unsuccessful treatments included surgery, salivary bypass stenting, and endoscopic clipping.¹

PERFORATIONS:



PERFORATION CASES:

- **Esophageal perforation closure.** Perforation occurred during band EMR procedure. Patient was in good condition following the procedure.²



SCAN CODE to view
Dr. Diehl case video

PADLOCK CLIP™ Defect Closure System

Product Number	Description	Length (cm)	Endoscope Distal Tip Diameter (mm)	Tissue Chamber Depth (mm)	Tissue Chamber I.D. (mm)	Housing O.D. (mm)	Units/Box
C910001	PADLOCK CLIP™ Defect Closure System	177	9.5-11	10	11	16	1
C913131*	PADLOCK CLIP™ PRO-SELECT™ Defect Closure System	177	11.3, 12.0, 12.5, 13.0, 13.5, 14.0	4, 8, 11, 13, 15, 19	11	19	1

* Ability to adjust tissue chamber depth based on scope diameter.

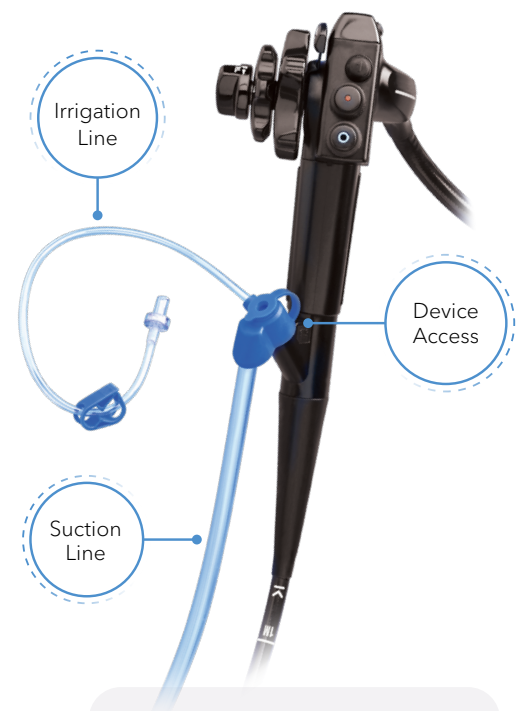
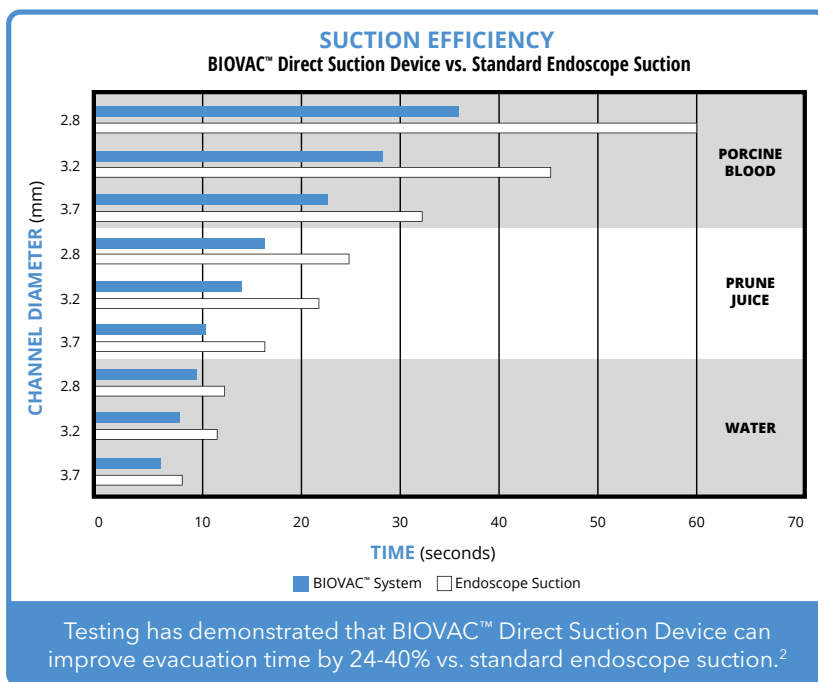
1. Armellini E, Crinò SF, Orsello M, Ballarè M, Tari R, Saettone S, Montino F, Occhipinti P. Novel endoscopic over-the-scope clip system. World J Gastroenterol 2015; 21(48): 13587-13592.
2. Dr. David Diehl: "PADLOCK CLIP Defect Closure System - Endoscopic closure of an accidental esophageal perforation during an EMR procedure." Case Study 761685A - STERIS.

BIOVAC™ Direct Suction Device

The **BIOVAC Direct Suction Device** is designed to suction hard-to-remove, viscous materials, like gelatinous blood and stringy clots¹, which may otherwise clog the control head of the endoscope. It allows for direct visualization during cleansing and evacuation by empowering the endoscope's own suction capabilities.

The BIOVAC Direct Suction Device offers...

- Suction capabilities, facilitating increased volume¹ and quick, powerful evacuation
- Instrument access, enabling the clinician to utilize suction capabilities as well as provide therapeutic treatment via the accessory channel
- Assistance in dealing with GI bleeds, colonic decompression, poor prep or retained residual food cases



WHITE PAPER:
"Can Endoscopic Suctioning Capabilities Be Improved?" states that there is a 24-40% reduction in evacuation time when using the BIOVAC™ Device. Scan QR code to view complete white paper.

BIOVAC™ Direct Suction Device					
Product Number	Description	Scope Compatibility	Device Access	Y-Port	Units/Box
BX00711511	BIOVAC™ Direct Suction Device	Pentax	Yes	no	5
BX00711512	BIOVAC™ Direct Suction Device	Olympus/Fujifilm*	Yes	no	5
BX00711513	BIOVAC™ Direct Suction Device	Olympus/Fujifilm*	Yes	Yes	5

* G5 Series or newer.

1. The size of particles and volume of liquid suctioned is limited to the endoscope's channel size.
 2. Data on file at STERIS.

INJECTION THERAPY DEVICES

STERIS offers a complete portfolio of dependable options to support your injection needs - from saline assisted polypectomy, esophageal varices, ulcers, and tattooing.

FEATURES	BENEFITS	CARR-LOCKE INJECTION NEEDLE	ARTICULATOR™ INJECTION NEEDLE	FASTFLO™ SCLEROTHERAPY NEEDLE
Teflon coated spring sheath and pre-load with stop at distal end	<ul style="list-style-type: none"> Helps to ensure consistent and full length needle projection every time Allows for smooth insertion down endoscope channel 	✓		
Stainless steel spring sheath	<ul style="list-style-type: none"> Minimizes sheath kinking especially during challenging procedures 	✓	✓	
Large inner diameter to facilitate injection of viscous solutions	<ul style="list-style-type: none"> Allows for high flow rate and low injection force during use 			✓
Smooth distal metal hub	<ul style="list-style-type: none"> Controls depth of needle insertion; reduces the risk of needle perforations Aids in tamponade 	✓	✓	✓
Luer lock, spring loaded handle	<ul style="list-style-type: none"> Automatically retracts needle to reduce risk of inadvertent needle sticks and/or scope damage 	✓	✓	
Requires less than 1cc of fluid to prime (most needles require 1.5-2.0cc)	<ul style="list-style-type: none"> More cost effective, particularly when using costly injection agents 	✓	✓	



ARTICULATOR™ Injection Needle



CARR-LOCKE Injection Needle



NEW PRODUCT
FASTFLO™ Sclerotherapy Needle

INJECTION NEEDLES						
Product Number	Description	Sheath Diameter (mm)	Length (cm)	Needle Projection (mm)	Needle Gauge	Units/Box
BX00711807	ARTICULATOR™ Injection Needle	2.5	230	5	25	5
BX00711808*	ARTICULATOR™ Injection Needle	2.5	350	5	25	5
BX00711810	ARTICULATOR™ Injection Needle	2.5	230	5	25	10
BX00711811	CARR-LOCKE Injection Needle	2.5	230	5	25	5
BX00711812	CARR-LOCKE Injection Needle	2.5	230	5	23	5
BX00711813	CARR-LOCKE Injection Needle (Pentax compatible)	2.5	230	5	25	5
BX00711814	CARR-LOCKE Injection Needle	2.5	230	4	23	5
BX00711822	CARR-LOCKE Injection Needle	1.8	230	5	25	5
BX00711823	CARR-LOCKE Injection Needle	2.5	230	5	25	10
BX00711824	CARR-LOCKE Injection Needle	2.5	230	5	25	10
BX00714000	FASTFLO™ Sclerotherapy Needle	2.4	230	4	21	10
BX00714001	FASTFLO™ Sclerotherapy Needle	2.4	230	4	23	10
BX00714002	FASTFLO™ Sclerotherapy Needle	2.4	230	4	25	10
BX00714004	FASTFLO™ Sclerotherapy Needle	2.4	230	6	23	10

* BX00711808 does not have the spring-loaded handle.

INJECTION THERAPY DEVICES

Ergonomically designed handle to assist with handling and deployment.

KEY FEATURES & BENEFITS:

- *Compatible with a 2.8mm working channel*
- *Suitable for injecting viscose solutions to support mucosal lifting*
- *Provides tactile feedback on needle release*



Injection Needle

Injection Needles						
Product Number	Description	Sheath Dia (mm)	Length (cm)	Needle Projection (mm)	Needle Gauge	Units/Box
EN10170A	Injection Needle	2.4	230	4	23	10
EN10171A	Injection Needle	2.4	230	5	23	10
EN10172A	Injection Needle	2.4	230	6	23	10

