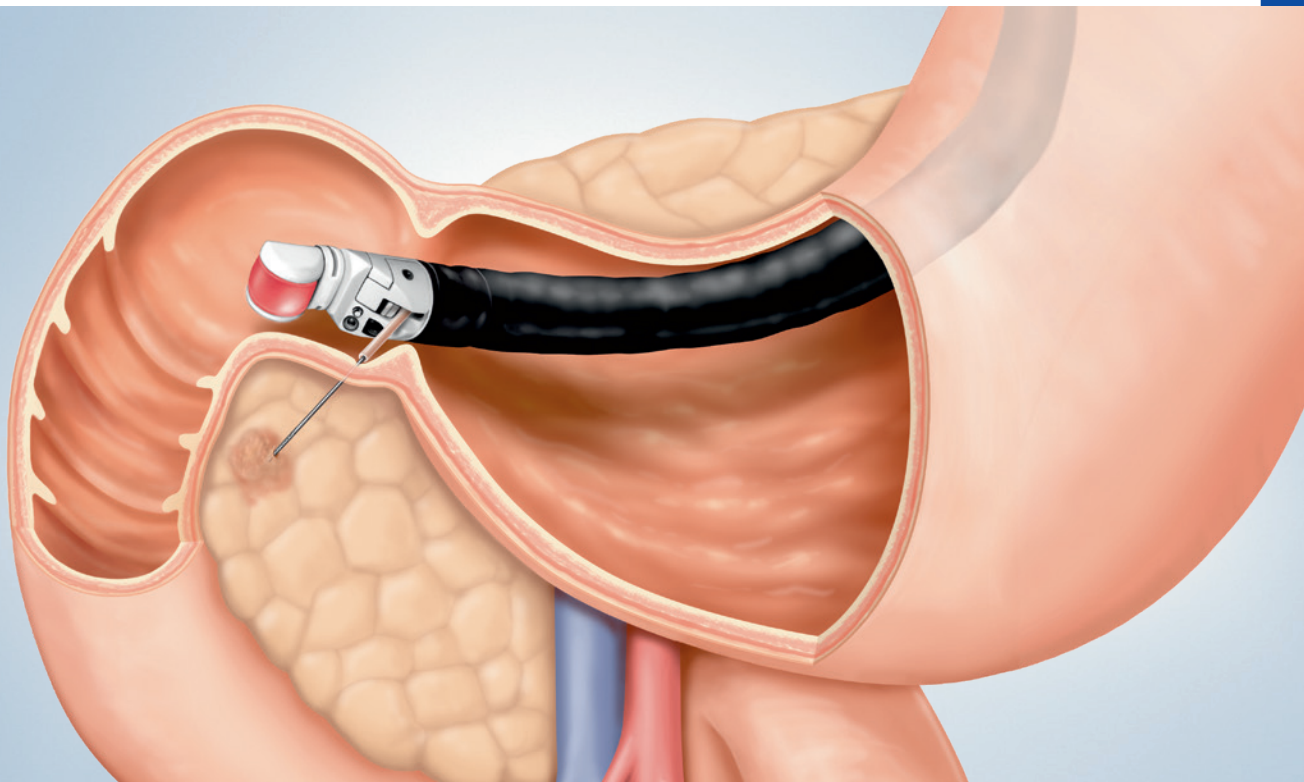


# Endoscopic Ultrasound

**EUS Diagnostics and Therapeutics**

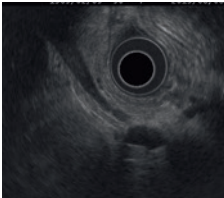


## EUS DIAGNOSTICS AND THERAPEUTICS

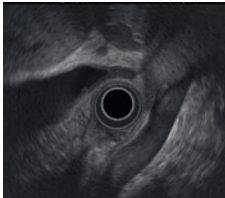
### Precise EUS Diagnosis: A Compact Ultrasound Processor Dedicated to EUS Applications, EUS Scopes with Outstanding Maneuverability and a Comprehensive Variety of EUS Needles.

The **EU-ME2 Premier Plus** is a high-quality, compact ultrasound processor for use with Olympus endoscopic and endobronchial ultrasound equipment. Various new features help to explore the future of endosonography and bring real clarity to your EUS procedures.

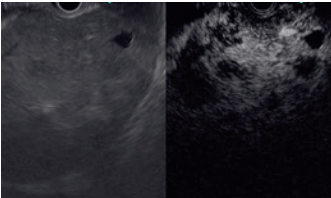
- **Improved B-mode:** The improved B-mode image quality supports the localization of tumors and more accurate identification of tissue properties and boundaries.
- **Tissue Harmonic Echo (THE):** The potential advantages of harmonic imaging include improved resolution, an improved signal-to-noise ratio, and fewer artefacts.
- **Contrast Harmonic EUS (CH-EUS)\*:** Using technology designed to depict higher harmonics, the CH-EUS mode is expected to help realize enhanced sensitivity to tumors and other abnormal growths.
- **Elastography:** An advanced form of ultrasound, elastography displays the relative stiffness of tissues by taking advantage of the deformation caused by the compression or vibrations generated by the heartbeat or vascular pulsations.



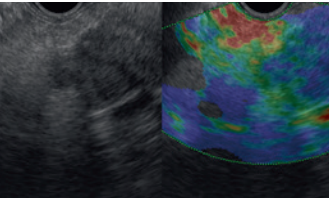
B-mode.



THE-R.



Contrast Harmonic EUS (CH-EUS).



Elastography.



12839

EVIS EUS

\* Regulations and usage of ultrasound contrast agents vary according to the country where they are used and the type of agents. Please use the ultrasound contrast medium according to the instructions provided with the products.

Available models: EU-ME2, EU-ME2 Premier, EU-ME2 Premier Plus

## EUS SCOPES

### A Complete EUS Scope Lineup – Each Scope Is a High-Precision Instrument Helping You Find the Right Diagnosis.

- The new **GF-UE190\*** is an electronic radial-scanning scope with a 360° ultrasound view with advanced new features. It offers impressive and flexible performance with greater safety and enhanced ease of use, complemented by improved ultrasound and endoscopic image quality.
- Carefully redesigned to improve insertion and maneuverability for increased safety and patient comfort.
  - Increased penetration depth and higher resolution for improved ultrasound images.
  - Unique D-Cut for easy balloon removal and detachable ultrasound cable for ease of handling.

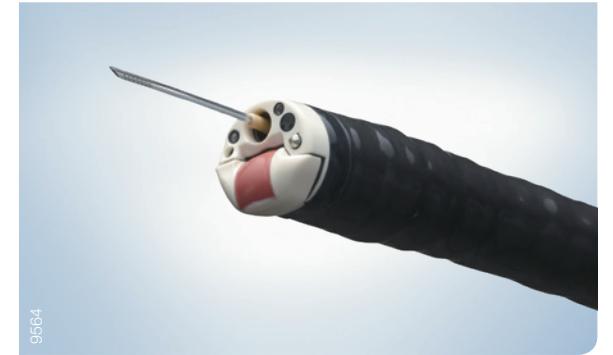


- The **GF-UCT180** delivers high-quality ultrasound images with greater B-mode imaging depth, safe device control through the round transducer design and a remarkably short, rigid distal end.
- Wide 180° ultrasonic view.
  - 3.7 mm instrument channel and optimized forceps elevator to ensure reliable control.
  - Ideal for EUS-guided FNA.



The **TGF-UC180J** forward-viewing scope delivers exceptional maneuverability and control ensured by the short, rigid portion, straight channel and wide 180° angulation capability.

- Allows a wide variety of therapeutic and FNA applications.
- Extremely short distal end and wide angulation.
- Straight channel port for better control of EndoTherapy devices.



### Wide Selection of Ultrasonic Miniature Probes

The MAJ-1720 probe-driving unit has been designed to work with the wide selection of ultrasonic probes offered by Olympus. Available in a variety of frequencies, outer diameters and tip designs, any one of these can be combined with the MAJ-1720 and your endoscope to match the specific requirements of any given procedure, including:

- Intraductal ultrasonography (IDUS).
- Dual-plane reconstruction (DPR).
- GuideSheath procedures.



\* Available soon. Please contact your Olympus representative to check availability in your region.

## EUS-FNA AND -FNB NEEDLES

### Exceptional Flexibility for Smooth Insertion

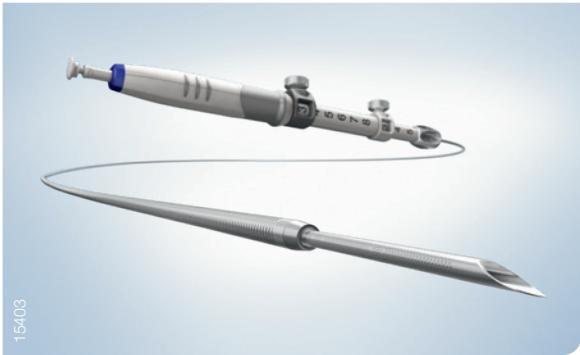
Multilayered coil sheath and nitinol\* needle tip ensure exceptional flexibility for smooth insertion even when the scope is angulated.

### Excellent Force Transmission

A coil sheath with multilayered construction facilitates excellent force transmission from the handle to the needle tip for improved ease of puncturing.

### No Needle Deformation after Multiple Passes

Nitinol\* retains its shape without deformation, even after multiple passes. This ensures the needle follows a predictable and consistent trajectory.



\* EZShot 3 Plus 19G and 22G.

### Enhanced Visibility under Ultrasound

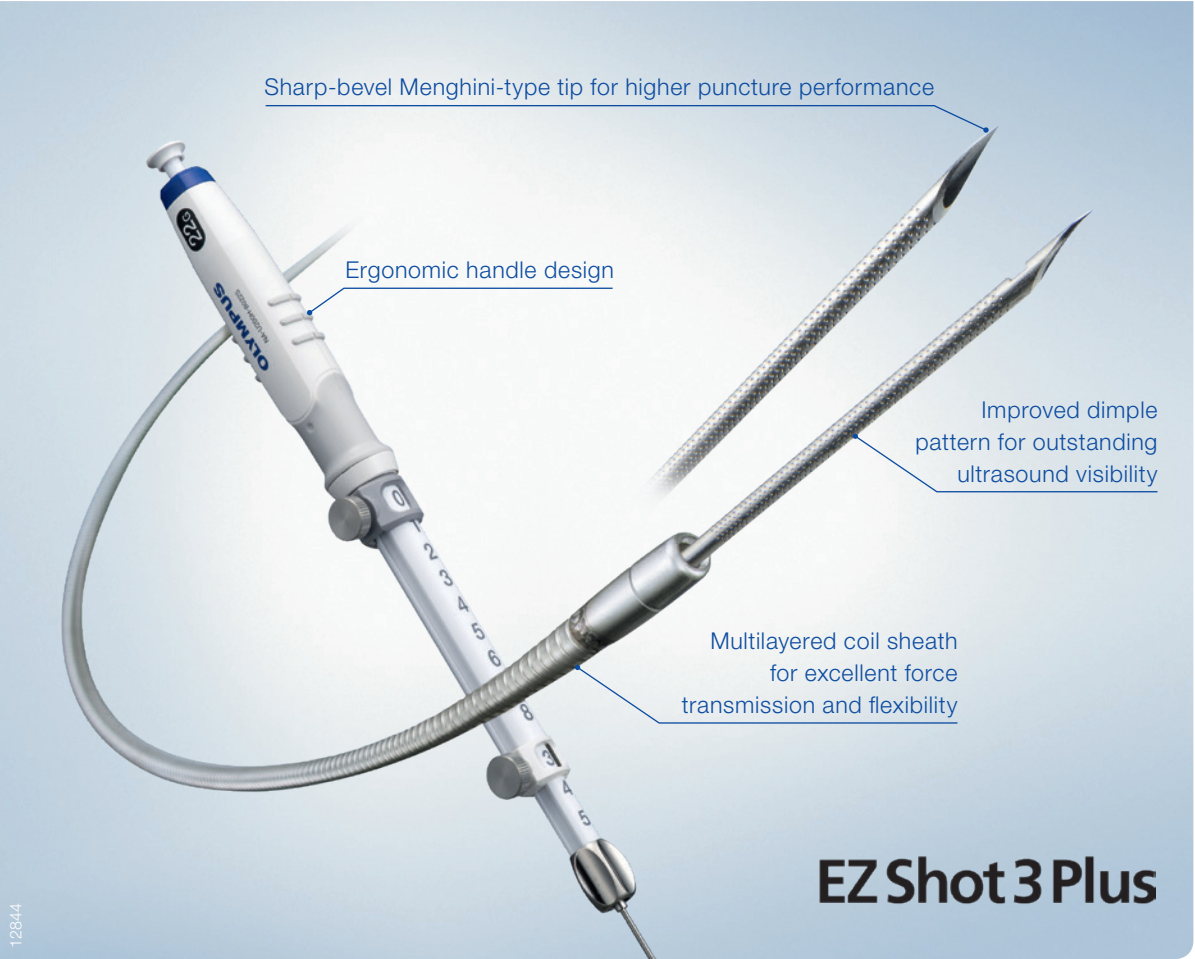
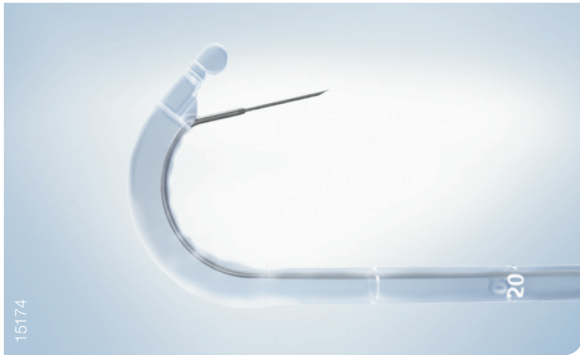
An echogenic dimple finish on the needle tip enhances ultrasound visibility and ensures precise and confident targeting of fine needle aspiration.

### Smooth Puncturing and Side Hole Option

A Menghini-type tip with sharp edges is designed for tissue core sampling and facilitates smooth puncturing, even at an oblique angle.

### Designed for FNB Intended Use

EZShot 3 Plus is available in 19G, 22G and 25G and has received CE certification for fine needle aspiration (FNA) and fine needle biopsy (FNB).



Sharp-bevel Menghini-type tip for higher puncture performance

Ergonomic handle design

Improved dimple pattern for outstanding ultrasound visibility

Multilayered coil sheath for excellent force transmission and flexibility

EZShot 3 Plus

Endoscopic Ultrasound Center EU-ME2 (Series Overview)

EVIS EUS

	EU-ME2	EU-ME2 Premier	EU-ME2 Premier Plus
Improved B-mode	Yes	Yes	Yes
High-Resolution Flow (H-Flow)	Yes	Yes	Yes
Movie Recording	No	Yes	Yes
Tissue Harmonic Echo (THE)	No	Yes	Yes
Contrast Harmonic EUS (CH-EUS)	No	Yes	Yes
Elastography	No	No	Yes

Note: Functions of the ultrasound center vary depending on the ultrasound endoscope/ultrasound probe.

Ultrasonic Videoscopes for EUS

	GF-UE190	GF-UCT180	TGF-UC180J
Scanning Mode	Electronic, 360° radial array	Electronic, curved linear array	Forward-viewing, electronic, curved linear array
Insertion Tube OD	10.9	12.6	12.6
Channel ID (mm)	2.2	3.7	3.7
Bending (Up/Down, Left/Right)	130°/90°, 90°/90°	130°/90°, 90°/90°	180°/90°, 90°/90°
Working Length (mm)	1250	1250	1245
Ultrasound Field of View	360°	180°	90°
Endoscopic Field of View (Forward/Oblique)	100°/50°	100°/55°	120°/0°
Depth of Field (mm)	3–100	3–100	3–100
Frequency (MHz)	5/6/7.5/10/12*	5/6/7.5/10/12*	5/6/7.5/10/12*

\* With EU-ME2. Please contact your Olympus representative for compatibility with other systems.

Single-Use FNA and FNB Needle

EZ Shot 3 Plus

Article Name	Order Number	Quantity	Min. Working Channel Ø	Working Length	Max. Needle Length	Needle Ø	Stylet Tip Shape
NA-U200H-8019	N5409330	5	2.8 mm	1400 mm	80 mm	19G	Rounded
NA-U200H-8019S	N5409530	5	2.8 mm	1400 mm	80 mm	19G with side hole	Rounded
NA-U200H-8022	N5409730	5	2.8 mm	1400 mm	80 mm	22G	Rounded
NA-U200H-8022S	N5409930	5	2.8 mm	1400 mm	80 mm	22G with side hole	Rounded
NA-U200H-8025	N5783830	5	2.8 mm	1400 mm	80 mm	25G	Rounded

€ 0197 € 0344 € 2797

Olympus reserves the right to correct errors, make modifications and change the service and/or product offerings.



OLYMPUS EUROPA SE & CO. KG

Postbox 10 49 08, 20034 Hamburg, Germany  
www.olympus-europa.com



E0428739 - 09/19 - ABC