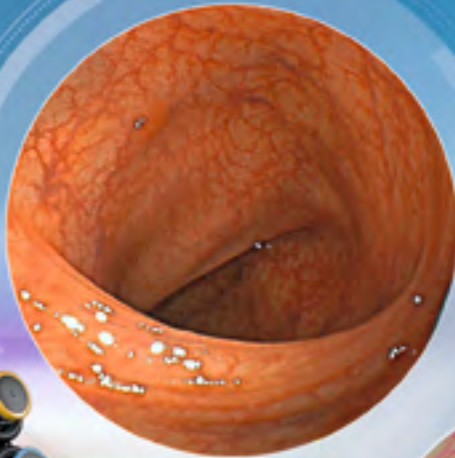
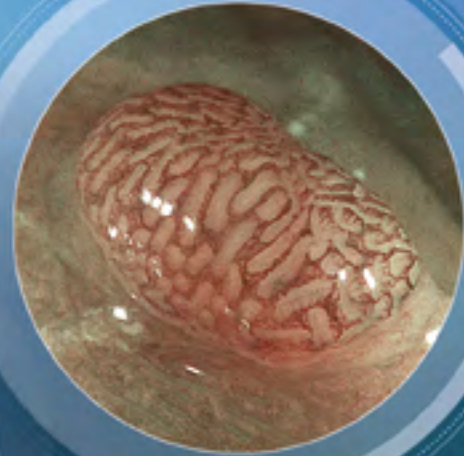


**ELUXEO™**  
WITH MULTI LIGHT  
TECHNOLOGY

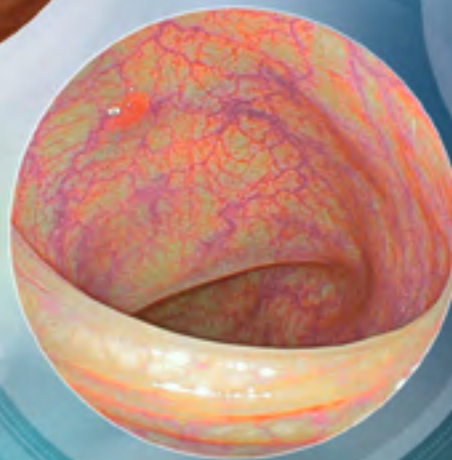
WHITE LIGHT  
IMAGING



BLI MODE  
(ZOOM)



LCI MODE



**DISCOVER  
LIGHT ENHANCED  
ENDOSCOPY**

Also available with

**CADEYE**

utilising AI technology

**FUJIFILM**  
Value from Innovation



# IMPROVING YOUR DAILY WORK WITH OUR INNOVATIVE SOLUTIONS\*



\*Learn more about our innovative AI technology at [www.cadeye.eu](http://www.cadeye.eu).

**ELUXEO™**  
Endoscopy System

**CONTENT**

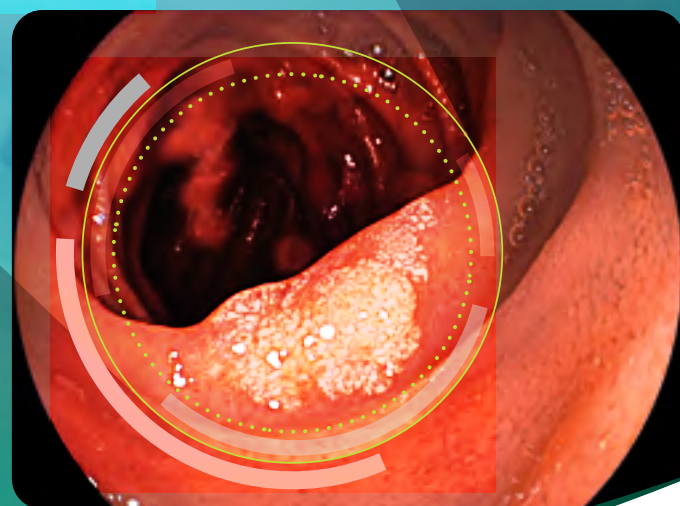
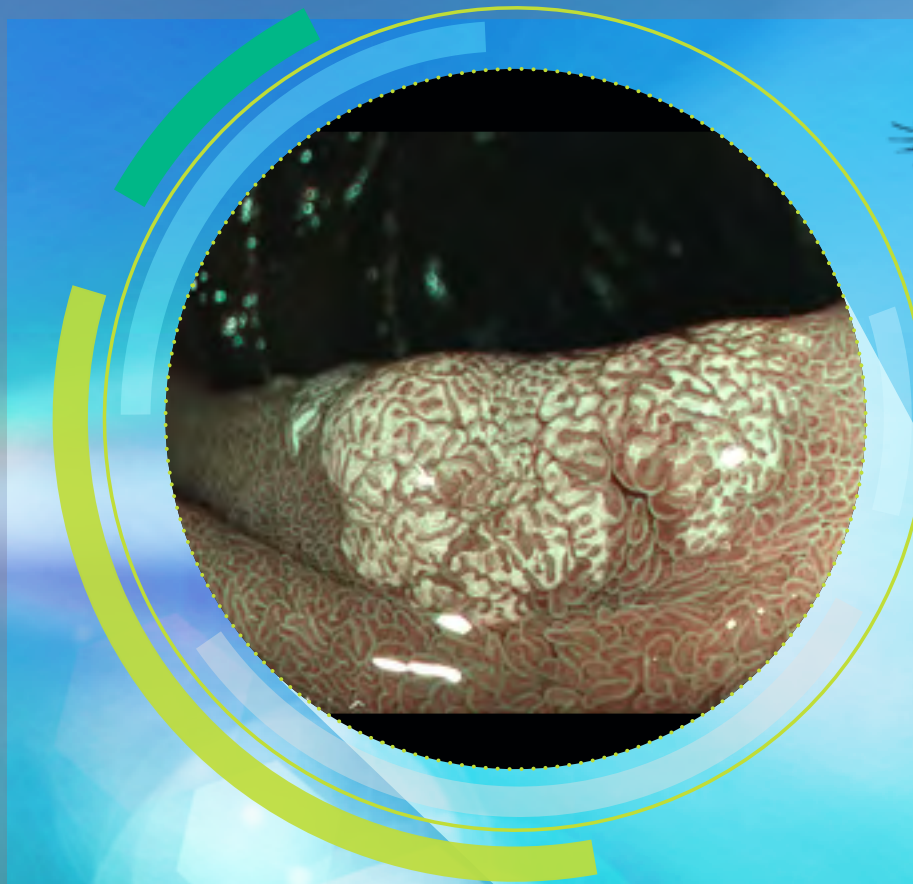
About Fujifilm	2
Multi Light™ Technology	4 – 7
Multi Zoom	8 – 9
Efficient Handling	10 – 11
CMOS Technology	12 – 13
Artificial Intelligence	14 – 15
760 / 740 Series Endoscopes	16 – 22
Tissue Management	23
7000 Endoscopy System	24 – 25
Service Commitment	26





GASTROENTEROLOGY

# THE DEFINITION OF LIGHT: **MULTI LIGHT™ TECHNOLOGY**



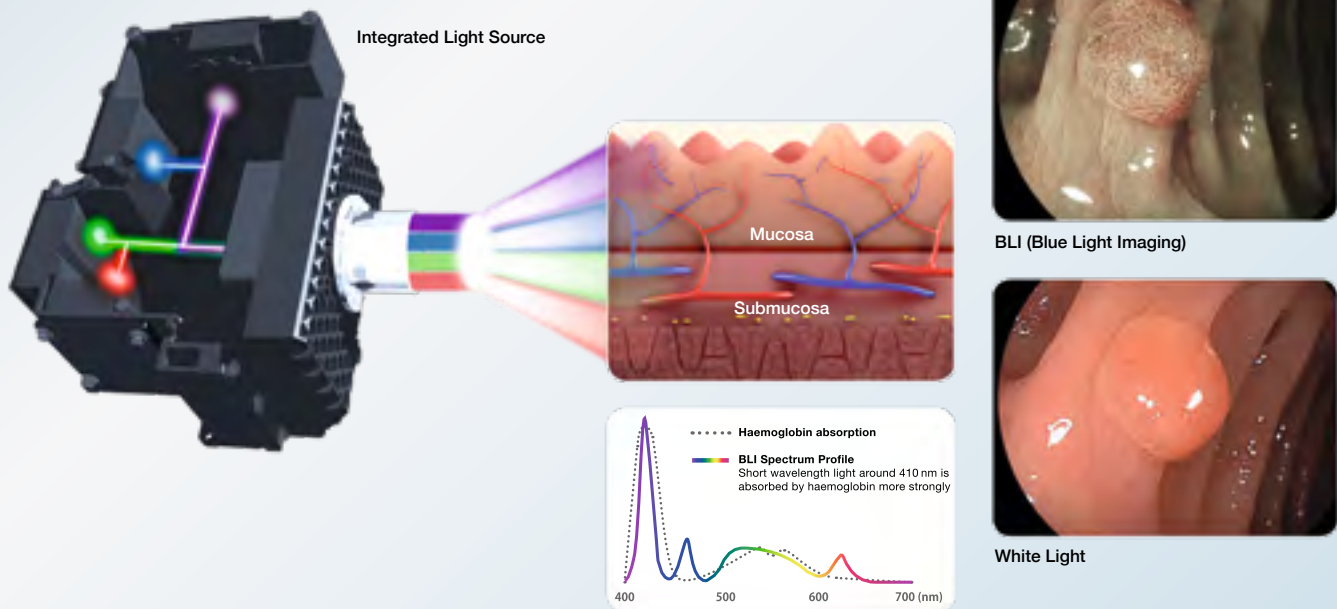
## SEE MORE. DETECT MORE.

Achieving improved diagnostic and therapeutic results in endoscopic procedures is highly dependent on image quality. As one of the world's largest imaging company, our long-standing experience in medical imaging has allowed Fujifilm's engineers to develop Multi Light™ technology, fulfilling the need for improved visualisation in endoscopy – today and in the future.

This illumination system meets high standards in brightness and contrast providing the observation modes LCI and BLI.

Specifically designed for this illumination system, the ELUXEO™ 700 series of endoscopes featuring Multi Zoom and Freeze function provides detailed high-resolution imaging for both diagnosis and pre-therapeutic assessment.

### IMPROVED ILLUMINATION USING VARIABLE LED LIGHT INTENSITY



- A high performance spectrum of light is generated from a powerful light source with four individual LED light bulbs.

- Enhanced visualisation of haemoglobin, and thus blood vessels, is generated by the high peak intensity of short-wavelength light (blue-violet and blue).
- Specific light spectrum settings targeting the mucosal layers result in improved contrast and higher definition of imaging.

This drawing is for illustration only and not a complete representation.



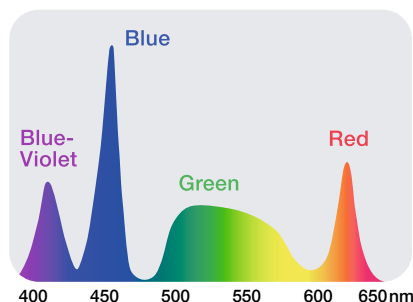
# EFFECTIVE LIGHT CONFIGURATION FOR EXCELLENT VISUALISATION



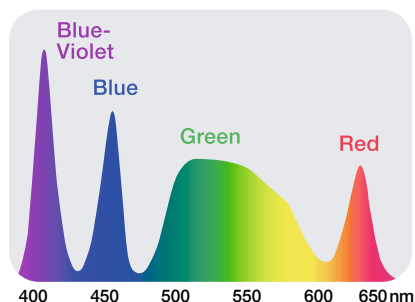
High-intensity illumination based on Multi Light™ technology creates high-quality images with White Light Imaging and the observation modes LCI and BLI. With the involvement of numerous clinical experts, the ideal composition of four LEDs for each observation mode has been developed to achieve excellent results in illumination. With a simple push of a button, you can easily switch between the following observation modes:

## EFFECTIVE LIGHT CONFIGURATION OF FOUR LEDs

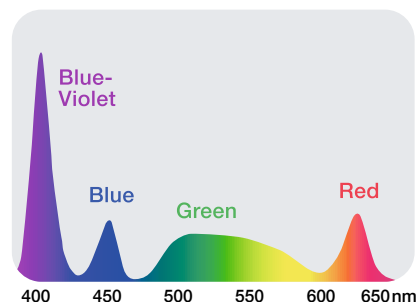
### WHITE LIGHT IMAGING



### LCI MODE



### BLI MODE



## WHITE LIGHT IMAGING

This endoscopy system provides high image quality in terms of sharpness and brightness to gather suitable visual information for diagnostic and therapeutic procedures in daily clinical practice.



Colon – White Light Imaging



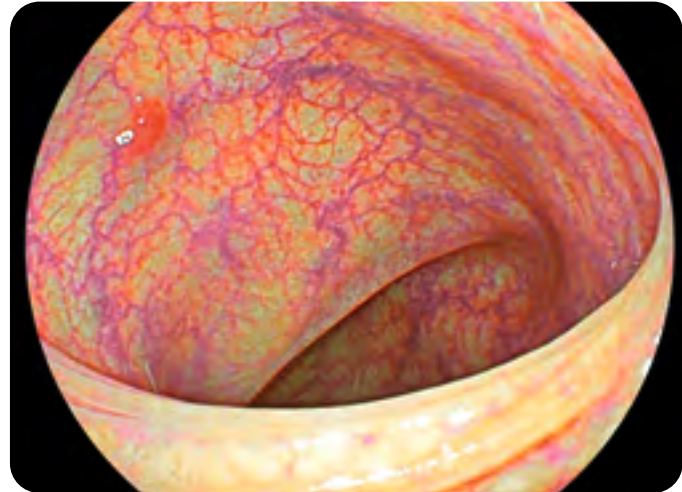
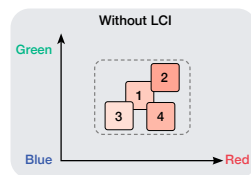
Oesophagus – White Light Imaging

## LCI (LINKED COLOR IMAGING) MODE

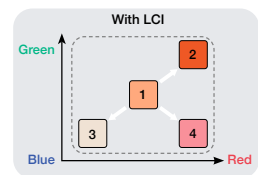
LCI differentiates the red colour spectrum more effectively than White Light Imaging thanks to its pre-process composition of light spectrum and advanced signal processing. The increased colour contrast in red colour leads to improved visibility of abnormalities, inflammation and delineation.



Colon – White Light Imaging

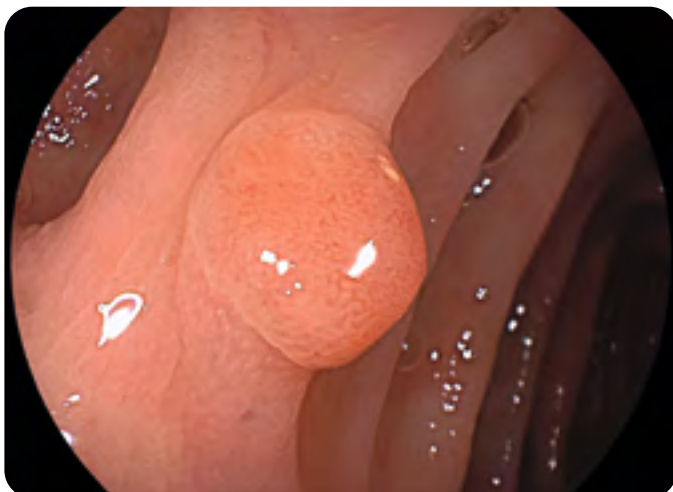


Colon – LCI Mode

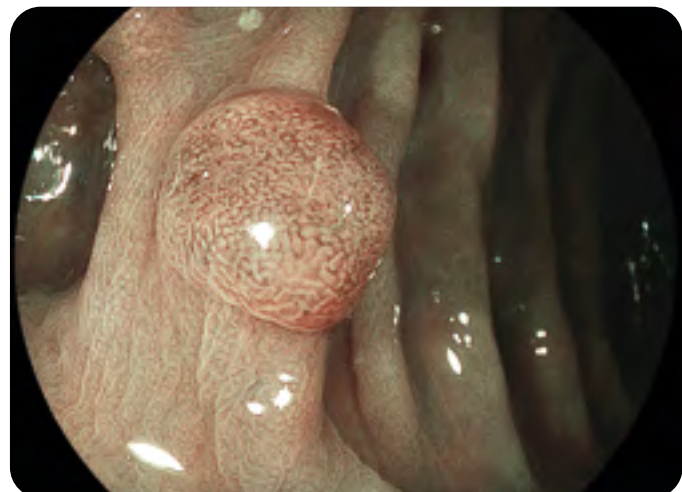


## BLI (BLUE LIGHT IMAGING) MODE

High-intensity contrast imaging with BLI is expected to be helpful for improved visualisation of superficial vascular and mucosal patterns. Focussing on the characteristics of short wavelength absorption of haemoglobin (at 410nm) combined with specific white light spectral colours results in improved contrast imaging.



Colon – White Light Imaging



Colon – BLI Mode



GASTROENTEROLOGY

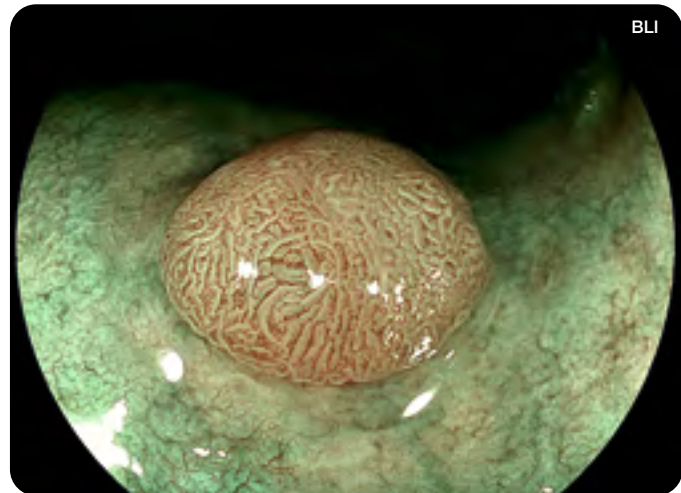
# 145 x MULTI ZOOM\* FOR DETAILED CHARACTERISATION



## OPTICAL MAGNIFICATION

The easy-to-control Step Zoom function supports efficient work of the optical zoom with a simple press of a button. Users are able to choose between the 2-, 3- or 5-Step mode or continuous zoom mode to meet individual needs and adjust to the preferred setting for the endoscopic procedure.

Fujifilm's Multi Zoom serves with a maximum optical magnification of 145 x\* to provide a highly detailed image of the mucosal surface and vascular patterns.



2-Step Zoom with a magnification of about 60 x

## VARIOUS MULTI ZOOM MODES



Mode	Magnification setting				
	Normal	Low (about 60 x)	Middle (about 85 x)	High (about 100 x)	Maximum (145 x)*
2-Step Zoom	●	●			
3-Step Zoom	●	●	●		
5-Step Zoom	●	●	●	●	●
Continuous Zoom	■				

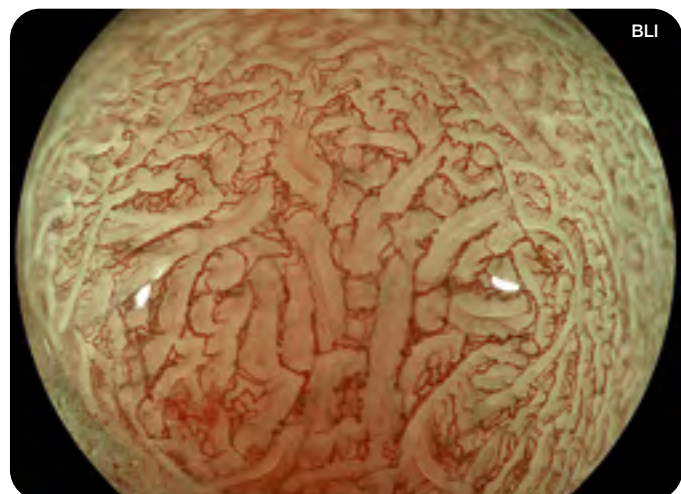
EG-760Z, EC-760Z and EC-760ZP are equipped with the Multi Zoom function.



3-Step Zoom with a magnification of about 85 x

## SMOOTH OPERATION

The location of the switch button on the endoscope has been enhanced. Due to improved ergonomic design, switching to the next zoom level is even easier and more straight forward, being expected to facilitate precise and comfortable manoeuvrability of the endoscope.



5-Step Zoom with a magnification of about 145 x\*

\*In combination with 26" screen.



GASTROENTEROLOGY

# EFFICIENT HANDLING

## PLUG IN AND PROCEED

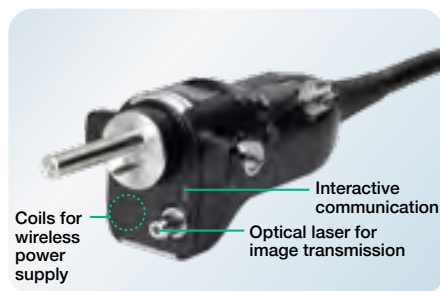


**The ELUXEO™ 700 series of Fujifilm endoscopes with One-Step Connector and easy-to-control G7 grip is designed to lead you efficiently and effectively through your examination.**

## ONE-STEP CONNECTOR FOR EASY PLUG-IN



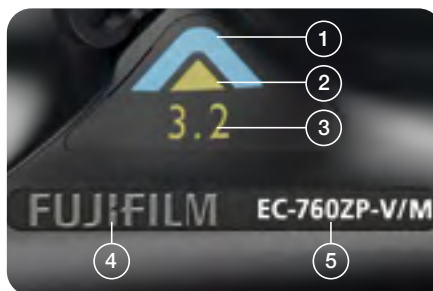
The One-Step Connector can be plugged in easily and the 700 series endoscopes is the first to incorporate an integrated wireless power supply that provides high speed transmission of data. The design helps to simplify the cleaning process and also reduces the potential for accidental damage.



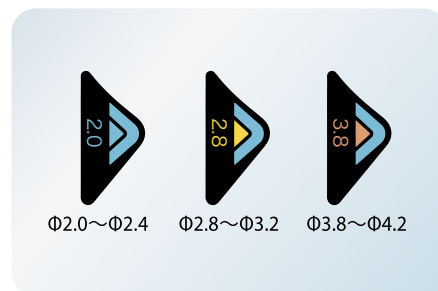
## G7 GRIP FOR COMFORT IN DAILY PRACTICE



In close cooperation with leading endoscopists, Fujifilm has renewed the layout and size of the components of the control portion and repositioned the angulation knobs to increase accessibility from the grip. The G7 grip is designed to have an easy and comfortable feel that improves performance and reduces stress during clinical procedures.



- 1 Colour code of G7 control portion
- 2 Identification colour of working channel size
- 3 Working channel diameter
- 4 Corporate brand logo
- 5 Model No.



Each 700 series endoscope displays the information required to choose compatible accessories, which helps to facilitate on-the-spot decision making.



# CMOS TECHNOLOGY

## BRILLIANCE RIGHT FROM THE TIP



**ANTI-BLUR  
IMAGES**

**CMOS-CHIP  
IN THE TIP**

Protect your distal end  
during transport or storage  
with the Shepherd  
Endoscope Protector.

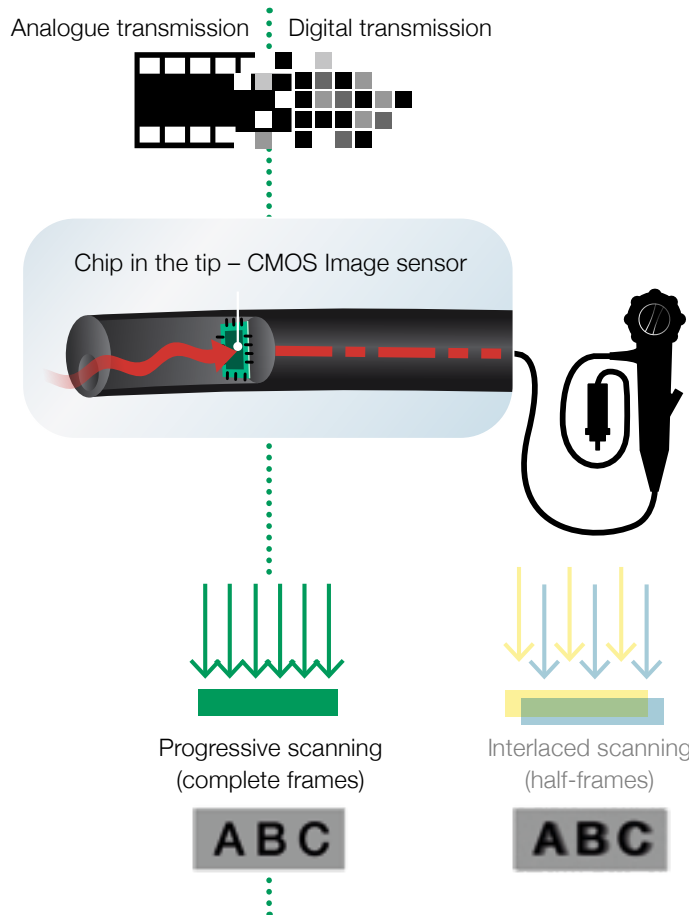


SHEPHERD

## FUJIFILM'S CMOS TECHNOLOGY WITH MEGAPIXEL



With the CMOS chip built directly into the tip of the scope, the signal is digitally transmitted through the device, thus providing high-resolution imaging. All 760 endoscopes are equipped with CMOS.



**The CMOS chip** is positioned directly in the tip of the scope and transforms the analogue signal into a digital signal at the site of examination. This ensures **brilliant image transmission with reduced noise**.

**CMOS technology** supports 60 frames progressive scanning technology where complete images are processed, rather than the half-frames processed when using the interlaced scanning method. The result is a high-resolution image and smooth moving images with reduced blurring.

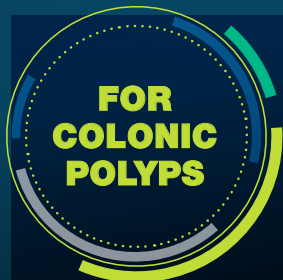


Colon in super high resolution



GASTROENTEROLOGY

# ELUXEO™ ULTRA MEETS ARTIFICIAL INTELLIGENCE



EXPANSION UNIT EX-1



CAD EYE works with the expansion unit EX-1 and the CAD EYE software EW10-EC02. With software EW10-SC01 up to 30 hours of movie and still image material can be stored in the internal memory of EX-1. It can easily be controlled with the scope switch or directly at the processor.



**GOOD DESIGN  
AWARD 2019**

For CAD EYE software

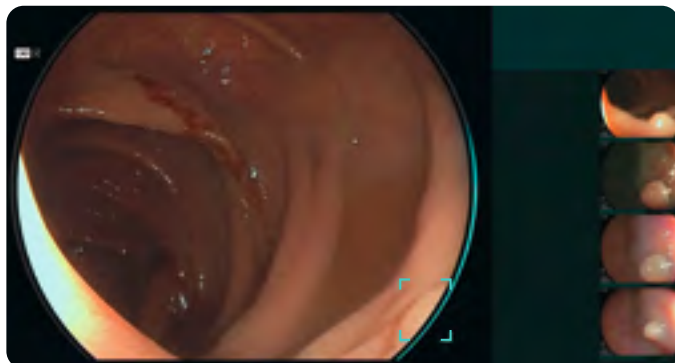
For further information on the Eluxeo Ultra platform visit [www.eluxeo-ultra.com](http://www.eluxeo-ultra.com)

The novel function CAD EYE has been developed utilising AI deep learning technology and is compatible with Fujifilm's ELUXEO™ endoscopy series to support endoscopic lesion detection and characterisation in the colon.



## REAL-TIME DETECTION

**CAD EYE is aimed to improve the real time polyp detection rate** to expert level, helping to recognise flat lesions, multiple polyps simultaneously as well as any lesions at the corner of the image. CAD EYE Detection is possible with White Light and LCI (Linked Color Imaging) mode.



White Light Mode



LCI Mode

## CHARACTERISATION SUPPORT

Once a suspected polyp is detected by CAD EYE Detection (WLI or LCI), CAD EYE Characterisation – in combination with BLI – can support endoscopists in the predictive histopathological diagnosis of the polyp. This function analyses in real-time and without freezing or zooming if a polyp is hyperplastic or neoplastic, which is visually indicated by the use of different colour codes in the Position Map. CAD EYE Characterisation is aimed to make procedures more efficient by increasing the accuracy of diagnosis to expert-level.\*



BLI Mode – Neoplastic



BLI Mode – Hyperplastic

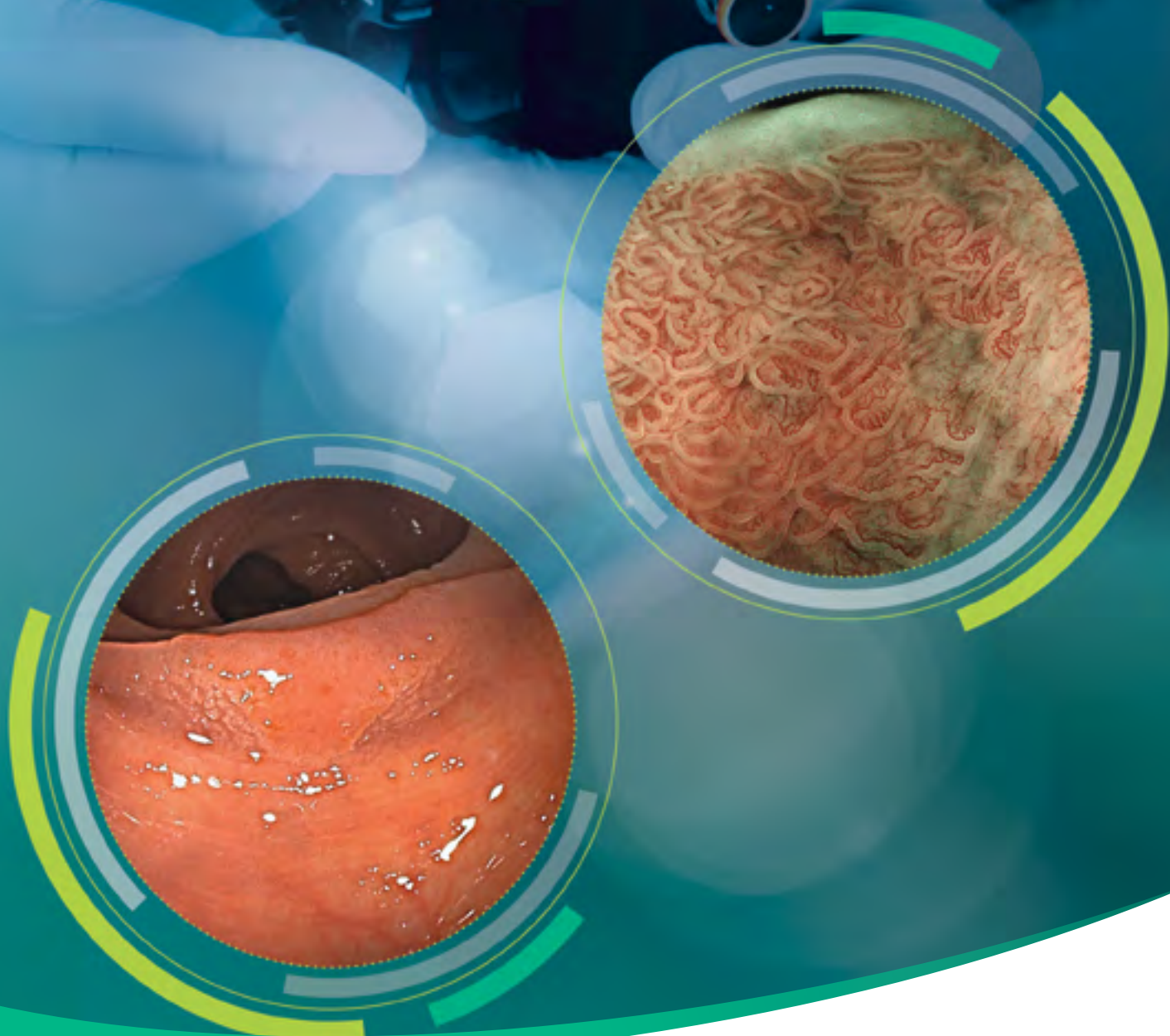
\*According to the validation study, the accuracy of non experts with the assistance of CAD EYE Characterisation was equivalent to that of an expert.

**FOR FURTHER INFORMATION  
VISIT [WWW.CADEYE.EU](http://WWW.CADEYE.EU)**



GASTROENTEROLOGY

# 760 / 740 SERIES ENDOSCOPES FOR COMFORTABLE EXAMINATIONS



## UPPER GI ENDOSCOPY

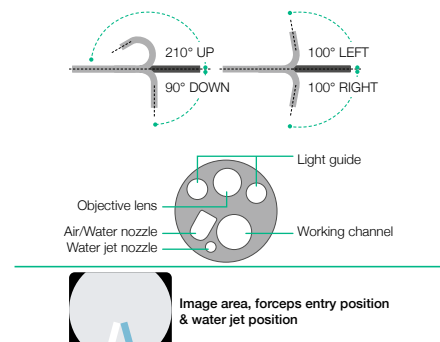
### ELUXEO™ VIDEO GASTROSCOPE EG-760R



This routine gastroscope from the ELUXEO™ 760 series is equipped with CMOS technology and provides HD images and videos for daily practice. Close Focus allows observation from as little as 2 mm in depth.



Field of view	140°
Observation range	2–100 mm
Bending capability	Up 210° / Down 90° Right 100° / Left 100°
Distal end diameter	9.2 mm
Flexible portion diameter	9.3 mm
Working channel diameter	2.8 mm
Working length	1,100 mm
Total length	1,400 mm



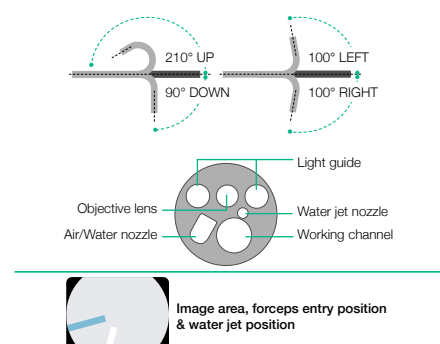
### ELUXEO™ VIDEO GASTROSCOPE EG-760Z Optical Magnification



This zoom gastroscope features the well-known 145x Multi Zoom\* which leads to clear and more detailed visualisation, supporting deeper analysis of mucosal structures. It has a small bending radius and similar functionality to the routine gastroscope including all features.

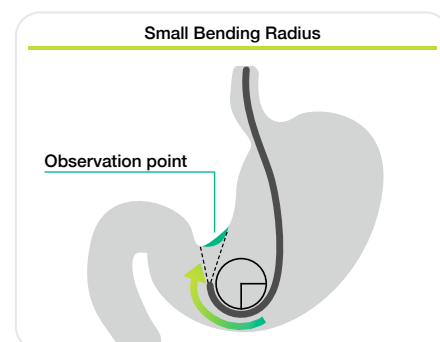
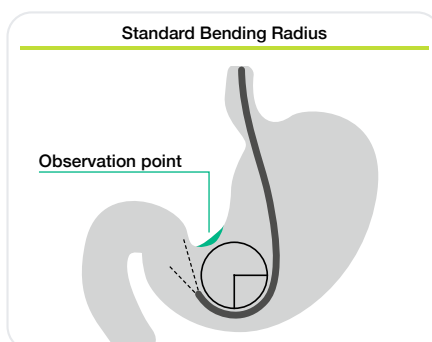


Field of view	Normal 140°/Close 56°
Observation range	1.5–100 mm Normal 3–100 mm Close 1.5–2.5 mm
Bending capability	Up 210° / Down 90° Right 100° / Left 100°
Distal end diameter	9.9 mm
Flexible portion diameter	9.8 mm
Working channel diameter	2.8 mm
Working length	1,100 mm
Total length	1,400 mm



## SMALL BENDING RADIUS

Features a tight bending section radius with improved angulation. It is designed to approach the targeted observation point and lesion more easily and with less effort.



\*In combination with 26" screen.



## UPPER GI ENDOSCOPY

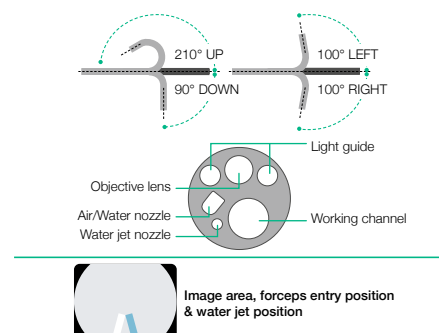
### ELUXEO™ VIDEO GASTROSCOPE **EG-760CT** Therapeutic Type



This gastroscope from the ELUXEO™ 760 series is equipped with a large 3.8mm working channel that is especially suitable for therapeutic procedures compared to the standard gastroscope EG-760R with a working channel of 2.8 mm. In addition to therapeutic use, the gastroscope features LCI, intended to improve detection, and BLI, intended to characterise lesions, making it an excellent gastroscope for observation.

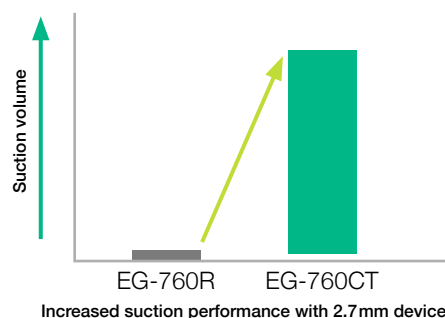
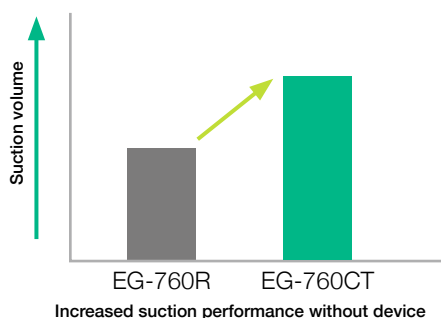


Field of view	140°
Observation range	2–100 mm
Bending capability	Up 210° / Down 90° Right 100° / Left 100°
Distal end diameter	10.5 mm
Flexible portion diameter	10.8 mm
Working channel diameter	3.8 mm
Working length	1,100 mm
Total length	1,400 mm



#### ENLARGED WORKING CHANNEL FOR IMPROVED SUCTION PERFORMANCE

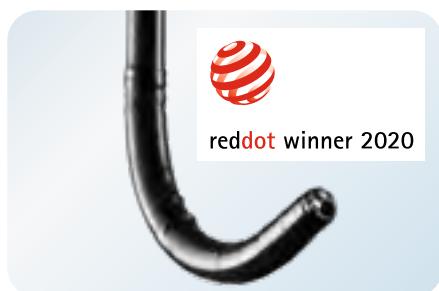
The 3.8 mm working channel has a higher suction capacity compared to other gastroscopes, especially when the therapeutic accessory is inserted into the working channel.



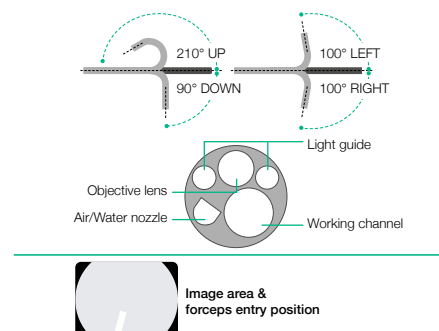
### ELUXEO™ VIDEO GASTROSCOPE **EG-740N** UltraSlim Type



This ultraslim gastroscope with a distal end diameter of 5.8mm is expected to be useful for paediatric use and for cases featuring stenosis. The slim distal end also supports a soft transnasal insertion and offers a potential to alleviate patients' discomfort.



Field of view	140°
Observation range	3–100 mm
Bending capability	Up 210° / Down 90° Right 100° / Left 100°
Distal end diameter	5.8 mm
Flexible portion diameter	5.9 mm
Working channel diameter	2.4 mm
Working length	1,100 mm
Total length	1,400 mm

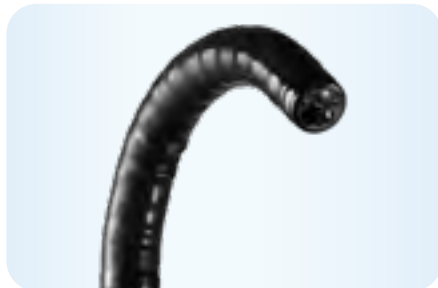


## LOWER GI ENDOSCOPY

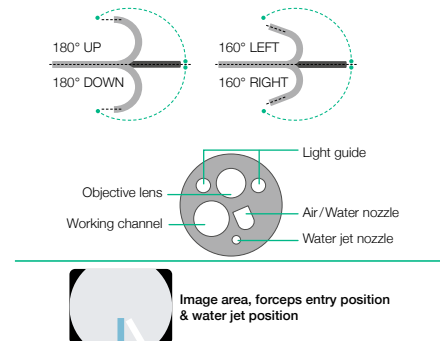
### ELUXEO™ VIDEO COLONOSCOPE **EC-760R-V/M, I, L**



This routine colonoscope has a wide field of view of 170° as well as a large working channel diameter of 3.8 mm. It features the G7 grip and the Flexibility Adjuster. In addition, it has a slim diameter of 12.0 mm and includes a water jet function and CMOS technology.



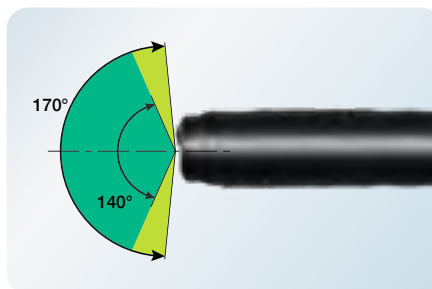
Field of view	170°
Observation range	2–100 mm
Bending capability	Up 180°/Down 180° Right 160°/Left 160°
Distal end diameter	12.0 mm
Flexible portion diameter	12.0 mm
Working channel diameter	3.8 mm
Working length	1,330/1,520/1,690 mm
Total length	1,650/1,840/2,010 mm



#### WIDE 170° FIELD OF VIEW



With EC-760R and EC-760P, a wide 170° field of view is available. It is designed to observe and approach smoothly, even areas that are hard to observe, such as the reverse side of folds.

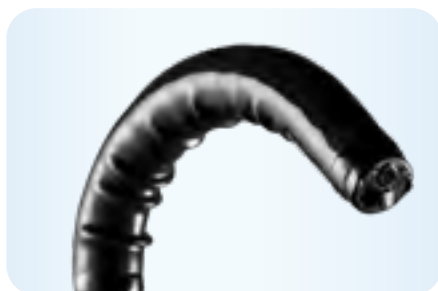


**NEW**

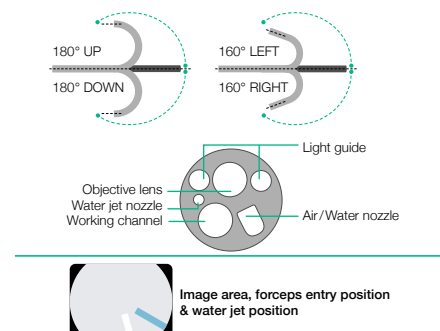
### ELUXEO™ VIDEO COLONOSCOPE **EC-760Z-V/M, L** Optical Magnification



The new zoom colonoscope is an allrounder. It features the brilliant and easy-to-operate 145x Multi Zoom<sup>1</sup> magnification which leads to more detailed visualisation, supporting a deeper analysis of mucosal and vascular patterns. Compared to the EC-760ZP paediatric zoom type, it comes with a stiffer insertion tube and a larger working channel (3.8 mm vs. 3.2 mm), making it well suited also for basic therapeutic procedures.



Field of view	Normal 140°/ Close 56°
Observation range	1.5-100 mm Normal 3-100 mm Close 1.5-2.5 mm
Bending capability	Up 180°/Down 180° Right 160°/Left 160°
Distal end diameter	12.8 mm
Insertion tube diameter	12.8 mm
Working channel diameter	3.8 mm
Working length	1,330 mm / 1,690 mm
Total length	1,650 mm / 2,010 mm



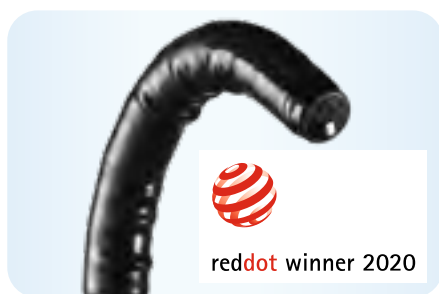


## LOWER GI ENDOSCOPY

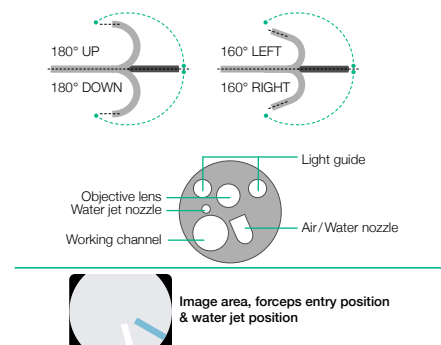
### ELUXEO™ VIDEO COLONOSCOPE EC-760ZP-V/M, L Optical Magnification



The slim zoom colonoscope features the brilliant and easy-to-operate Multi Zoom with 145x maximum magnification\*. Together with BLI, details of the mucosal and vascular patterns become visible. Like the routine scope, it features the full range of functionalities including flexible adjustment even with the slim diameter of 11.8 mm.



Field of view	Normal 140°/Close 56°
Observation range	Normal 3–100 mm Close 1.5–2.5 mm
Bending capability	Up 180°/Down 180° Right 160°/Left 160°
Distal end diameter	11.7 mm
Flexible portion diameter	11.8 mm
Working channel diameter	3.2 mm
Working length	1,330/1,690 mm
Total length	1,650/2,010 mm



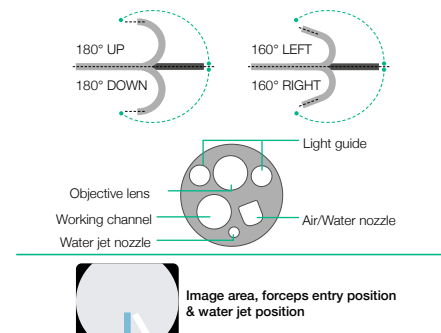
### ELUXEO™ VIDEO COLONOSCOPE EC-760P-V/M, L Ultraslim Type



This ultraslim colonoscope from the ELUXEO™ 760 series has a distal end diameter of only 11.1 mm and is therefore expected to be useful for paediatric and therapeutic use. A wide 170° field of view enables a visualisation even in hard-to-observe areas. It features the G7 grip and the Flexibility Adjuster for easier insertion.



Field of view	170°
Observation range	2–100 mm
Bending capability	Up 180°/Down 180° Right 160°/Left 160°
Distal end diameter	11.1 mm
Flexible portion diameter	11.5 mm
Working channel diameter	3.2 mm
Working length	1,330/1,690 mm
Total length	1,650/2,010 mm



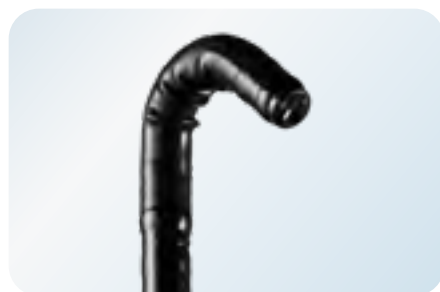
\*In combination with 26" screen.

## LOWER GI ENDOSCOPY

### ELUXEO™ VIDEO COLONOSCOPE EC-740T/M, L Slim & Treatment Type



This slim colonoscope is equipped with Advanced Force Transmission, 210° up-angulation and a G7 grip that supports excellent manoeuvrability. It is expected to be useful for more challenging anatomies and paediatric use, such as stenosis, severe inflammation, or anatomical adhesion. With the additional observation modes LCI, intended to improve detection, and BLI, intended to characterise lesions, this provides an excellent colonoscope for both observation and therapeutic procedures.



Field of view	140°
Observation range	3–100 mm
Bending capability	Up 210°/Down 160° Right 160°/Left 160°
Distal end diameter	9.8 mm
Flexible portion diameter	10.7 mm
Working channel diameter	3.2 mm
Working length	1,330/1,690 mm
Total length	1,630/1,990 mm

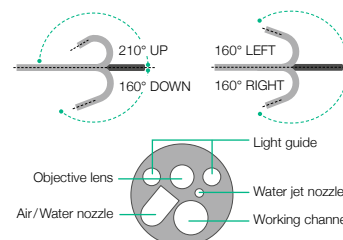


Image area, forceps entry position & water jet position

### SMART BEND



**Smart Bend provides excellent manoeuvrability, observation and therapeutic treatments from 210° up angulation and a small bending radius.** It is expected to be useful for treatment of difficult-to-reach lesions.



Smart Bend colonoscope



Colonoscope without Smart Bend



UP TO  
210°



## COLOASSIST ADJUST

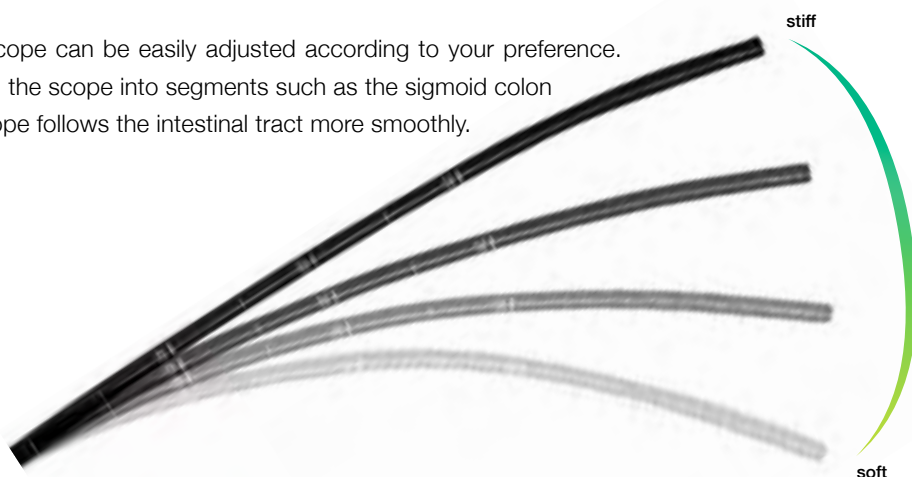


**ColoAssist Adjust** has been specifically developed for the 760 series colonoscopes. It features the **Flexibility Adjuster** with different levels of stiffness as well as **Advanced Force Transmission** and **Adaptive Bending**, expected to be helpful for manoeuvrability.

## FLEXIBILITY ADJUSTER



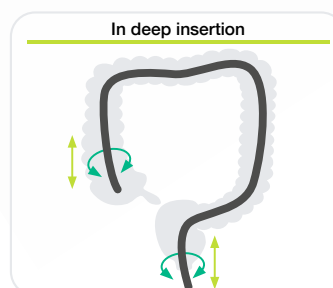
The stiffness of the flexible portion of the scope can be easily adjusted according to your preference. This is expected to be helpful when inserting the scope into segments such as the sigmoid colon and the transverse colon where the endoscope follows the intestinal tract more smoothly.



## ADVANCED FORCE TRANSMISSION



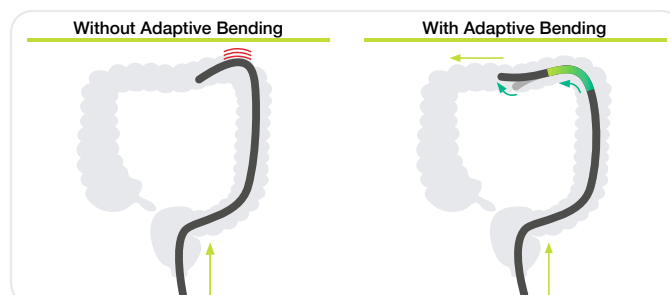
The flexible portion is designed to transmit the pushing, pulling and rotating movements from the hand to the distal end of the endoscope. It is expected to be helpful for manoeuvrability inside the digestive tract.



## ADAPTIVE BENDING



The end of the bending section is soft, allowing the scope to bend easily. The flexible bending section has been designed to return more easily to its straight form after passing through the tight curves of the colon.



## TISSUE MANAGEMENT

### IMPRESSIVE PRECISION IN EXTREME POSITIONS

#### medw<sup>ork</sup>. MANTA Injection Needles

Follows every curve: the flexible Manta injection needle even finds its way through highly convoluted regions of the body and yet retains its high precision. Very high kink-resistance and single handed operation ease the application. The improved needle design is supposed to make the injection of fluids easier.



### COLD POLYP RESECTION IN A NEW DIMENSION

#### medw<sup>ork</sup>. CrossSnare **ZERO** Polypectomy snares for cold snaring

Great effect on small polyps: Less effort and excellent cutting performance – that's what CrossSnare ZERO offers you thanks to its reinforced spiral tube design. Equipped with extra thin cutting wire and available in two different sizes, CrossSnare ZERO is an excellent choice for polyps up to 9 mm and supports you well in implementing the ESGE guideline\*.



### DIRECT ROTATABILITY AND A HIGH DEGREE OF FLEXIBILITY

#### medw<sup>ork</sup>. OCTOPUS Foreign body retrieval net

High volume: The Octopus retrieval net takes on polyps and foreign bodies. The sturdy structure of the frame ensures reliable removal. Versatility in use, it can be used for several foreign bodies – due to its reservoir function.



### CONTINUITY IN USE

#### medw<sup>ork</sup>. KOALA Polytrap

Of course it cannot handle two kilos of eucalyptus, but it can manage several polyps cleanly. The two or four removable filter trays of the koala polyp trap facilitate easy removal of tissue specimens.



\* Ferlitsch Monika et al.: „Colorectal polypectomy and endoscopic mucosal resection (EMR): European Society of Gastrointestinal Endoscopy (ESGE) Clinical Guideline“, Endoscopy 2017.



GASTROENTEROLOGY

# EXCELLENT ENDOSCOPY SYSTEM WITH MULTI LIGHT™ TECHNOLOGY



**EIZO Curator  
EX 3241:  
FOR A 4K  
RESOLUTION  
IN COMBINATION  
WITH THE  
ELUXEO  
SYSTEM**

## Design Award Winner

ELUXEO™ BL-7000 and VP-7000



reddot design award  
winner 2017



DESIGN  
AWARD  
2017

## ELUXEO™ 7000

VIDEO PROCESSOR VP-7000



LIGHT SOURCE BL-7000

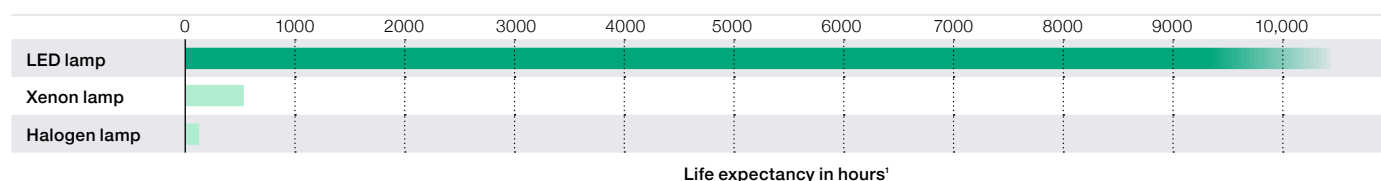


The ELUXEO™ endoscopy system provides a future ready solution that combines excellent illumination with refined operational modalities. Its Multi Light™ technology makes it an eco-friendly system with longer durability that is designed to support daily practice.

## 4-LED MULTI LIGHT™ SOURCE WITH HIGH DURABILITY ELUXEO™ BL-7000



A reliable light source is a prerequisite for use in large clinics as well as smaller outpatient centres to ensure procedures can take place as scheduled. To achieve the highest standards, the eco-friendly ELUXEO™ 7000 system features the 4-LED Multi Light™ Source, which outperforms conventional Xenon or Halogen light sources: With a 10,000 hours<sup>1</sup> average life expectancy of the LED lights, the ELUXEO™ system has a far longer durability while having a much lower energy consumption, resulting in a better cost-efficiency.



Our confidence in the ELUXEO system BL-7000 is reflected by Fujifilm's **Durability Warranty**, which covers any defect of the LED light source unit that is attributable to a manufacturing or assembly fault under normal use for a period of five years or 10,000 operating hours, whichever comes first.<sup>2</sup>

## HIGH PERFORMANCE VIDEO PROCESSOR ELUXEO™ VP-7000



The ELUXEO™ video processor VP-7000 enables you to make use of the many features provided by Fujifilm's wide range of scopes along with the 4-LED illumination system and its visualisation modes LCI and BLI. It is also compatible with the 600 and 500 series of endoscopes. The processor creates high quality images and videos displayed in full HD on the monitor. Automatic back-up mode for data storage is integrated and the processor is also DICOM compatible.

## EXCELLENT MONITOR EIZO CURATOR® EX3241



The LCD monitor CuratOR EX3241<sup>3</sup> features 4K UHD resolution (3840 x 2160 pixels) as well as an energy-efficient LED backlight with a brightness of 700 cd/m<sup>2</sup>. The resolution of 3840 x 2160 is four times higher than Full HD and can faithfully reproduce the image taken from a 4K endoscope. HDR (High Dynamic Range) simulates the way colour and light are perceived by the human eye. The monitor is also equipped with the perceptual quantization (PQ) curve and hybrid log-gamma (HLG) for supporting HDR. This ensures images from HDR-supported endoscope cameras are displayed without crushing blacks and more closely resemble human vision.

Input signal	DisplayPort (HDCP 1.3), HDMI (HDCP 2.2/1.4), BNC(12G-SDI), BNC (3G-SDI), DVI-D x 2 (HDCP 1.4)
Output signal	BNC (12G-SDI), BNC (3G-SDI), DVI-D
Dimensions (W x H x D)	760 x 463 x 87
Weight	12.8 kg

<sup>1</sup> Based on Fujifilm's recommended conditions.

<sup>2</sup> This Warranty is only valid according to the terms and conditions of the Durability Warranty Policy.

<sup>3</sup> Manufactured by EIZO Corporation, Japan. <https://eizo-or.com/en/global/products/monitors/ex3241>



# OUR **SERVICE** COMMITMENT

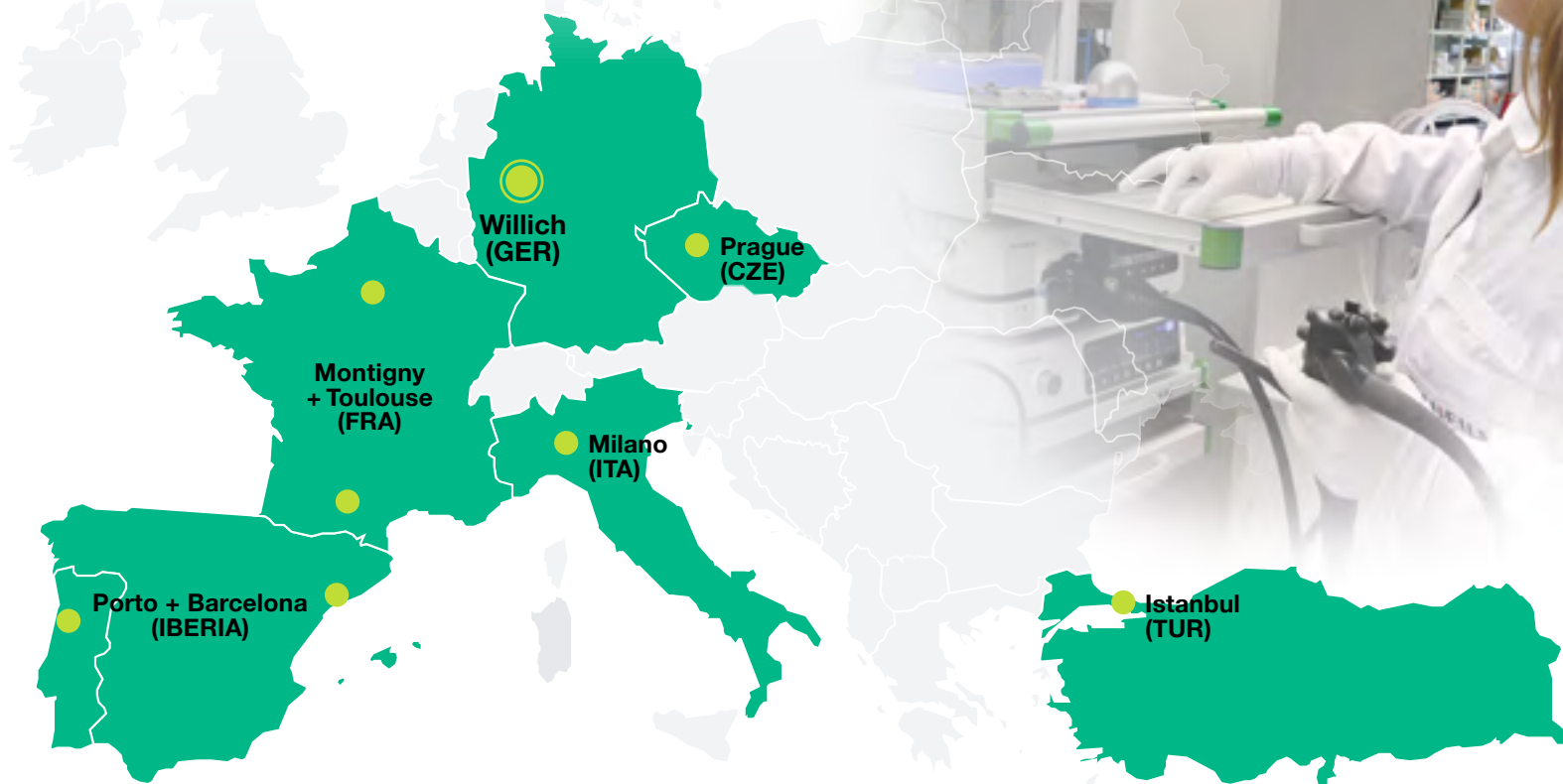
## THINK GLOBALLY – ACT LOCALLY

Our service strategy aims for highest customer satisfaction by offering a comprehensive service and being close to the local markets. Eight service centers with the headquarters in Willich (Germany) are spread over Europe and employ highly qualified in-house technicians and experts in the field service, allowing a faster and better coverage of all the customer needs.

## OUR FULL COMPREHENSIVE SERVICE CONTRACT COVERS

- In-house repair service
- All repair costs
- Highly qualified field service engineers
- Large variety of loan devices
- Maintenance service and damage prevention
- Support for reprocessing and on-site consulting

## OUR SERVICE NETWORK







**FUJIFILM**

**FUJIFILM Europe GmbH**

Heesenstr. 31, 40549 Düsseldorf, Germany  
Tel.: +49 211-50 89 0, Fax: +49 211-50 89 8700  
[www.fujifilm-endoscopy.com](http://www.fujifilm-endoscopy.com), [endoscopy\\_eu@fujifilm.com](mailto:endoscopy_eu@fujifilm.com)

Specifications are subject to change without notice. The name FUJIFILM and the FUJIFILM logo are trademarks of FUJIFILM Corporation. All other trademarks shown are trademarks of their respective owners. All rights reserved. SAP70170009239. 02/2021.

