

EverLift[®]

Submucosal Lifting Agent

GASTROENTEROLOGY
Reliable Lift
Cost Effective
Conveniently Packaged



EverLift

Submucosal Lifting Agent

Indication for Use

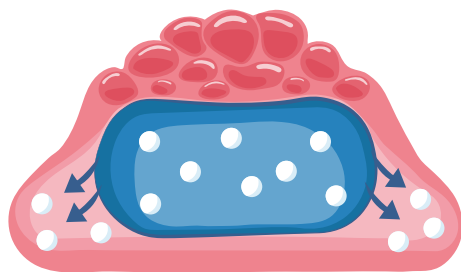
EverLift Submucosal Lifting Agent is indicated for use in gastrointestinal endoscopic procedures for submucosal lift of polyps, adenomas, early-stage cancers, or other gastrointestinal lesions prior to excision with a snare or other appropriate endoscopic device.



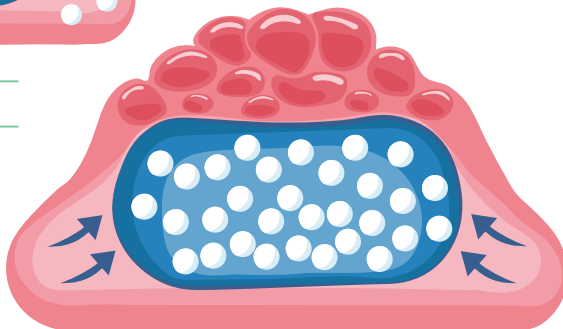
Reliable Lift

Cellulose-Based & hypertonic

- EverLift is specially formulated with hypertonic properties that slow its rate of absorption in the body.
- The slower rate of absorption contributes to a reliable, long-lasting lift.

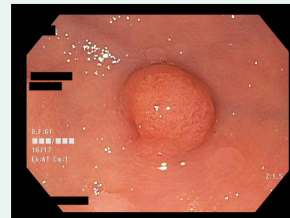


▲ Hypotonic solution

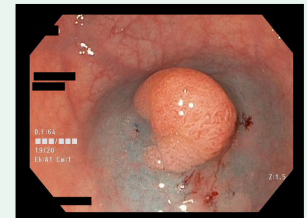


▲ Hypertonic solution

EverLift provides margin delineation with darker color.



Sessile polyp in the rectum.



Sessile polyp in the rectum, 3 mL of EverLift injected on the peripheral edges.

EverLift holds a 2 mm lift for 60 minutes.*

*Average lift duration based on GI Supply, Inc. data on file.

The lift you've been waiting for.



Conveniently Packaged

Pre-mixed with Methylene Blue

Methylene Blue is used to highlight the lesion perimeter and aid in increased occurrence of en bloc resection rates, reduced occurrence of residual lesion, incomplete resections, and improved identification of muscle injury to help avoid missed perforations.

Requires No Pre-Prep

Convenient zero-prep, pre-filled syringes attach directly to any endoscopic injection needle's luer-lock connection.



Cost Effective

Multiple Syringe Sizes

- EverLift is offered in a 5 mL and 10 mL syringe.
- With a 5 mL syringe you can use only what you need without throwing out what you paid for.
- EverLift is reimbursable. Visit our reimbursement guide at laborie.com.



First submucosal
lifting agent
to be offered in
both a 5 mL and
10 mL syringe.



Laborie's 2021 Post-Market Clinical Follow-Up study of its 5 mL and 10 mL syringes validated that EverLift Submucosal Lifting Agent does not produce artifacts. The study also confirmed that the EverLift 5 mL pre-filled syringes offer waste-reduction and cost-savings opportunities.¹

Laborie continues to expand its submucosal injection offering with innovative and affordable devices.

ORDER NO.	DESCRIPTION	QUANTITY
GIS-55	EverLift® Submucosal Lifting Agent 5 mL	10/Box
GIS-59	EverLift® Submucosal Lifting Agent 10 mL	10/Box



Why choose EverLift?

“This is an effective lifting agent for endoscopic resection that is offered in convenient and cost-effective packaging.”



Dr. Douglas Rex
Director of Endoscopy,
Indiana University Hospital,
Indianapolis

1. EverLift Post-Market Clinical Follow-Up Whitepaper. Doc.: 105988 Rev: 04

EverLift and Spot are registered trademarks of GI Supply, Inc. © 2025 Laborie Medical Technologies Corp. All Rights Reserved.

Laborie¹

USA

T +1 800 522 6743

E gis-gisupplyinfo@laborie.com
W laborie.com



Learn more

MKT-00925 [A]